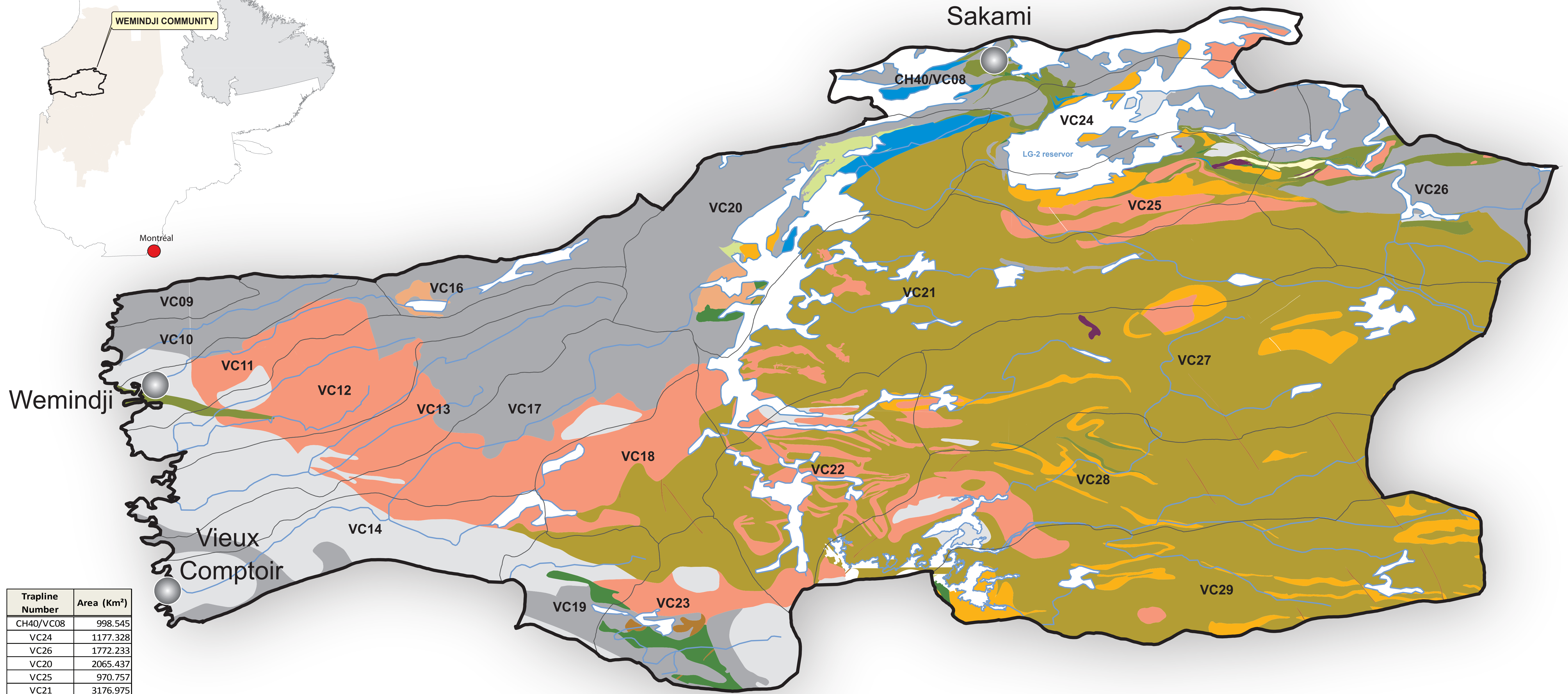


# COMMUNITY OF WEMINDJI

## TRAPLINES & GEOLOGY



Trapline Number	Area (Km <sup>2</sup> )
CH40/VC08	998.545
VC24	1177.328
VC26	1772.233
VC20	2065.437
VC25	970.757
VC21	3176.975
VC16	515.647
VC27	3259.855
VC12	1196.714
VC10	468.587
VC09	202.530
VC11	593.665
VC13	1435.147
VC17	1548.591
VC22	1515.363
VC18	941.952
VC28	2443.336
VC14	1203.929
VC29	2658.943
VC23	1099.885
VC19	574.468

- Quaternary**
- Sand, esker, moraine, silt, argillite, varve
- Proterozoic**
- Dyke, Gabbro
  - Siltstone
  - Conglomerate
  - Carbonated Rock
  - Diorite
  - Monzonite
  - Gneiss
  - Migmatite
  - Paragneiss
  - Anorthosite
  - Felsic Volcanic Rock
  - Intermediary Volcanic Rock
  - Mafic Volcanic Rock
  - Amphibolite
  - Ultramafic Rock
- Archean**
- Granite
  - Granodiorite
  - Tonalite
  - Pegmatite
  - Fault

### CREE NATION OF WEMINDJI

Tel.: (819) 978-0264  
 200, Hill Top, Wemindji  
 Qc, H3C 2M2



Contact:  
 Chief Geologist: M. Youcef Larbi  
 (819) 978-0264 ext. 327