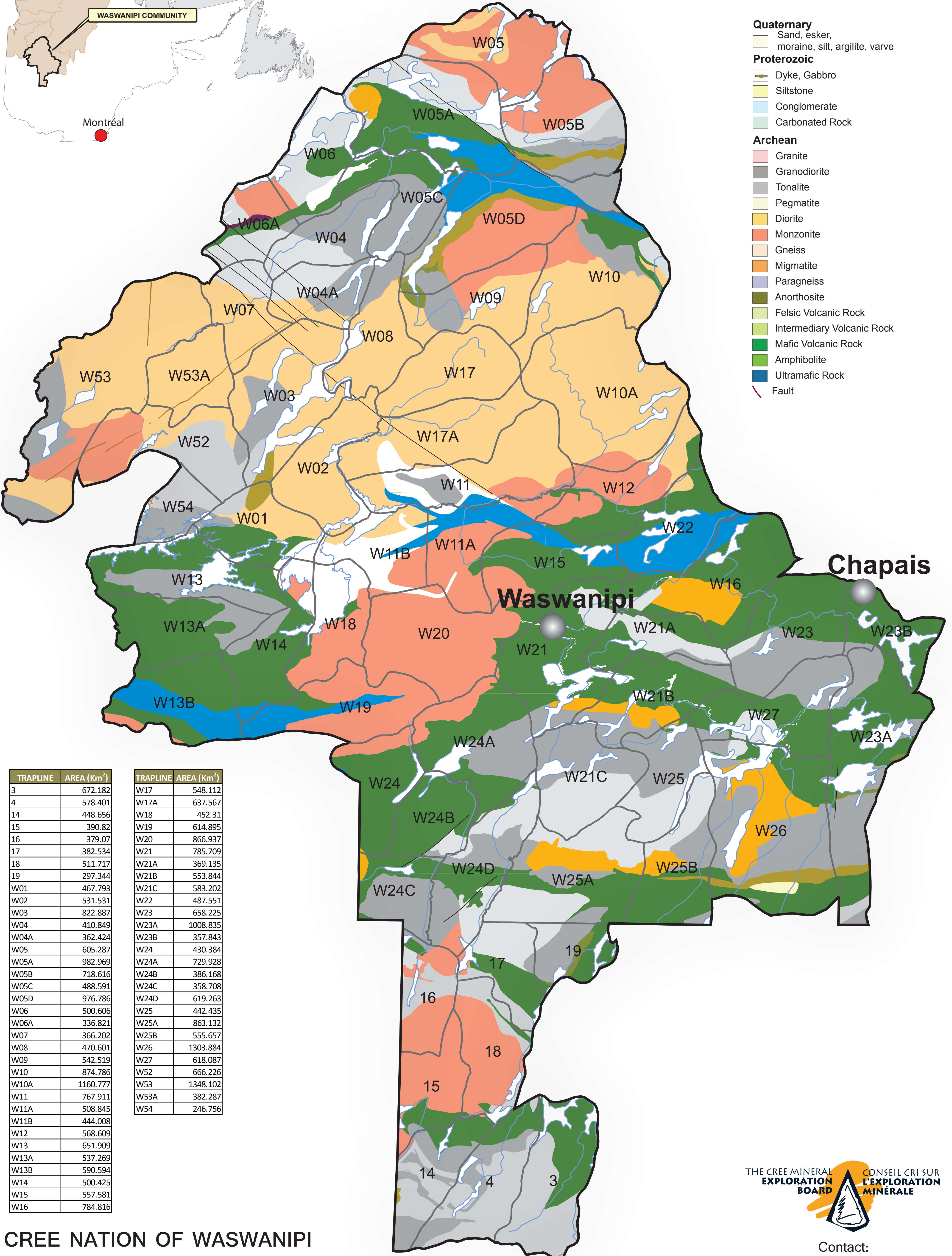
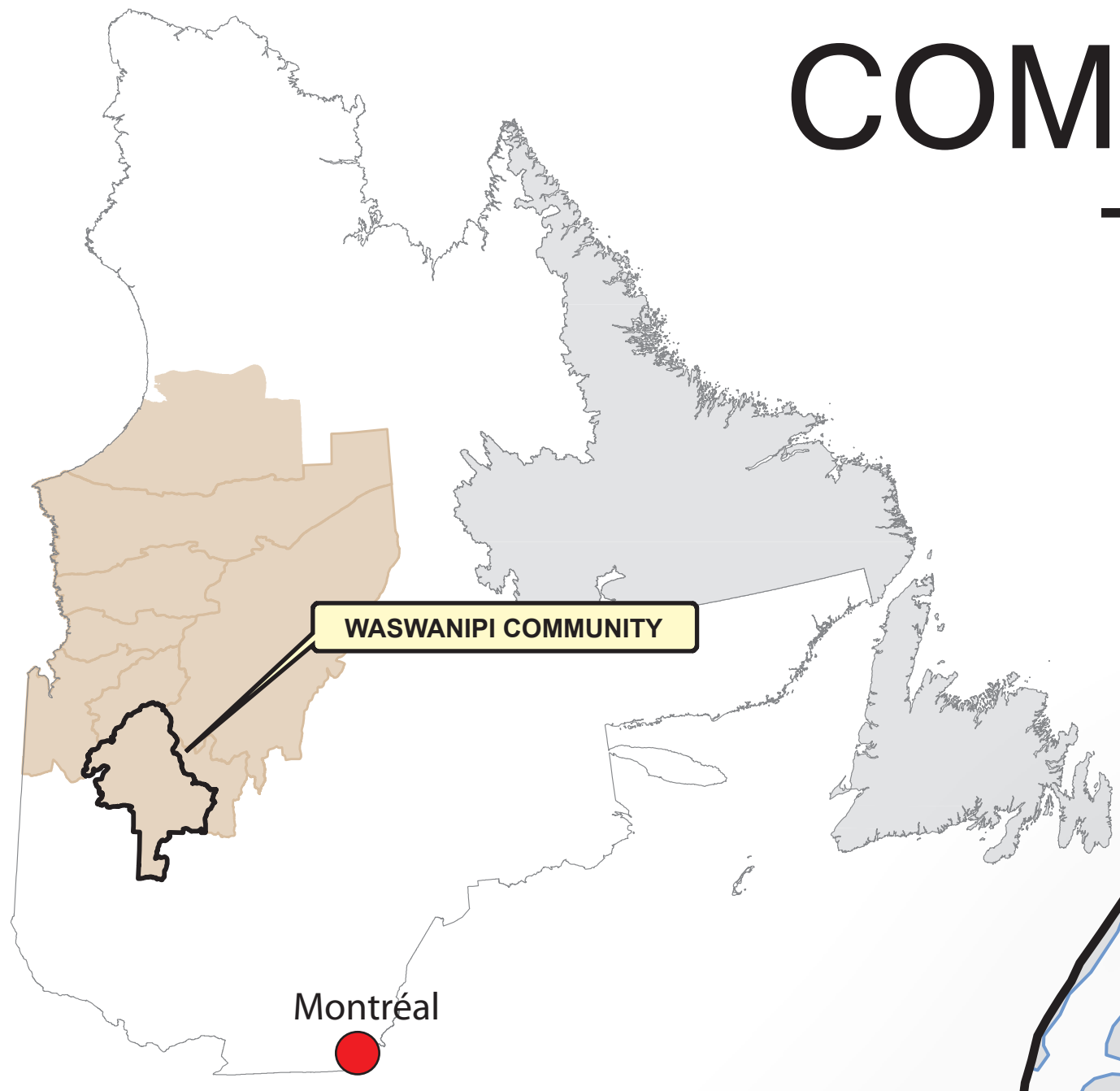


# COMMUNITY OF WASWANIFI TRAPLINES & GEOLOGY



- Quaternary**
  - Sand, esker, moraine, silt, argilite, varve
- Proterozoic**
  - Dyke, Gabbro
  - Siltstone
  - Conglomerate
  - Carbonated Rock
- Archean**
  - Granite
  - Granodiorite
  - Tonalite
  - Pegmatite
  - Diorite
  - Monzonite
  - Gneiss
  - Migmatite
  - Paragneiss
  - Anorthosite
  - Felsic Volcanic Rock
  - Intermediary Volcanic Rock
  - Mafic Volcanic Rock
  - Amphibolite
  - Ultramafic Rock
  - Fault

TRAPLINE	AREA (Km <sup>2</sup> )
3	672.182
4	578.401
14	448.656
15	390.82
16	379.07
17	382.534
18	511.717
19	297.344
W01	467.793
W02	531.531
W03	822.887
W04	410.849
W04A	362.424
W05	605.287
W05A	982.969
W05B	718.616
W05C	488.591
W05D	976.786
W06	500.606
W06A	336.821
W07	366.202
W08	470.601
W09	542.519
W10	874.786
W10A	1160.777
W11	767.911
W11A	508.845
W11B	444.008
W12	568.609
W13	651.909
W13A	537.269
W13B	590.594
W14	500.425
W15	557.581
W16	784.816

TRAPLINE	AREA (Km <sup>2</sup> )
W17	548.112
W17A	637.567
W18	452.31
W19	614.895
W20	866.937
W21	785.709
W21A	369.135
W21B	553.844
W21C	583.202
W22	487.551
W23	658.225
W23A	1008.835
W23B	357.843
W24	430.384
W24A	729.928
W24B	386.168
W24C	358.708
W24D	619.263
W25	442.435
W25A	863.132
W25B	555.657
W26	1303.884
W27	618.087
W52	666.226
W53	1348.102
W53A	382.287
W54	246.756

**CREE NATION OF WASWANIFI**  
 Tel.: (819) 753-2587  
 1, Chief Louis R. Gull Street, Waswanipi, Qc, JOY 3C0



Contact:  
 Chief Geologist: M. Youcef Larbi  
 (819) 978-0264 ext. 327