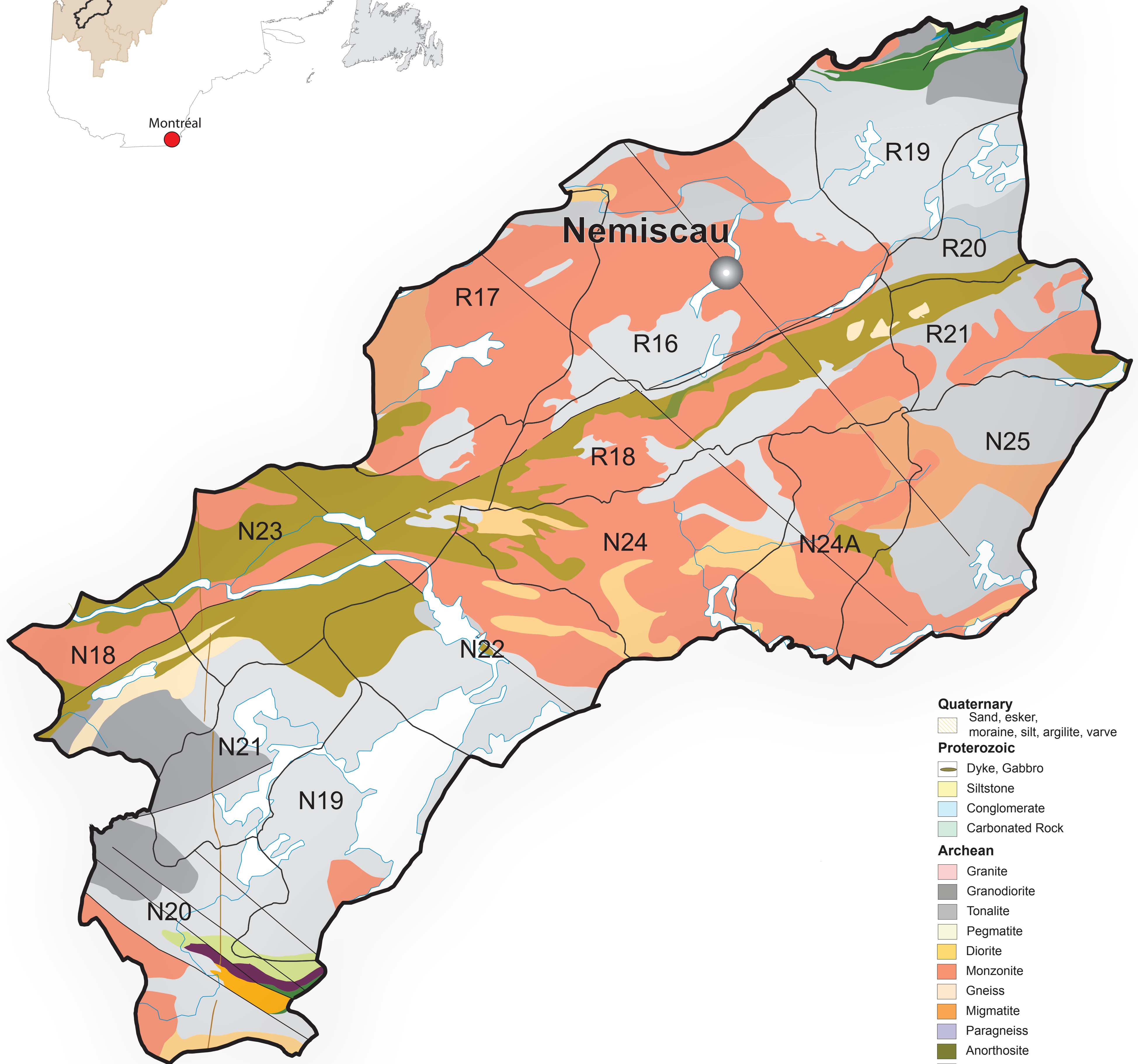
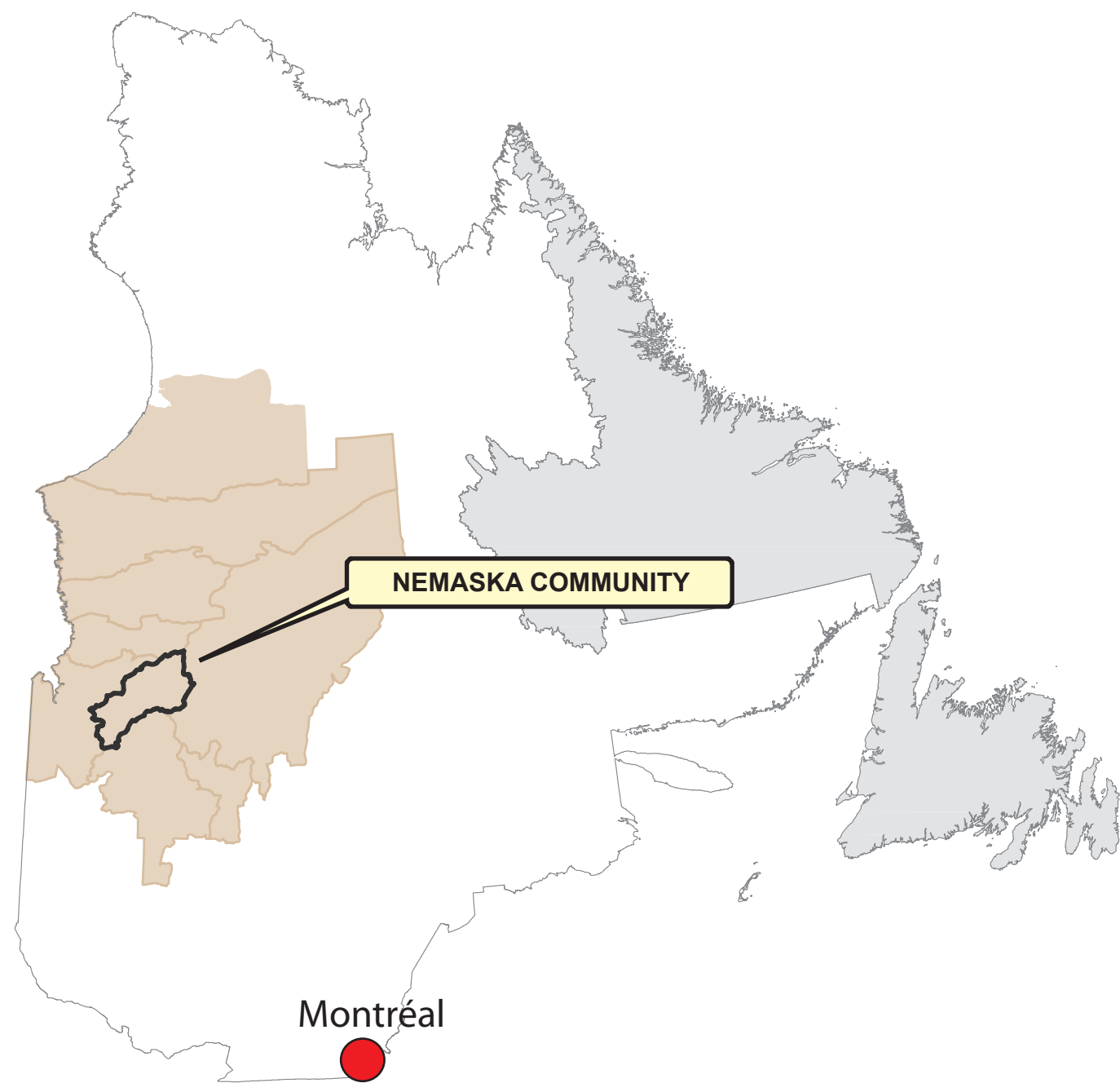


# COMMUNITY OF NEMASKA TRAPLINES & GEOLOGY



- Quaternary**
- Sand, esker, moraine, silt, argillite, varve
- Proterozoic**
- Dyke, Gabbro
  - Siltstone
  - Conglomerate
  - Carbonated Rock
- Archean**
- Granite
  - Granodiorite
  - Tonalite
  - Pegmatite
  - Diorite
  - Monzonite
  - Gneiss
  - Migmatite
  - Paragneiss
  - Anorthosite
  - Felsic Volcanic Rock
  - Intermediary Volcanic Rock
  - Mafic Volcanic Rock
  - Amphibolite
  - Ultramafic Rock
  - Fault

TRAPLINE	AREA (Km <sup>2</sup> )
R19	941.27
R16	1755.44
R20	423.96
R17	1095.21
N18	679.67
N19	920.95
R18	1167.92
N20	1019.89
N23	1369.58
N25	1200.58
N21	676.02
N22	1129.49
R21	654.27
N24	1154.09
N24A	741.56



**CREE NATION OF NEMASKA**

Tel.: (819) 673-2512  
32, Machishteweyaaou Street  
Nemaska, Qc, JOY 3B0



Contact:  
Chief Geologist: M. Youcef Larbi  
(819) 978-0264 ext. 327