



EEYOU ISTCHEE MINERAL EXPLORATION ACTIVITIES 2009



Spodumen-Lithium (Km 381 James Bay Highway)

Cree Mineral Exploration Board 2009

Marlene MacKinnon

Youcef Larbi

Jack R. Blacksmith



TABLE OF CONTENTS

1. OVERVIEW.....	3
1.1. History of Mineral Exploration in James Bay (Eeyou Istchee).....	3
1.2. Geology of the James Bay Area.....	3
1.3. Highlights for 2009.....	5
Map- geology, mineral resources and trapelines of each community -(CMEB, 2004)	8
2. OBJECTIVES.....	9
2.1. Objectives of CMEB.....	9
2.2. Objectives of this report.....	9
3. CREE NATIONS OF WEMINDJI, EASTMAIN and CHISASIBI	11
3.1. Geology and mineral resources potential.....	11
3.2. Mineral Exploration Activity (Wemindji).....	14
3.3	Mineral Exploration Activity (Eastmain)
19	
3.4	Mineral Exploration Activity (Chisasibi)
22	
4. CREE NATION OF MISTISSINI	27
4.1. Geology and mineral resources potential.....	27
4.2. Mineral Exploration Activity – Mistissini area (North – Otish Mountains, West – Troilus).....	30
5. WASWANAPI FIRST NATION	39
5.1. Geology and mineral resources potential.....	39
5.2. Mineral Exploration Activity (Waswanipi).....	40
6. CREE NATION OF OUJE-BOUGOUMOU.....	50
6.1. Geology and mineral resources potential.....	50
6.2. Mineral Exploration Activity (Ouje-Bougoumou)	51
7. CREE NATION OF NEMASKA.....	57
7.1 Geology and mineral resources potential.....	57
7.2. Mineral Exploration Activity (Nemaska)	58
8. CREE NATION OF WASKAGANISH	60
8.1. Geology and mineral resources potential.....	60
8.2. Mineral Exploration Activity (Waskaganish)	61
9. WHAPMAGOOSTUI FIRST NATION	64
9.1. Geology and mineral resources potential.....	64
9.2. Mineral Exploration Activity (Whapmagoostui).....	65
10. COMPILATION OF COMPANIES IN EEYOU ISTCHEE	67
11. REFERENCES	76
ANNEX 1. ABBREVIATIONS USED IN THIS REPORT	78



1. OVERVIEW

1.1. History of Mineral Exploration in James Bay (Eeyou Istchee)

Mineral exploration in Eeyou Istchee has been the preoccupation (and occupation) of prospectors and mining companies for more than a century. The richness of the territory in terms of precious and base metals and recently in diamonds continues to augment yearly.

Historically, exploration has been mostly for precious and base metals, uranium and iron. Exploration intensity has always been influenced by the economic value of the minerals targeted. The Goldcorp Inc. Roberto mineralized system in the Opinaca Reservoir area (Wemindji-Eastmain section) has evolved as one of the most significant gold discoveries in Québec in recent years. The continuously positive exploration results obtained from this site prompt other companies to claim in the area.

Eeyou Istchee is gaining prominence as one of Canada's most important areas for mineral exploration. The Opinaca Reservoir has potential for being a major gold mining camp. The Otish Mountains area is very promising for possible diamond, uranium and molybdenum exploitation.

These diamond, gold and uranium discoveries especially, as well as results of other exploration work, place Eeyou Istchee at the forefront of mineral exploration and eventual exploitation in northern Quebec.

1.2. Geology of the James Bay Area

The James Bay region overlies four geological subprovinces in the central part of the Superior Province. These subprovinces are, from north to south:

- The La Grande Subprovince
- The Opinaca Subprovince
- The Nemiscau Subprovince
- The Opatica Subprovince

These subprovinces (on which the communities of Chisasibi, Wemindji, Eastmain, Waskaganish and Nemaska are located) are mostly made up of volcano-plutonic and sedimentary assemblages intruded by granitoids. They are transected by E-W to WNW-



ESE– and NE-SW-trending shear zones metamorphosed to (in the centre) the greenschist facies and (near their borders) to the upper amphibolite facies (Hocq, M., 1994).

The La Grande Subprovince is made up primarily of volcano-plutonic rocks and includes the La Grande Volcano-sedimentary Belt (LGVB). The LGVB runs parallel to the Wemindji-Caniapiscau structural corridor. It consists of mafic to felsic volcanic rocks, interstratified with metasediments and oxide-facies or magnetite iron formations and hosts numerous known mineral occurrences. Scattered throughout the area are komatiitic flows and ultramafic intrusions which locally host Ni-Cu±PGE and Cr mineralization.

The Abitibi Subprovince (on which the communities of Ouje-Bougoumou and Waswanipi are located) is among the richest Archean greenstone belts in the world. It contains numerous granitoid intrusions and volcanic and sedimentary belts oriented roughly E-W dated between 2.75 and 2.67 Ga (Doucet *et al*, 2003). Volcanic units consist of ultramafic to mafic, mafic, or mafic to felsic assemblages. The volcanic assemblages are separated by narrow bands of sedimentary rocks generally composed of clastic units. Several E-W to NW-SE oriented major reverse or normal faults, NE-trending sinistral faults and SE-trending dextral faults transect the Abitibi Belt.

The Bienville Subprovince (on which the community of Whapmagoostui is located) is a plutonic assemblage occupying the southern part of the northern Superior province. It is composed mainly of migmatized orthogenesis ranging from tonalitic to granodioritic in composition, with enclaves of supracrustal (iron formation, paragneiss, metavolcanic rock) and plutonic (ultramafic) rocks intruded by synkinematic granodioritic to tonalitic plutons and by late biotite granites (Perreault and Moorehead, 2003). This subprovince also contains volcano-sedimentary belts, such as the Lac Fagnant Belt, metamorphosed to the amphibolite facies (Perreault and Moorehead, 2003).

In the James Bay region, strong positive magnetic anomalies are generally associated with iron formations (Houle, 2003). In these formations, disseminated sulphides may be detected from electromagnetic or induced polarization anomalies. In geochemistry, particularly in humus surveys, the most useful indicator elements for this type of mineralization are gold and arsenic (Houle, 2003). Houle states that fold hinges and transverse or longitudinal deformation zones affecting these iron formations are favourable sites for gold remobilization and local enrichment. Consequently, all iron formations located along the contact between major lithostratigraphic domains (sedimentary-volcanic) remain prime targets for the discovery of high-grade gold deposits.

1.3. Highlights for 2009

Exploration activities in 2008 show exciting finds and significant increases in potential for diamond, gold, uranium, molybdenum and the platinum group elements on Eeyou Istchee. Some exploration projects have progressed in advanced stages of exploration.

The beginning of commercial production at one mine and the closure of two mines on Eeyou Istchee reflect the economies of 2008.

DIAMONDS:

- **STORNOWAY DIAMOND CORP.** and **SOQUEM INC.** completed a preliminary study on the **RENARD** diamond project and a drilling program on their joint venture **FOXTROT** property on Mistissini Traplines.

GOLD:

- 5.0 g/t Au on the **BEAUFIELD RESOURCES INC.** **OPINACA** property ON Wemindji Traplines;
- 52 g/t Au and 20.98 g/t Au on the **VIRGINIA MINES INC.** **POSTE LEMOYNE** property on Wemindji Traplines;
- 10.8 g/t Au on the **AZIMUT RESOURCES - EASTMAIN RESOURCES - OPINACA MINES JV** **ELEONORE SOUTH** property on the Eastmain Traplines and on Waskaganish Traplines;
- 3.8 g/t Au on the **SIRIOS RESOURCES INC.** **KUKAMES** property on the Eastmain Traplines;
- Anomalous Au detected along 6 km on the **EASTMAIN RESOURCES INC.** **EASTMAIN MINE** property on Mistissini Traplines;
- 5.2 g/t Au on the **HINTERLAND METALS INC.** **LOCKOUT** property on the Waswanipi Traplines;
- 10.40 g/t Au on the **MURGOR RESOURCES INC.** **FANCAMP** property on Waswanipi Traplines;
- 28.06 g/t Au on the **MURGOR RESOURCES INC.** **NELLIGAN** property on Waswanipi Traplines;
- 10.3 g/t Au, 2.62% Cu, 14 g/t Ag on the **NORTHERN SUPERIOR RESOURCES INC. – MATAMEC EXPLORATION INC.** **WACHIGABAU** property on Waswanipi Traplines;
- 7.94 g/t Au on the **CARTIER RESOURCES INC.** **DOLLIER** property on Ouje-Bougoumou Traplines;
- 3.6 million tonne inferred resources grading 1.1% Cu, 5.2% Zn, 0.3 g/t Au and 36 g/t Ag on the **COGITORE RESOURCES INC.** **SCOTT LAKE** property on Ouje-Bougoumou Traplines;



- 6.56 g/t Au on the **TAWSHO MINING INC.** CHEVRIER property on Ouje-Bougoumou Traplines;
- 30.2 g/t Au on the **ARIANNE RESOURCES INC.** OPINACA property on Waskaganish Traplines;
- 22.97 g/t Au on the **VIRGINIA MINES INC.** ANATACAU-WABAMISK property on Waskaganish Traplines;

LITHIUM

- 1.8% Li₂O on the **LITHIUM ONE INC.** JAMES BAY LITHIUM property on Eastmain Traplines;
- 4.4%Li₂O on the **ARIANNE RESOURCES INC.** KOMO property on Waskaganish Traplines;
- 2.15% Li₂O on the **DIOS EXPLORATION INC.** PONTAX-LITHIUM property on Waskaganish Traplines.

PLATINUM GROUP ELEMENTS:

- 1.46 g/t PGE on the **HINTERLAND METALS INC.** PLATEAU-EBAY project on Waswanipi Traplines.

COPPER, SILVER, ZINC, LEAD, NICKEL CHROMIUM and MOLYBDENUM:

- 35.1% Cr₂O₃ on the **PRO OR MINING RESOURCES INC.** MENARIK property on Chisasibi Traplines;
- 8.8 million tonnes at 0.88% Cu indicated resources and 7.8 million tonnes at 0.87% Cu inferred resources on the **SOUTHAMPTON VENTURES INC.** HORDEN LAKE property on Nemaska Traplines and Waskaganish Traplines;
- 40% Cu on the **AZIMUT EXPLORATION INC. – ABITEX RESOURCES INC.** SOUTH BIENVILLE property on Whapmagoostui Traplines;
- 14 g/t Ag, 0.45% Pb on the **DIOS EXPLORATION INC.** HOTISH property on Mistissini Traplines.

IRON:

- 28.8% Fe on the **AUGYVA MINING RESOURCES INC. - CANADIAN IRON ORE CORP.** joint venture DUNCAN property on Wemindji Traplines.

URANIUM:

- 0.617% U₃O₈ on the **DIOS EXPLORATION INC.** OPINACA NORD property on Wemindji Traplines;
- 0.787% U₃O₈, 0.1% Y, 1.5% Zr, 14 g/t Ag, 0.45% Pb on the **DIOS EXPLORATION INC.** HOTISH property on Mistissini Traplines;



- 0.13% U₃O₈ over 1.65 on the **GOLDEN VALLEY MINES INC. – LEXAM EXPLORATIONS INC.** OTISH URANIUM property on Mistissini Traplines;
- 0.13% U₃O₈ over 11.0m on the **MAJESCOR RESOURCES INC. – STRATECO RESOURCES INC.** LAC MISTASSINI property on Mistissini Traplines;
- **STRATECO RESOURCES INC.** completed an Environmental Impact Study of the MATOUSH uranium property; and increased indicated mineral resources to 436,000 tonnes grading 0.78% U₃O₈ containing 7.46 million pounds U₃O₈ on Mistissini Traplines;
- 0.67% U₃O₈ on the **AZIMUT EXPLORATION INC. – ABITEX RESOURCES INC.** SOUTH BIENVILLE property on Whapmagoostui Traplines;
- ≥0.008% U₃O₈ in 45 of 58 drill holes on the **BONAVENTURE ENTERPRISES INC.** K9 URANIUM CORRIDOR property on Whapmagoostui Traplines.

OTHER:

- Sphagnum peat moss on the **TOURBIERE BERGER LTD.** property on Waskaganish Traplines.

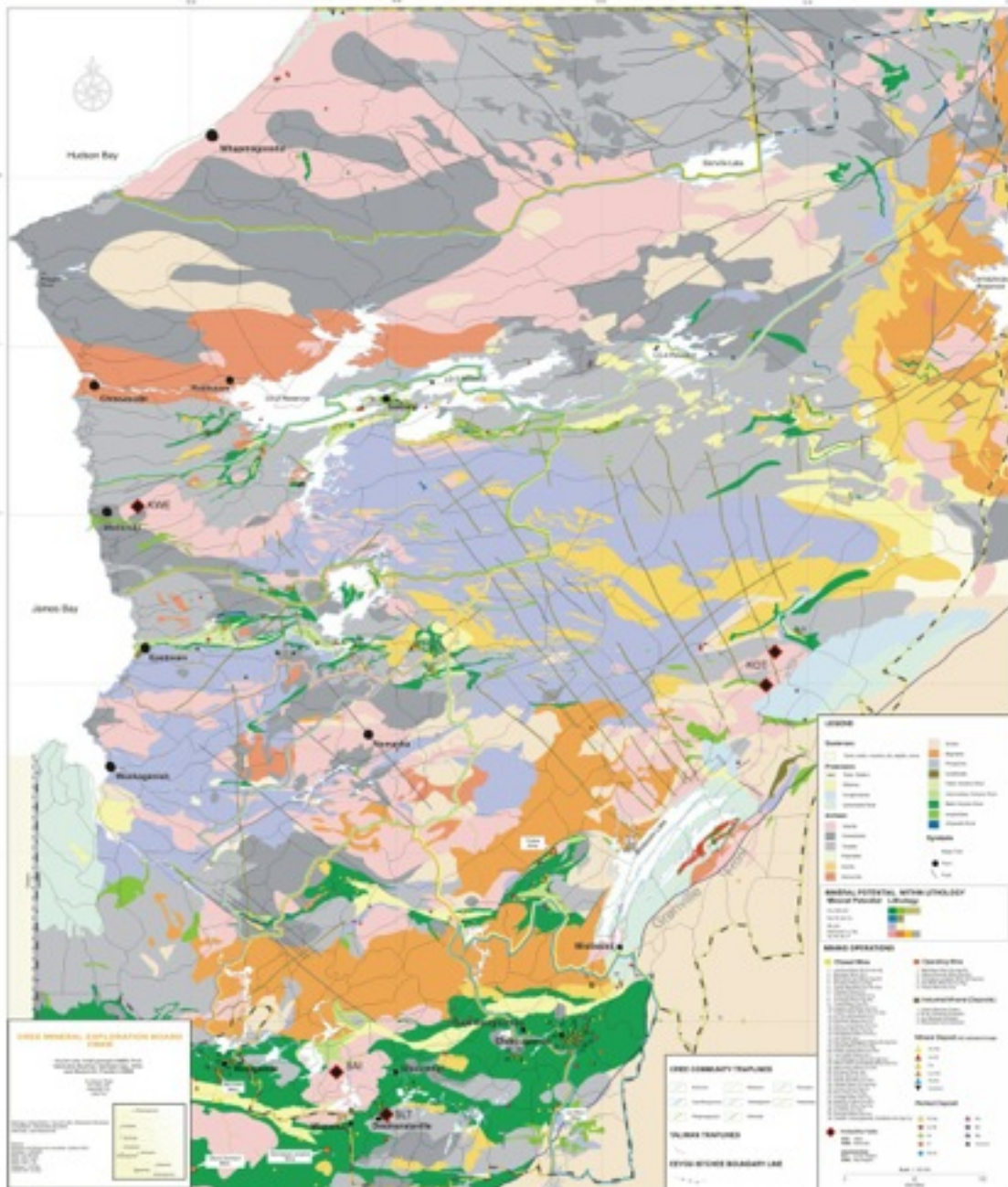
MINES:

- **METANOR RESOURCES INC.** began commercial production at the *BARRY PIT* on the BARRY GOLD DEPOSIT property on Waswanipi Traplines in 2008;
- **BREAKWATER RESOURCES LTD.** temporarily suspended operations at the LANGLOIS MINE on Waswanipi Traplines;
- **MSV RESOURCES 2007 INC.** and **CAMPBELL RESOURCES INC.** announced the closure of the COPPER RAND MINE for December 2008 on Ouje-Bougoumou Traplines.

EEYOU ISTCHEE GEO-ECONOMIC MAP
Carte Géo-Économique du Territoire Cri



Scale: 1 : 500 000



Map- geology, mineral resources and trapelines of each community -(CMEB, 2004)



2. OBJECTIVES

2.1. Objectives of CMEB

The objectives of the CMEB (Cree Mineral Exploration Board) are to:

- Provide the Cree the knowledge and the control of the mining activities In Eeyou Istchee,
- Provide information to individual prospectors and Cree junior mining companies,
- Promote industry interest in mining exploration in Eeyou Istchee in the context of sustainable development,
- Attract mining companies to the Eeyou Istchee territory.

2.2. Objectives of this report

The objectives of this report are to:

- Compile mineral exploration activity in Eeyou Istchee (James Bay) territory from January 2009 to November 2009,
- Update the activities of mining companies in Eeyou Istchee,
- Update the development of the mining industry in Eeyou Istchee,
- Outline the mineral potential of Eeyou Istchee.

The information in this report is compiled from information made public by mining companies through press releases and on their websites. *NI* indicates that no information was obtained. The CMEB will invite companies and prospectors to submit information on their projects on Eeyou Istchee for the 2010 exploration activity report thereby assisting us in producing a more complete and exact compilation.

The names of the mining companies are in bold, the property/project names are in capital letters and mineralized zones, target areas, showings and deposits are in italics.

For more detailed information, we invite the reader to consult the company websites for their press releases listed in Section 10 of this report.

The 2009 report compiles exploration information as per James Bay Cree community traplines. The report can thus serve as a tool for our readers in identifying the owners of active claims in the territory. The work of identifying and locating active claims on Cree traplines was done by Ms. Juliette Brien, CMEB Data Technician. Her work has allowed



the evolution of the new format for the CMEB Exploration Activity on Eeyou Istchee report.

3. CREE NATIONS OF WEMINDJI, EASTMAIN and CHISASIBI

3.1. Geology and mineral resources potential

The Wemindji area is known especially for the numerous granitic rocks produced by crustal thickening and fracturing resulting in conditions favourable to the intrusion of kimberlite. Locally, volcanic rocks are squeezed between tonalite and granites.

Wemindji is located in the La Grande Subprovince. According to Houle (2003), the La Grande Volcano-sedimentary Belt (LGVB) included in the La Grande Subprovince, hosts the vast majority of reported showings. The LGVB runs parallel to the Wemindji-Caniapiscau structural corridor (WCZ) and is composed mainly of mafic to felsic volcanic rocks, interstratified with metasediments and oxide-facies or magnetite iron formations. Komatiitic flows and ultramafic intrusions are also scattered throughout the area and locally host Ni-Cu±PGE and Cr occurrences. In the LGVB, exploration has focused on the search for deposits associated with gold-bearing iron formations, volcanogenic alteration zones (Cu-Zn-Ag-Au), quartz-sulphide veins (Cu-Zn-Au±Ag), and magmatic chrome and platinum group element mineralization (Houle, 2003).

The search for diamond-bearing kimberlites and lamprophyre dykes continues. The Wemindji kimberlite field consists of shallow dipping sills that intrude the Archean gneisses of the La Grande Sub-Province (Moorehead *et al.*, 2003). It is located near the eastern shore of James Bay, at the western end of the Wemindji-Caniapiscau structural zone (WCZ) extending 650 km ENE from James Bay to the Caniapiscau Reservoir. The WCZ contains small graben type basins infilled by 2.2 Ga siliciclastic sediments of the Sakami Formation and several Archean nepheline syenite intrusions. According to Moorehead, the kimberlite sills are located at the intersection of the WCZ with the NE extension of the Kapuskasing structural zone. The basement rocks belong to the Archean Superior craton with tonalites dated at 2.8 Ga.

The Eastmain area is known specially for the greenstone belt containing volcanic and sedimentary rocks suitable for gold, silver and copper mineralization.

The Eastmain area consists of the Lower Eastmain segment and the Middle Eastmain segment of the Lower Eastmain Greenstone Belt. The Lower Eastmain and middle Eastmain segments (as mapped by Moukhsil and Doucet, 1999; Moukhsil, 2000; Moukhsil *et al.*, 2001; Mouskhil and Legault, 2002) consist of Archean volcano-



sedimentary assemblages grouped into eight formations; the Anatacau-Pivert, Komo, Kaupatauch, Kasak, Wabamisk, Clarkie, Auclair and Natel formations. These rocks are cut by intrusions of monzonitic to monzogranitic and mafic to ultramafic compositions. The rocks are also crosscut by quartz-feldspar and/or feldspar porphyry (dioritic) dykes. ENE-WSW and E-W deformation zones transect the rocks (Mouskil and Legault, 2002). Archean volcano-sedimentary rocks of the Lower Eastmain Greenstone Belt are assigned to the Eastmain Group. This group is composed of komatiitic to rhyolitic volcanic rocks and a variety of sedimentary rocks. Paragneisses of the Auclair Formation (Nemiscau and Opinaca basins) overlie this assemblage.

Several Proterozoic diabase dykes of variable thickness (<30 m), oriented principally NW-SE, N-S, or NE-SW, traverse the area (Houle, 2003). These dykes are massive and magnetic, and locally contain plagioclase phenocrysts and traces of pyrite, and are assigned to the Mistassini (NW-SE), Matachewan (N-S), and Senneterre (NE-SW) dyke swarms based on their orientation and a few age determinations obtained elsewhere in the James Bay region (Houle, 2003).

In the Lower and Middle Eastmain segments, exploration was focused on lode gold or iron formation-hosted gold deposits and porphyry Cu-Au±Ag intrusions.

Wemindji Traplines:

Number of companies with active claims: 41 including 1 Cree company.

Number of prospectors with active claims: 27 including 1 Cree prospector.

Substances: gold (Au), copper (Cu), diamond (C), uranium (U), iron (Fe), nickel (Ni).

Highlights:

- 25.45 to 28.8 % Fe on the **AUGYVA MINING RESOURCES – CANADIAN CENTURY IRON ORE CORP.** joint venture DUNCAN property;
- 5.0 g/t Au on the **BEAUFIELD RESOURCES INC.** OPINACA property;
- 0.058% U₃O₈ on the **DIOS UGO** property;
- 0.617% U₃O₈ on the **DIOS OPINACA NORD** property;
- 52 g/t Au and 20.98 g/t Au on the **VIRGINIA MINES INC.** POSTE LEMOYNE property.

Eastmain Traplines:

Number of companies with active claims: 32 including 1 Cree company.

Number of prospectors: 14.



Substances: gold (Au), copper (Cu), silver (Ag), zinc (Zn), uranium (U), lithium (Li).

Highlights:

- 10.8 g/t Au on the **AZIMUT RESOURCES - EASTMAIN RESOURCES - OPINACA MINES JV ELEONORE SOUTH** property;
- 1.8% Li₂O on the **LITHIUM ONE INC. JAMES BAY LITHIUM** property;
- 3.8 g/t Au on the **SIRIOS RESOURCES INC. KUKAMES** property.

Chisasibi Traplines:

Number of companies with active claims: 28, including 1 Cree company.

Number of prospectors with active claims: 20 including 2 Cree prospectors.

Substances: gold (Au), silver (Ag), copper (Cu), chromium (Cr), molybdenum (Mo), uranium (U), nickel Ni), zinc (Zn), platinum group elements (PGE).

Highlights:

- 35.1% Cr₂O₃ on the **PRO OR MINING RESOURCES INC. MENARIK** property.

3.2. Mineral Exploration Activity (Wemindji)

TRAPLINE	COMPANIES/ PROSPECTORS	PROJECTS	SUBSTANCES	ACTIVITY FINDINGS
VC-6, VC-9	32477 YUKON INC.	<i>NI</i>	<i>NI</i>	<i>NI</i>
VC-6, VC-25	6256201 CANADA INC.	<i>NI</i>	<i>NI</i>	<i>NI</i>
VC-13	9034-4813 QUEBEC INC.	<i>NI</i>	<i>NI</i>	<i>NI</i>
VC-20, VC-24, VC-25	9176-0231 QUEBEC INC.	<i>NI</i>	<i>NI</i>	<i>NI</i>
VC-6, VC-20	9179-7258 QUEBEC INC.	<i>NI</i>	<i>NI</i>	<i>NI</i>
VC-20, VC-22	AMSECO EXPLORATION LTD.	<i>NI</i>	Ni	Acq 2008
VC-12, VC-13	ANTORO RESOURCES INC.	WAPISCAN-FIVE DIAMONDS	DIAMOND	<i>NI</i>
VC-6, VC-12, VC-13, VC-20	AUGYVA MINING RESOURCES JV CANADIAN CENTURY IRON ORE CORP.	DUNCAN	Fe	DRILLING (10,456) 25.45 to 28.8 % Fe
VC-14, VC-15, VC-17, VC-18, VC-19, VC-27, VC-28, VC-29	AZIMUT EXPLORATION INC JV EVERTON RESOURCES INC.	OPINACA A & B	Au	<i>NI</i>
VC-23, VC-28, VC-29	BEAUFIELD RESOURCES INC.	OPINACA	Au	Gp, Gc(sl), Gc(r) 5.0 g/t Au
VC-22, VC-28	C2C INC.	<i>NI</i>	<i>NI</i>	<i>NI</i>
VC-20	CRUSH TAL EXPLORATION INC.	<i>NI</i>	<i>NI</i>	<i>NI</i>
VC-13	DIAMOND FRANK EXPLORATION INC.	WAPISCAN	DIAMOND	Pg

VC-6, VC-12, VC-13, VC-18, VC-20, VC-24, VC-25	DIANOR RESOURCES INC. JV METALEX VENTURES LTD. & WEMINDJI EXPLORATION INC.	EKOMIAK PROPERTIES	DIAMOND	D(12:1,239)
VC-21, VC-25, VC-27, VC-28, VC-29	DIOS EXPLORATION INC. JV SIRIOS RESOURCES INC.	CHAT BRUN PAM U2 UGO UPINOR OPINACA NORD	U U U U Au, U	Pr, S (2008) 710 ppm U (2008) 0.058% U Pr, S, D(12:1,300) 0.534% U U ₃ 0.617% U
VC-6, VC-12, VC-19, VC-22, VC-23, VC-28	EASTMAIN RESOURCES INC.	ROAD KING DYNA AZIMUT C&D	Au Au Au	NI NI JV AZIMUT EXPLORATION INC. (2008)
VC-18, VC-20, VC-24, VC-25, VC-26	ELORO RESOURCES LTD.	MAGUY, MEECH SHOWINGS LEMOYNE NORTH, HORSESHOE, TAIGA, TAIGA WEST PROPERTIES	U Au Au Au, Cu	NI
VC-20, VC-21, VC-23, VC-25, VC-26, VC-27, VC-29	EVERTON RESOURCES INC.	See AZIMUT EXPLORATIO N INC. WILDCAT SARCELLE	Au	NI
VC-25	EXPLORATION MINIERE GRENVILLE INC.	NI	NI	NI
VC-23	GEONORDIC TECHNICAL SERVICES INC.	NI	NI	NI
VC-29	GESTION IAMGOLD QUE. INC.	NI	NI	NI
VC-29	GOLDEN VALLEY MINES LTD.	CHEECHOO See SIRIOS RESOURCES INC.	Au, Cu	NI

VC-20	MATAMEC EXPLORATION INC.	SAKAMI	U	NI
VC-20	MATAMEC EXPLORATION INC. 50% / VIRGINIA MINES INC. 50%	NI	NI	NI
VC-22, VC-28	MJL EXPLORATION INC.	NI	NI	NI
VC-20, VC-21	NOVA URANIUM CORP.	POM-POM	U	NI
VC-28	OPINACA MINES LTD.	ELEONORE	Au	PFS (2008)
VC-20, VC-21, VC-27	PRO OR RESOURCES INC.	EWART	Au, Cr, Ni	NI
VC-28	RIDGESTAKE RESOURCES INC.	NI	NI	NI
VC-20	SHERIDAN PLATINUM GROUP LTD.	NI	NI	NI
VC-28, VC-29	SIRIOS RESOURCES INC. / GOLDEN VALLEY MINES LTD.	CHEECHOO SHARKS	Au, Cu Au	S, IP, EM 3.76 g/t Au (2008) 8.4 g/t Au (2008)
VC-20	SODIMEX TRADING LTD.	NI	NI	NI
VC-12, VC-20	STRATECO RESOURCES INC.	APPLE	U	NI
VC-6, VC-12	THREEGOLD RESOURCES INC.	NI	NI	NI
VC-22, VC-28	TYPHOON EXPLORATION INC.	OPINACA	Au	NI
VC-6, VC-12, VC-13, VC-28	VANSTAR MINING INC.	PATICA	Au	Acq 2008
VC-18, VC-19, VC-20, VC21, VC-22, VC-24, VC-25, VC-26, VC-27, VC-28, VC-29	VIRGINIA MINES INC.	LAGRANDE SUD, POSTE LEMOYNE	Au Au	D(8:2,150) D(20:2,500) 52 g/t Au in grab samples 20.98 g/t Au over 2 metres channel sampling

VC-6	WEMINDJI EXPLORATION INC.	See DIANOR RESOURCES INC.	<i>NI</i>	<i>NI</i>
	PROSPECTORS			
VC-26	ANGERS, PIERRE			
VC-12, VC-13, VC-23, VC-28	BAMBIC, PETER			
VC-25	BANVILLE, ROBERT			
VC-17	BAWOLAK, MARIE-THERESE 50% / BAWOLAK, CHRISTELLE OLEINKA 50%			
VC-24	BAWOLAK, MARIE-THERESE 35% / BAWOLAK, CHRISTELLE OLEINKA 35% / HARVARD PHILIPPE 30%			
VC-24	BAWOLAK, EDWARD 70% / HARVARD, PHILIPPE 30%			
VC-12, VC-13	CHOQUETTE, BENJAMIN			
VC-25	DENTINGER, JEAN-CLAUDE			
VC-29	FRIGON, JACQUES			
VC-27, VC-29	GEORGEKISH, ELMER			
VC-24, VC-25, VC-26	GRIESBACH, GLENN 50% / SHEIKHOLESAMI, SALMASI KAMALEDDIN 50%			
VC-13	GROGORITA, AUREL			
VC-13, VC-20	HENDRIKSEN, GORDON N.			
VC-12, VC-13, VC-20	LAMOTHE, GILBERT			
VC-22, VC-23	LAVOIE, MICHEL G.			

VC-20	LEFEBVRE, LIONEL 20% / LEFEBVRE, CHRISTIAN 15% / TREMBLAY, JEAN- LOUIS 30% / GAUDREAULT, MARTIN 15%			
VC-6, VC-12, VC-13, VC-20	LEMELIN, YVES			
VC-20	MARCOTTE, LAURIN			
VC-20	O'CONNOR. TERRENCE P.			
VC-25	ROBERT, JEAN			
VC-37	RUZA, JAROSLAV (RIDGESTAKE RESOURCES INC.)			
VC-22, VC-23	TAYLOR, SEBASTIEN			

3.3 Mineral Exploration Activity (Eastmain)

TRAPLINE	COMPANIES/ PROSPECTORS	PROJECTS	SUBSTANCES	ACTIVITY FINDINGS
VC-35	48 NORTH CAPITAL	<i>NI</i>	<i>NI</i>	<i>NI</i>
VC-31, VC-32, VC-33	9177-3234 QUEBEC INC.	<i>NI</i>	<i>NI</i>	<i>NI</i>
RE-2	ARIANNE RESOURCES INC.	See Waskaganish section	<i>NI</i>	<i>NI</i>
VC-30, VC-32, VC-33	AUGYVA MINING RESOURCES INC.	KALI	Ag, Au, Cu, Mo	<i>NI</i>
RE-3, VC-14, VC-15, VC-36, VC-37	AZIMUT RESOURCES INC. / GOLDCORP INC.	WABAMISK	Au	D(=:2,800)
VC-34, VC-35	AZIMUT RESOURCES INC. 33.33% / EASTMAIN RESOURCES INC 33.33% / OPINACA MINES LTD 33.34%	OPINACA (ELEONORE SOUTH)	Au	D(=:3,500) 10.8 g/t Au over 0.5m
VC-34, VC-35	BEAUFIELD RESOURCES INC.	<i>NI</i>	<i>NI</i>	<i>NI</i>
VC-37	C2C INC.	<i>NI</i>	<i>NI</i>	<i>NI</i>
RE-2	DE BEERS CANADA INC.	<i>NI</i>	DIAMOND	<i>NI</i>
VC-33	DIANOR RESOURCES INC.	EKOMIAK VI	<i>NI</i>	<i>NI</i>
RE-2, VC-32, VC-33, VC-35	EASTMAIN RESOURCES INC.	LAC ELMER LINDGE RESERVOIR	Au Au Ag, Au, Cu	<i>NI</i>
VC-33, VC-35	ELORO RESOURCES LTD.	EASTMAIN 1, 2 & 3, DELTA	Ag, Au, Cu, Zn	D(14:3,100) (2008) 35.2% Ag, 10.15% Cu, 2.13% Zn
VC-33, VC-34, VC-35, VC-36, VC-37	EVERTON RESOURCES INC.	<i>NI</i>	<i>NI</i>	<i>NI</i>

VC-35	GEONORDIC TECHNIAL SERVICES INC.	<i>NI</i>	<i>NI</i>	<i>NI</i>
RE-2, VC-35, VC-36	GOLDEN VALLEY MINES LTD.	<i>NI</i>	<i>NI</i>	<i>NI</i>
RE-2	LITHIUM ONE INC.	JAMES BAY LITHIUM	Li	D 1.80% Li m
RE-3, RE-4, RE-5	MAJESCOR RESOURCES INC.	<i>NI</i>	<i>NI</i>	<i>NI</i>
VC-35	METANOR RESOURCES INC.	OPINACA	Au	<i>NI</i>
VC-34	MJL EXPLORATION INC.	<i>NI</i>	<i>NI</i>	<i>NI</i>
RE-2	NORDAIRE QUEBEC 2000 INC.	<i>NI</i>	<i>NI</i>	<i>NI</i>
VC-34	OPINACA MINES LTD.	<i>NI</i>	<i>NI</i>	<i>NI</i>
VC-36	PRO-OR RESOURCES INC.	<i>NI</i>	<i>NI</i>	<i>NI</i>
VC-35	RIDGESTAKE RESOURCES INC.	<i>NI</i>	<i>NI</i>	<i>NI</i>
RE-2	SDBJ 83.75% / CYR, JEAN 16.25%	<i>NI</i>	<i>NI</i>	<i>NI</i>
VC-34, VC-36	SIRIOS RESOURCES INC.	KUKAMES	Au	Pr, S 0.54 g/t TO 3.8 g/t Au
VC-33	SOQUEM INC.	<i>NI</i>	<i>NI</i>	<i>NI</i>
VC-35	STELMINE CANADA LTD.	<i>NI</i>	<i>NI</i>	<i>NI</i>
VC-33	TARREX MANAGEMENT	<i>NI</i>	<i>NI</i>	<i>NI</i>
VC-34	TYPHOON EXPLORATION INC.	<i>NI</i>	<i>NI</i>	<i>NI</i>
VC-35, VC-36	URANIUM BAY RESOURCES INC./URAGOLD BAY RESOURCES	USKAWANIS (UUP)	U	D(12:1,800) (2008) Intersections >100ppm eU
VC-37	VALE INCO LTD.	<i>NI</i>	<i>NI</i>	<i>NI</i>
VC-35, VC-37	VANTEX RESOURCES LTD.	OPINACA	Au	<i>NI</i>
RE-2, VC-30, VC-33, VC-34, VC-35, VC-36	VIRGINIA MINES INC.	ELEONORE REGIONAL, WABAMISK-ANATACAU	Au Au	<i>NI</i>

VC-34	WEMINDJI EXPLORATION INC.	<i>NI</i>	<i>NI</i>	<i>NI</i>
	PROSPECTORS			
RE-2	ARSENEAULT, JEAN-MARIE			
VC-34, VC-35, VC-36	BAMBIC, PETER			
VC-35	BARIBEAU, MARC			
VC-35	BAWOLAK, CHRISTELLE OLEINKA			
RE-4	DEKEYSER, MARC			
RE-2, VC-36	FRIGON, JACQUES			
RE-2, VC-33	GRIESBACH, GLENN 50% / SHEIKHOESLAMI, SALMASI KAMALEDDIN 50%			
VC-37	JONES, DAVID			
RE-2	LEMELIN, YVES			
VC-35	O'HALLORAN, DARRELL			
RE-2	ROBERT, JEAN			
VC-37	RUZA, JAROSLAV (RIDGESTAKE RESOURCES INC.)			

3.4 Mineral Exploration Activity (Chisasibi)

TRAPLINE	COMPANIES/ PROSPECTORS	PROJECTS	SUBSTANCES	ACTIVITY FINDINGS
FG/ CH-36	32477 YUKON INC.	<i>NI</i>	<i>NI</i>	<i>NI</i>
FG/ CH-30, FG/ CH-38	6588182 CANADA INC.	<i>NI</i>	<i>NI</i>	<i>NI</i>
FG/ CH-40	9176-0231 QUEBEC INC.	<i>NI</i>	<i>NI</i>	<i>NI</i>
FG/ CH-13, FG/ CH-40	ARIANNE RESOURCES INC.	<i>NI</i>	<i>NI</i>	<i>NI</i>
FG/ CH-36, FG/ CH-37, FG/ CH-38	AUGYVA MINING RESOURCES	YASINSKI	Au, AG, Cr, Cu, PGE, U, Zn	<i>NI</i>
FG/ CH-30	AZIMUT EXPLORATION INC.	<i>NI</i>	<i>NI</i>	<i>NI</i>
FG/ CH-15, FG/ CH-16, FG/ CH-17, FG/ CH-24	BEARCLAW CAPITAL CORP.	JAMES BAY	U	AGp, Ge 1 to 1270 ppm U in grab samples; 4 samples > 600 ppm U (2008)
GW-5/ CH-12, FG/ CH-15	BONAVENTURE ENTERPRISES INC.			
FG/ CH-30, FG/ CH-31	BREAKWATER RESOURCES LTD. 50% / VIRGINIA MINES INC. 50%	COULON JV	Ag, Cu, Zn	11.54% Zn, 1.2% Cu, 98.92 g/t Ag (2008)
FG/ CH-26	COONES JENSE RESOURCES LTD.	<i>NI</i>	<i>NI</i>	<i>NI</i>

FG/CH-9, FG/ CH-10, FG/ CH-13, FG/ CH-14, FG/ CH-36, FG/ CH-37, FG/ CH-38, FG/ CH-40	DIANOR RESOURCES INC.	PEM	<i>NI</i>	<i>NI</i>
FG/CH-2, FG/ CH-39, FG/ CH-40	ELORO RESOURCES INC.	ZONE 90, ZEKOMIAKO NE 99, SUMMIT- GABBRE, SAKAMI EAST, GAVAL SHOWING	U Ag, Au, Co, Cu, Ni, PGE Ag, Cu U	<i>NI</i> Optioned to SHIELD GOLD INC.
FG/CH3?	EASTMAIN RESOURCES INC.	RADISSON	Au	<i>NI</i>
FG/CH-1, FG/CH-3, FG/ CH-13, FG/ CH-14, FG/ CH-16, FG/ CH-30, FG/ CH-34, FG/ CH-35, FG/ CH-36	EVERTON RESOURCES INC.	COULON, GOLDSTRAIT	Au Au	 Pr, G
FG/ CH-40	EXPLORATION METAUXDIC	<i>NI</i>	<i>NI</i>	<i>NI</i>
FG/ CH-26	JETON D'OR RESOURCES INC. 50% / SIRIOS RESOURCES INC 50%	<i>NI</i>	<i>NI</i>	<i>NI</i>
FG/ CH-21	MACDONALD MINES EXPLORATION LTD. 50% / VIRGINIA MINES INC. 50%	<i>NI</i>	<i>NI</i>	<i>NI</i>

FG-28	MIDLAND EXPLORATION INC. / QUEST URANIUM CORP.	SANNON-SEGAU	U	S (2008) 25.41% U
FG/ CH-13, FG/ CH-14, FG/ CH-21, FG/ CH-28, FG/ CH-36, FG/ CH-40	NORTHFIELD METALS	<i>NI</i>	<i>NI</i>	<i>NI</i>
FG/ CH-36, FG/ CH-38	PRO OR MINING RESOURCES INC.	MENARIK	Cr	14.8% Cr m with 35.1% Cr over 7.2 m
FG/ CH-21	SIRIOS RESOURCES INC.	TILLY AQUILON AQUILON EXTENSION	Cu, Mo	IP, EMD(9:1,160) (2008) 0.1% Cu, 0.05% Mo
FG/ CH-30	SODIMEX TRADING LTD.	<i>NI</i>	<i>NI</i>	<i>NI</i>
FG/ CH-26, FG/ CH-28	SOQUEM INC. 50% / SIRIOS RESOURCES INC. 50%			
FG/ CH-40	STARFIRE MINERALS INC.	LORDEAU	U	<i>NI</i>
FG/ CH-39	U MINING RESOURCES INC. now called UNIVERSAL MINING CORP.	<i>NI</i>	Au	<i>NI</i>
FG/ CH-13, FG/ CH-14	URANIUM BAY RESOURCES INC.	KAUSCHISKA CH (UUP)	U	D(12:1,800) Intersections >100ppm eU
FG/ CH-13	VANTEX RESOURCES LTD.	MANIC	U	VANTEX Sold property to VANSTAR MINING INC.

FG/ CH-16, FG/ CH-21, FG/ CH-30, FG/CH 31 FG/ CH-32, FG/ CH-36, FG/ CH-39, FG/ CH-40	VIRGINIA MINES INC.	GAYOT, COULON JV, FCI LA GRANDE NORD	Ni, PGE Ag, Cu, Zn Au Ag, Au, Cu, PGE	See BREAKWATER RESOURCES LTD.
FG/ CH-36, FG/ CH-37, FG/ CH-38	WEMINDJI EXPLORATION INC.	<i>NI</i>	<i>NI</i>	<i>NI</i>
FG/ CH-37	WEMINDJI EXPLORATION INC. 50% / SWALLOW, DAVID 50%	<i>NI</i>	<i>NI</i>	<i>NI</i>
FG/ CH-37	WEMINDJI EXPLORATION INC. 50%/ MINQUAKEN, STANLEY 50%	<i>NI</i>	<i>NI</i>	<i>NI</i>
	PROSPECTORS			
GW-5/ CH-12, FG/ CH-15, FG/ CH-30	BAMBIC, PETER			
FG/ CH-21, FG/ CH-28	BANVILLE, ALEXANDRE			

FG/ CH-13, FG/ CH-20, FG/ CH-21, FG/ CH-26, FG/ CH-28, FG/ CH-29, FG/ CH-40	BANVILLE, ROBERT			
FG/ CH-40	BAWOLAK, CHRISTELLE OLEINKA 70% / HARVARD, PHILIPPE 30%			
FG/ CH-21	BAWOLAK, EDWARD 70% / HARVARD, PHILIPPE 30%			
FG/ CH-28	BAWOLAK, MARIE-THERESE 50% / BAWOLAK, CHRISTELLE OLEINKA 50%			
FG/ CH-24	CHAMPAGNE, ALAIN			
FG/ CH-13	CHARBONNEAU, REMI			
FG/ CH-13, FG/ CH-14, FG/ CH-36, FG/ CH-38, FG/ CH-40	GRIESBACH, GLENN 50% / SHEIKHOESLAMI, SALMASI KAMALEDDIN 50%			
FG/CH-1, FG/CH-2, FG/ CH-24, FG/ CH-25, FG/ CH-27, FG/ CH-33	LAVALLEE, JEAN RAYMOND 50% / LAVALLEE, SEBASTIEN 50%			

FG/ CH-13, FG/ CH-21, FG/ CH-28	LEFEBVRE, MARC			
FG/ CH-21, FG/ CH-28	LEFEBVRE, MARC 50% / CLOUTIER, MARC-ANDRE 50%			
FG/ CH-35, FG/ CH-36, FG/ CH-37, FG/ CH-38	LEMELIN, YVES			
FG/ CH-30	NOEL, NORMAND			
FG/ CH-21, FG/ CH-28	POIRIER, JULIE			

4. CREE NATION OF MISTISSINI

4.1. *Geology and mineral resources potential*

The Archean Upper Eastmain volcano-sedimentary belt, known for its gold, base metal, and PGE potential, continues to attract considerable attention in terms of diamond exploration.

The Otish kimberlite field is located in the NE part of the Opatica and Opinaca Sub-Provinces, north and west of the Otish Basin. According to Moorhead *et al* (2003) the Beaver Lake pipe (Ditem Explorations Inc.) and the Renard cluster (Ashton Mining of Canada Inc./SOQUEM Inc.) are in the south end of the Mistassini-Lemoyne structural zone (MLZ), which extends from the Mistassini Basin 650 km ENE to the Labrador Trough.

Mistissini West



All of the 2008 exploration projects are in the Frotet-Troilus segment of the Frotet-Evans Volcano-sedimentary Belt (FEVB). The FEVB is located in the centre of the Opatoca Subprovince and consists primarily of tholeitic and calc-alkaline volcanic formations.

The FEVB is subdivided into 4 lithotectonic segments which are, from west to east:

- The Evans-Ouagama segment
- Storm-Evans segment
- Assinica segment
- Frotet-Troilus segment.

The Frotet-Troilus segment hosts a few massive sulphide deposits, among which the Tortigny deposit (490,000 tonnes at 2.2% Cu, 6.2% Zn, 0.24% Pb, 91 g/t Ag, and 0.3 g/t Au), as well as numerous porphyry Cu-Au-Ag deposits, such as the Troilus Mine held by **INMET Mining Corporation**.

Mistissini North

The Archean Upper Eastmain volcano-sedimentary greenstone belt, known for its gold, base metal, and PGE potential, continues to attract considerable attention in terms of diamond exploration. Diamond exploration projects were largely concentrated in the granitoids and paragneisses that border the Upper Eastmain Greenstone Belt (Otish Mountains area).

Unconformity-type of uranium deposits is found in the Athabasca Basin account for more than 30% of the global uranium production and 15% of global reserves. The uranium mineralization is epigenetic and occurs near the basal contact of sandstone overlying crystalline basement rocks. Uranium is not confined to the sandstone but may also be concentrated in fractured basement rocks below the unconformity. Mineralization is typically found within 200 m above and below the unconformity surface. The Matoush Uranium Discovery is closely linked to a regional fault that appears to have acted as a conduit for uranium-bearing fluids. The uranium mineralization found at Matoush lies well above the basin rim and resembles perched bodies found above the McArthur River and Cigar Lake uranium deposits in the Athabasca basin.

MISTISSINI TRAPLINES:

Number of companies with active claims: 64.

Number of prospectors with active claims: 43 including 2 Cree prospectors.

Substances: gold (Au), silver (Ag), copper (Cu), lead (Pb), zinc (Zn), molybdenum (Mo), uranium (U), diamond (C), platinum group elements (PGE).

Highlights:



- 0.787% U₃O₈, 0.1% Y, 1.5% Zr, 14 g/t Ag, 0.45% Pb on the **DIOS EXPLORATION INC. HOTISH** property;
- Anomalous Au detected along 6 km on the **EASTMAIN RESOURCES INC. EASTMAIN MINE** property;
- 0.13% U₃O₈ over 1.65 on the **GOLDEN VALLEY MINES INC. – LEXAM EXPLORATIONS INC. OTISH URANIUM** property;
- 0.13% U₃O₈ over 11.0m on the **MAJESCOR RESOURCES INC. – STRATECO RESOURCES INC. LAC MISTASSINI** property;
- **STORNOWAY DIAMOND CORP. and SOQUEM INC.** completed a preliminary study on the **RENARD** diamond project on their joint venture **FOXTROT** property and completed a drilling program;
- **STRATECO RESOURCES INC.** completed an Environmental Impact Study of the **MATOUSH** uranium property; and increased indicated mineral resources to 436,000 tonnes grading 0.78% U₃O₈ containing 7.46 million pounds U₃O₈.

4.2. Mineral Exploration Activity – Mistissini area (North – Otish Mountains, West – Troilus)

TRAPLINE	COMPANIES/ PROSPECTORS	PROJECTS	SUBSTANCES	ACTIVITY FINDINGS
M-28, M-29A	9155-1861 QUEBEC INC.	<i>NI</i>	<i>NI</i>	<i>NI</i>
M-56	AGNICO EAGLE MINES LTD.	BIG MAC, CHARLES	U	LC, AGp
M-17B	ALDERSHOT RESOURCES LTD.	<i>NI</i>	<i>NI</i>	<i>NI</i>
M-4	ALEXIS MINERALS CORP.	QUEOTISH	DIAMOND	<i>NI</i>
M-16	ANDREANE MINING RESOURCES INC.	<i>NI</i>		
M-8, M-10, M-13, M-14A, M-18	AZIMUT EXPLORATION INC.	SALOMON, BELLEFOND, RONSART GOOSE	Au	Acq
M-34, M-35A, M-39A, M-40, M-41, M-48	BEAUFIELD RESOURCES INC.	TORTIGNY- TROILUS	Ag, Au, Cu, Pb, Zn	D(8:3,411) 145.50 g/t Ag, 6.02% Cu, 15.00% Zn over 12.55 meters (2008)
M-14A	C2C INC.	EASTMAIN DAM	Au	<i>NI</i>
M-17C, M-24A, M-36	CAMECO CORP.	<i>NI</i>	U	<i>NI</i>
M-16	CINNABAR VENTURE INC.	<i>NI</i>	<i>NI</i>	<i>NI</i>
M-1A	COONES JENSE RESOURCES LTD	<i>NI</i>	<i>NI</i>	<i>NI</i>
	DIAMOND FRANK EXPLORATION INC.	K6	DIAMOND	<i>NI</i>
M-1A, M-16	DIANOR RESOURCES INC.	OTISH, QUEOTISH	DIAMOND	<i>NI</i>

M-8, M-9, M-10, M-11, M-16, M-23, M-24, M-24A, M-29A, M-36, M-46, M-50, M-51, M-51B, M-56	DIOS EXPLORATION INC.	HOTISH	U, REE, Ag, Pb	S 0.787% U 0.1% Y, 1.5% Zr, 14 g/ t Ag, 0.45% Pb
M-16, M-24A	DITEM EXPLORATION INC.	OTISH URANIUM, OTISH SOUTH	U	NI
M-24A	DITEM EXPLORATION INC. 50% / PURE GOLD MINERALS INC. 50%	NI	NI	NI
M-16	EASTMAIN RESOURCES INC.	EASTMAIN MINE	Au	Gc(r), Gc(s) Anomalous gold over 6 km
M-16, M-17A, M-23	EASTMAIN RESOURCES INC.	RUBY HILL	Ag, Au, Cu, Ni, PGE	D
M-16, M-17, M-24A, M-25	ELORO RESOURCES INC.	OTISH NORTH, OTISH SOUTH RUPERT NORTH, RUPERT SOUTH	U U U Cu	JV NORTHFIELD MINERALS INC. NI NI
M-2, M-8, M-14A, M-14B, M-18, M-38, M-47	EVERTON RESOURCES INC.	COULON	Au	S
M-39, M-47A	EVERTON RESOURCES INC.	SIRMAC	Li	Acq
M-38	EXPLORATION INNOVATEURS DE QUE. INC 50% / BOSUM, SAMUEL 50%	NI	NI	NI

M-34	FALCONBRIDGE LTD. renamed XSTRATA CANADA CORP.	<i>NI</i>	<i>NI</i>	<i>NI</i>
M-16	GEONOVA EXPLORATION INC.	<i>NI</i>	<i>NI</i>	<i>NI</i>
M-1A, M-3, M-10, M-11	GESTION IAMGOLD QUE. INC.	<i>NI</i>	<i>NI</i>	<i>NI</i>
M-25, M-40	GOLDEN GOOSE RESOURCES INC.	TROILUS FREGOLD, TROILUS NORTH, TROILUS EAST	Au	<i>NI</i>
M-14, M-14A, M-16, M-17, M-17B, M-17C, M-18, M-23, M-24A, M-28, M-28A, M-29, M-29A	GOLDEN VALLEY MINES INC. / LEXAM EXPLORATIONS INC.	OTISH URANIUM	U	DRILLING 0.13% U 1.65m
M-34, M-39A, M-40	INMET MINING CORP.	TROILUS MINE	Ag, Au, Cu	Mine closure
M-18, M-25	INTERNATIONAL KIRKLAND MINERALS INC	RUPERT RIVER URANIUM	U	<i>NI</i>
M-16	JASPER VENTURE INC.	<i>NI</i>	<i>NI</i>	<i>NI</i>
M-16, M-17B, M-17C, M-29A	KODIAK EXPLORATION LTD.	UR, UR EAST, 308 EAST, 308 WEST, RIM 1, 2 & 3, MAT I, II & III	U	Optionne d properties to KIRRI RESOUR CES INC.
M-14, M-14A, M-18, M-19, M-25	LANDMARK MINERALS INC.	<i>NI</i>	<i>NI</i>	<i>NI</i>

M-39A, M-40	LANDOR RESOURCE INC.	LESSARD	Ag, Au, Cu, Zn	D(25:9,581)
M-41	LYON LAKE LTD. 50% / SOQUEM INC. 50%	<i>NI</i>	<i>NI</i>	<i>NI</i>
M-10, M-11, M-17, M-23, M-24, M-24A, M-28, M-29A	MAJESCOR RESOURCES INC. MAJESCOR RESOURCES INC. / STRATECO RESOURCES INC.	PORTAGE LAC LAPARRE LAC MISTASSINI	DIAMOND DIAMOND, U DIAMOND, U	<i>NI</i> <i>NI</i> 0.13% eU m
M-17B, M-56	MECANEX	<i>NI</i>	<i>NI</i>	<i>NI</i>
M-29A, M-36, M-56	MECANEX 50% / MARCOTTE, LAURIN 50%	<i>NI</i>	<i>NI</i>	<i>NI</i>
M-16, M-17A, M-17B, M-23, M-24A	MELKIOR RESOURCES INC.	OTISH	DIAMOND, U	<i>NI</i>
M-1A, M-2A, M-11, M-12, M-16	MIDLAND EXPLORATION INC.	LASALLE GALINEE	Au	<i>NI</i>
M-56	MUNDIREGINA RESOURCES CANADA INC.	<i>NI</i>	<i>NI</i>	<i>NI</i>
M-17, M-17B, M-17C, M-24, M-24A, M-28	NOVA URANIUM CORP.	OTISH BASIN	U	AGp, S 478ppm U (2008)
M-51	NOVAWEST RESOURCES INC. aka APELLA RESOURCES INC.	See APELLA RESOURCES INC.		
M-16, M-17, M-17B, M-17C, M-24, M-28, M-29, M-29A, M-36	OTISH ENERGY INC. / SANTOY RESOURCES INC.	OTISH SOUTH, LAC LAPARRE	U	Companied dissolved their joint venture agreements

M-16, M-17, M-17C, M-24, M-24A, M-28, M-29, M-29A	<p>PACIFIC BAY MINERALS LTD.</p> <p>PACIFIC BAY MINERALS LTD. / STRATECO RESOURCES INC.</p> <p>PACIFIC BAY MINERALS LTD. / STRATECO RESOURCES INC.</p> <p>PACIFIC BAY MINERALS LTD.</p>	<p>PAPASKWASA TI,</p> <p>OTISH URANIUM,</p> <p>RABBIT EARS</p> <p>SW OTISH, OTISH SOUTH</p>	<p>U</p> <p>U</p> <p>U</p> <p>U</p>	<p>D(7:2,022)</p> <p>D(#:1,498) intersects major fault structure</p> <p>JV with OTISH ENERGY INC.</p>
M-17B, M-24A, M-36	RIDGESTAKE RESOURCES INC.	<i>NI</i>	<i>NI</i>	<i>NI</i>
M-16, M-23	RUBY HILL EXPLORATION INC.	<i>NI</i>	<i>NI</i>	<i>NI</i>
M-19, M-33, M-34A, M-38, M-39A	SHERIDAN PLATINUM GROUP LTD.	<i>NI</i>	U	<i>NI</i>
M-1, M-1A, M-14A, M-14B	SIRIOS RESOURCES INC.	ESCALE	Au, Mo	S 0.13 g/t to 0.52 g/t Au 0.002% to 0.16% Mo
M-16	SOCIETE MINIERE ALTA INC.	<i>NI</i>	U	<i>NI</i>
M-2, M-3, M-8, M-17, M-38, M-39A, M-40, M-41, M-47	SOQUEM INC.	<i>NI</i>	<i>NI</i>	<i>NI</i>
M-40, M-41	SOQUEM INC. 50% / MDN INC. 50%	<i>NI</i>	Cu, Zn	<i>NI</i>
M-17, M-24A	STELLAR PACIFIC VENTURES INC.	OTISH PROPERTIES	U	<i>NI</i>
M-11, M-16, M-17, M-24A, M-29A	STORNOWAY DIAMOND CORP. 50% / SOQUEM INC. 50%	FOXTROT	DIAMOND	PRELIMINARY ASSESSMENT DRILLING

M-1A, M-2A, M-3, M-4, M-12, M-13	BANVILLE, ROBERT			
M-16, M-17B, M-17C, M-24A, M-40, M-41	BAWOLAK, CHRISTELLE OLEINKA			
M-24, M-28, M-29A	BAWOLAK, EDWARD			
M-17	BAWOLAK, EDWARD 50% / BAWOLACK, CHRISTELLE OLEINKA 50%			
M-1, M-24A	BAWOLAK, EDWARD 70% / HARVARD, PHILIPPE 30%			
M-56	BOUCHARD, HUGUETTE			
M-24A	CABIANCA, SCOTT			
	CHAMPAGNE, ALAIN			
M-16, M-24A	CHAN, LAILAI			
M-51A	DESGAGNE, LARRY 34% / FRIGON, BENOIT 33%, TREMBLAY, JEAN LOUIS 33%			
M-50	DESGAGNE, LARRY 50% / TREMBLAY, JEAN LOUIS 50%			
M-51B	DESGAGNE, LARRY 70% / TREMBLAY, JEAN LOUIS 30%			
M-38	DETINGER, JEAN-CLAUDE			
M-51	FRIGON, BENOIT 50%/ TREMBLAY, JEAN LOUIS 50%			
M-40, M-41	FRIGON, JACQUES			
M-40	FRIGON, JEAN PIER			
M-56	GAGNON, ROBERT			

M-38, M-56	GOSMAN, DAVID			
M-42B	GIRARD, ROSAIRE 50% / TREMBLAY, ALAIN 50%			
M-42	GIRARD, ROSAIRE			
M-42, M-42B	GIRARD, ROSAIRE 50% / BILODEAU, DANY 50%			
M-42B	GIRARD, ROSAIRE 50% / FILION, MICHEL 50%			
M-42B, M-46A	GIRARD, ROSAIRE 50% / JOLY, RAYMOND 50%			
M-46A	GIRARD, ROSAIRE 50% / MATHIEU, CARL 50%			
M-42, M-46A	GIRARD, ROSAIRE 50% / POULIOT ROBIN 50%			
M-16, M-17, M-17A	HANSEN, JENS (MELKIOR RESOURCES INC.)			
M-17	HANSEN, NATHALIE (MELKIOR RESOURCES INC.)			
M-14A, M-18, M-19	KEYSER, NORA			
M-16	LABRANCHE, STEVE			
M-16, M-24A	LACOURSIERE, MARY			
M-25	LAINE, ROGER			
M-16, M-24A	LAMBERT, BERTHE			
M-19, M-20, M-25, M-26, M-33	LAVALLEE, JEAN-RAYMOND			
M-2, M-3, M-19, M-25	LAVALLEE, JEAN-RAYMOND 50% / LAVALLEE, JEAN- SEBASTIEN 50%			
M-19, M-25, M-26, M-33	LAVALLEE, JEAN-SEBASTIEN			

M-17, M-24A	LAVOIE, MICHEL			
M-41	MA, MORADAK			
M-17B, M-17C, M-24, M-24A, M-25, M-56	MARCOTTE, LAURIN			
M-56	MCCORMICK, GLENN			
M-56	MCCORMICK, GLENN 50% / BOUCHARD, HUGUETTE 50%			
M-38, M-48	MESKINO, DEREK			
M-14A, M-18	OSLER, TIM			
M-17B	PROCYSHYN, EDWARD			
M-40	ROBERT, GERARD			
M-13, M-17B	YACOUB, FAYZ			

5. WASWANIPI FIRST NATION

5.1. *Geology and mineral resources potential*

The Desmaraisville kimberlite field is located in the Waswanipi-Saguenay structural zone (WSZ) oriented WNW at 286° in the central part of the Abitibi Sub-Province and is composed of five hypabyssal pipes (Moorehead *et al*, 1999) and numerous dykes dated at 1100 Ma. The Desmaraisville kimberlites are clustered in two sectors: the Le Tac Township sector hosting 3 pipes and numerous dykes near NE-trending diabase dykes assigned to the Preissac swarm (2167-2214 Ma), and the Ailly Township sector hosting 2 pipes and a few dykes near a major diabase dyke of the Abitibi swarm (1141 Ma) (Doucet *et al*, 2003). The dominant structural control for the Desmaraisville field appears to be the WNW-trending Waswanipi-Saguenay structural zone. According to Doucet et al (2003), NE-oriented faults and diabase dykes form second-order structural controls that determine the emplacement of individual pipes.

WASWANIPI TRAPLINES:

Number of companies with active claims: 83.

Number of prospectors with active claims: 68 including 1 Cree prospector.

Substances: gold (Au), silver (Ag), copper (Cu), nickel (Ni), cobalt (Co), zinc (Zn), iron (Fe), uranium (U), diamond, platinum group elements (PGE), aluminum (Al).

Highlights:

- 5.2 g/t Au on the **HINTERLAND METALS INC.** LOCKOUT property;
- 10.40 g/t Au on the **MURGOR RESOURCES INC.** FANCAMP property;
- 28.06 g/t Au on the **MURGOR RESOURCES INC.** NELLIGAN property;
- 10.3 g/t Au, 2.62% Cu, 14 g/t Ag on the **NORTHERN SUPERIOR RESOURCES INC.** – **MATAMEC EXPLORATION INC.** WACHIGABAU property.

5.2. Mineral Exploration Activity (Waswanipi)

TRAPLINE	COMPANIES/ PROSPECTORS	PROJECTS	SUBSTANCES	ACTIVITY FINDINGS
W-23, W-23B	2736-1179 QUEBEC INC.	<i>NI</i>	<i>NI</i>	<i>NI</i>
W-24, W-24A, W-24B	6256201 CANADA INC.	<i>NI</i>	<i>NI</i>	<i>NI</i>
W-5D, W-25A	6761976 CANADA INC.	<i>NI</i>	<i>NI</i>	<i>NI</i>
W-26	9093-6725 QUEBEC INC.	<i>NI</i>	<i>NI</i>	<i>NI</i>
W-14	9137-4793 QUEBEC INC.	<i>NI</i>	<i>NI</i>	<i>NI</i>
W-24B	9154-4312 QUEBEC INC.	<i>NI</i>	<i>NI</i>	<i>NI</i>
W-23	9170 4304 QUEBEC INC.	<i>NI</i>	<i>NI</i>	<i>NI</i>
W-25A	9176-0231 QUEBEC INC.	<i>NI</i>	<i>NI</i>	<i>NI</i>
W-22, W-25B, W-26	ABITEX RESOURCES INC.	<i>NI</i>	Au	<i>NI</i>
W-16, W-22, W-24A	ADVENTURE GOLD INC.	<i>NI</i>	Au	<i>NI</i>
W-23A, W-23B, W-27	AGNICO EAGLE MINES LTD.	<i>NI</i>	Au	<i>NI</i>
W-25B	ALTO VENTURES LTD.	ALCUDIA	Au	<i>NI</i>
W-25B	AMESECO RESOURCES LTD.		Au, Cu, Ni	<i>NI</i>
W-15	ANTORO RESOURCES INC.		DIAMOND	<i>NI</i>
W-13, W-13A, W-21, W-21A	APELLA RESOURCES INC. / PRIORITY URANIUM CORPORATION	FRONTLINE	U	TE
W-13B	AUROCK EXPLORATION INC.	<i>NI</i>	<i>NI</i>	<i>NI</i>
W-24A	BEARS MINING RESOURCES INC.	<i>NI</i>	<i>NI</i>	<i>NI</i>

W-5A, W-5C, W-6A, W-25A, W-25B	BEAUFIELD RESOURCES INC	URBAN-BARRY	Au	<i>NI</i>
W-20, W-21, W-21C, W-24A	BIG RED DIAMOND CORP.	<i>NI</i>	DIAMOND	<i>NI</i>
W-23B, W-24, W-24B	BREAKWATER RESOURCES LTD.	LANGLOIS MINE	Ag, Au, Cu, Zn	Temporary suspension of operations October 2008
W-24	BREAKWATER RESOURCES LTD. 75% / NEXTAIR INC. 25%	<i>NI</i>	<i>NI</i>	<i>NI</i>
W-23, W-24, W-24D	BULL'S EYE EXPLORATION	CHAPAIS	Au, Cu, Zn	<i>NI</i>
W-5D, W-9	CANADIAN ROYALTIES INC.	<i>NI</i>	<i>NI</i>	<i>NI</i>
W-22, W-24A, W-25A	CARAT EXPLORATION INC.	<i>NI</i>	<i>NI</i>	<i>NI</i>
W-23A, W-23B	CELTIC MINERALS LTD.	MUSCOCHO	Cu, Ni	DRILLING (2008) 1.63%Ni, 1.11% Cu North Block; 0.47%Ni, 1.00% Cu South Block
W-26	DEBOREX INC.	<i>NI</i>	<i>NI</i>	<i>NI</i>
W-16, W-20, W-21B, W-23, W-23B, W-24, W-25, W-26, W-27	DIAGNOS INC.	<i>NI</i>	<i>NI</i>	<i>NI</i>
W-5D, W-24A, W-24B	EVERTON RESOURCES INC.	LAC SCOTT, BATTLESHIP	Au, Cu	<i>NI</i>
W-24A	EXPLOR RESOURCES INC.	NELLIGAN EXTENSION	Ag, Au	<i>NI</i>

W-27	EXPLORATION CALIBERT INC.	CALIBERT	Ag, Au	
W-14, W-18, W-19	EXPLORATION INNOVATEURS DE QUEBEC INC.	<i>NI</i>	Au, Cu	<i>NI</i>
W-13B, W-14, W-18, W-24A	EXPLORATION METAUXDIC	<i>NI</i>	Au	<i>NI</i>
W-5C, W-5D	EXPLORATION NID'OR (2000) INC.	<i>NI</i>	Au	<i>NI</i>
W-21, W-21C, W-23, W-24A, W-27	EXPLORATION ORBITE VSPA INC.	<i>NI</i>	Al	<i>NI</i>
W-23B	FANCAMP EXPLORATION LTD.	<i>NI</i>	Fe, U	<i>NI</i>
W-24A, W-24B	FREEWEST RESOURCES CANADA INC.	See MURGOR RESOURCES INC.		
W-13B	GEONOVA EXPLORATION INC.	<i>NI</i>	<i>NI</i>	<i>NI</i>
W-5A, W-23A, W-27	GESTION IAMGOLD QUEBEC INC.	<i>NI</i>	<i>NI</i>	<i>NI</i>
W-22, W-23, W-23A	GL GEOSERVICES INC. 50% / BOUCHARD, MARC 50%	<i>NI</i>	<i>NI</i>	<i>NI</i>
W-23A, W-23B	GLEN EAGLE RESOURCES INC.	BARRY-SOUART	Au	Acq 2008
W-23A, W-23B	GLOBEX MINING ENTERPRISES INC.	<i>NI</i>	<i>NI</i>	<i>NI</i>
W-21B, W-23	GLR RESOURCES INC.	<i>NI</i>	<i>NI</i>	<i>NI</i>
W-23A, W-24, W-24A, W-24B	GOLDEN VALLEY MINES LTD.	GRASSROOTS EXPLORATION PROGRAM	Au	<i>NI</i>
W-21A	GRANIZ MONDIAL INC.	<i>NI</i>	Au	<i>NI</i>
W-13, W-13A	HE 5 MINING CORPORATION INC.	<i>NI</i>	<i>NI</i>	<i>NI</i>

W-13A, W-13B, W-25A	HINTERLAND METALS INC.	LOCKOUT PLATEAU/ EBAY	Au PGE	5.2 g/t Au over 2.0 m 46 g/t PGE (2008)
W-13, W-13A	JDG MINERAL RESOURCES LTD.	<i>NI</i>	<i>NI</i>	<i>NI</i>
W-25B	JEAN DESCARREAU ET ASSOCIEE LTEE	<i>NI</i>	<i>NI</i>	<i>NI</i>
W-23A	JOURDAN RESOURCES INC.	<i>NI</i>	<i>NI</i>	<i>NI</i>
W-15, W-21, W-21A	KINROSS GOLD CORP.	<i>NI</i>	Au	<i>NI</i>
W-24C	LAKE SHORE GOLD CORP.	<i>NI</i>	Au	<i>NI</i>
W-13A	M45 MINING RESOURCES INC.	<i>NI</i>	Au, Cu, PGE, Zn	<i>NI</i>
W-21, W-21A, W-21B, W-21C	MATAMEC EXPLORATION INC.	L'ESPERANCE	Cu, Zn, DIAMOND	<i>NI</i>
W-13	MDN INC.	<i>NI</i>	Cu, Zn	<i>NI</i>
	MECANEX 70% / MARCOTTE, LAURIAN 30%	<i>NI</i>	<i>NI</i>	<i>NI</i>
W-23B	MECANEX 90% / MARCOTTE, LAURIAN 10%	<i>NI</i>	<i>NI</i>	<i>NI</i>
W-24B, W-24C, W-24D	MEGASTAR DEVELOPMENT CORP.	RALLEAU	Cu, Zn	Acq
W-20, W-21, W-24A, W-25A, W-25B	METANOR RESOURCES INC.	BARRY GOLD DEPOSIT	Au	Commercial production BARRY PIT
W-26	MONTERO MINING AND EXPLORATION LTD.	<i>NI</i>	U	<i>NI</i>
W-24C	MORONO MINES LTD.	<i>NI</i>	<i>NI</i>	<i>NI</i>
W-10A, W-12, W-22, W-23A, W-24A, W-25A, W-25B	MURGOR RESOURCES INC.	FANCAMP NELLIGAN BENOIT	Au Au Au, Cu	10.4 g/t Au over 4.30 m 28.06 g/t Au over 4.54 m

W-10A, W-12, W-22, W-25A, W-25B, W-26	MURGOR RESOURCES INC. 50% / FREEWEST RESOURCES CANADA INC. 50%	WINDFALL BARRY EAGLE RIVER GREENSHIELD	Au Au Au Au	Optioned to EAGLE HILL RESOURCES INC.
W-11A, W-11B, W-18, W-21, W-21C, W-24A	NIOGOLD MINING CORP.	<i>NI</i>	Au	<i>NI</i>
W-25A, W-25B	NORONT RESOURCES LTD.	WINDFALL LAKE	Au	<i>NI</i>
W-25A	NORTH AMERICAN EXPLORATION LTD.	<i>NI</i>	<i>NI</i>	<i>NI</i>
W-21, W-21A, W-21B, W-21C	NORTHERN SUPERIOR RESOURCES INC. NORTHERN SUPERIOR RESOURCES INC. / MATAMEC EXPLORATION INC.	BACHELOR LAKE L'ESPERANCE WACHIGABAU	GOLD DIAMOND Au, Ag, Cu	<i>NI</i> <i>NI</i> 10.3 g/t Au over 0.3 m 2.62% Cu, 14 g/t Ag, and 3.14 g/t Au over 3.25 m
W-21, W-21A, W-21B	NQ EXPLORATION INC.	GAND 1	Au	<i>NI</i>
W-5D	NUINSCO RESOURCES LTD.	<i>NI</i>	<i>NI</i>	<i>NI</i>
W-22	QUEENSTON MINING INC.	PHOENIX	Au, Cu	<i>NI</i>
W-23A	SEDIAMEK INC.	<i>NI</i>	<i>NI</i>	<i>NI</i>
W-23A	SEMENTIOU INC.	<i>NI</i>	<i>NI</i>	<i>NI</i>
W-25A, W-25B	SOCIETE MINIERE RIVIERE HARRICANA INC.	<i>NI</i>	<i>NI</i>	<i>NI</i>
W-1, W-5C, W-13, W-21, W-21A, W-23A, W-23B, W-24A, W-27	SOQUEM INC.	<i>NI</i>	<i>NI</i>	<i>NI</i>

W-21, W-21A, W-21B	SOQUEM INC. 50% / INMET MINING CORP 50%	<i>NI</i>	<i>NI</i>	<i>NI</i>
W-21, W-21A, W-24A	SOQUEM INC. 50% / MDN INC. 50%	<i>NI</i>	<i>NI</i>	<i>NI</i>
W-24C	SOQUEM INC. 50% / NORMABEC MINING RESOURCES LTD.	<i>NI</i>	<i>NI</i>	<i>NI</i>
W-23A	SOQUEM INC. 50% / PLEXMAR RESOURCES INC. 50%	<i>NI</i>	<i>NI</i>	<i>NI</i>
W-25A, W-25B	STELLAR PACIFIC VENTURES INC.	<i>NI</i>	Au	<i>NI</i>
W-21	TECK COMINCO LTD 70% / CENTRAL ASIA GOLDFIELD CORP. 30%	<i>NI</i>	<i>NI</i>	<i>NI</i>
W-20, W-24A	TECK COMINCO LTD.	<i>NI</i>	<i>NI</i>	<i>NI</i>
W-25B	TECTONIC RESOURCES INC.	<i>NI</i>	<i>NI</i>	<i>NI</i>
W-25A	URBANA CORP.	<i>NI</i>	<i>NI</i>	<i>NI</i>
W-5D	VICTORY NICKEL INC.	LAC ROCHER	Co, Cu, Ni	PEA
W-23B, W-26	VIOR INC.	BUTEUX-FECTEAU	Cu, Zn	D(9:2,080) (2008) 2.12% Zn over 0.5m
W-23A	VISIBLE GOLD MINES INC.	HAZEUR	Au	D(11:2,550) (2008)
W-1, W-2, W-13, W-13A, W-13B, W-14, W-24B, W-24D	XSTRATA CANADA CORP.	<i>NI</i>	<i>NI</i>	<i>NI</i>
	PROSPECTORS			
W-14	AYOTTE, JACQUES 50% / AYOTTE, ETIENNE 50%			
W-26	AZARI, KAMBIZ			
W-24	BORDUAS, BERNARD			

W-16	BOUCHARD, CLERMONT			
W-22	BOUCHARD, CLERMONT 50% / GAUTHIER, REAL 50%			
W-23B, W-26	BOUCHARD, MARC			
W-16, W-23	BOUCHARD, MARC 50% / TREMBLAY, ALAIN 50%			
W-25B	BRASSARD, BERTRAND			
W-13, W-13A	CASIDI, IAN			
W-24A, W-24B	CHARBONEAU, REMI			
W-26	COYLE, PHILIP TERRENCE			
W-14	CROSS, DON			
W-26	DE FRANCE, ELIZABETHE			
W-5D, W06, W-10, W-12, W-13B, W-21B, W-21C, W-22, W-23A, W-24C, W-24D, W-25A	DENTINGER, JEAN-CLAUDE			
W-23A	DESCARREAU, JEAN			
W-21A, W-21B, W-23, W-23A, W-23B, W-26	DESGAGNE, LARRY			
W-26	DESGAGNE, LARRY 25% / FRIGON, BENOIT 25% / TREMBLAY, JEAN-LOUIS 25%, POTVIN, DENIS 25%			
W-21C	DESGAGNE, LARRY 33% / FRIGON, BENOIT 33% / TREMBLAY, JEAN-LOUIS 33%			

W-26	DESGAGNE, LARRY 40% / FRIGON, BENOIT 30% / TREMBLAY, JEAN-LOUIS 30%			
W-21C	DESGAGNE, LARRY 50% / GIRARD, LUDGER 50%			
W-21C, W-24A	DESROSIERS, FRANCOIS F.			
W-22	DUPUIS, MARC ANDRE			
W-5D, W-9, W-24B	FEKETE, MARK			
W-20, W-22, W-24A	FRIGON, JACQUES			
W-23A, W-27	GAGNON, ROBERT			
W-16	GAUTHIER, REAL			
W-16, W-21A	GOSMAN, DAVID			
W-2, W-13, W-14, W-18, W-19, W-21B, W-21C, W-24	GRIESBACH, GLENN 50% / SHEIKHOESLAMI, SALMASI KAMALEDDING 50%			
W-23A	GUILLEMETTE, FRANK			
W-23	HAWLEY, PETER			
W-25A	HUNTER, JAMES			
W-25A, W-25B, W-26	LACASSE, RICHARD			
W-25A, W-25B, W-26	LAMBERT, BERTHE			
W-16, W-22, W-23B	LAMOTHE, GILBERT 50% / BOUCHARD, MARC 50%			
W-24A	LANTHIER, GILLES			

W-4, W-5D, W-21, W-24A, W-25A, W-25B, W-26	LAVOIE, MICHEL			
W-26	LEMIEUX, OLIVIER 50% / LEMIEUX, SAMUEL 50%			
W-13A, W-13B, W-14	MACDONALD, CYNTHIA			
W-23A	MACLEOD, JACQUELINE			
W-5A	MANSEAU, DANIELLE 50% / DOIRON, SERGE 50%			
W-23B	MARCOTTE, LAURIAN			
W-5D, W-9	MASSON, MARIO			
W-23	MCCORMICK, GLENN 50% / BOUCHARD, HUGUETTE 50%			
W-13, W-27	NEALON, MARGARET			
W-21A, W-27	O'BRIEN, PATRICK (APELLA RESOURCES INC.)			
W-23A	O'CONNOR, TERRENCE P.			
W-14, W-19, W-23A, W-24, W-24B, W-24C, W-24D, W-27	PERRON, TONY			
W-25A	ROBERT, GERARD			
W-24, W-25A	ROBERT, JEAN			
W-1, W-13	ROBERT, JEAN 50% / DARVEAU, RENE 50%			
W-25B	ROBY, GAETAN			
W-25A, W-25B, W-26	ROBY, MICHEL			

W-23A	ROUSSEAU, RENE			
W-23B	SALT, HENRY			
W-24A	SCODNICK, PETER H. 50% / AHRENS, JOHN H. 50%			
W-23A, W-27	SENECHAL, BERNARD			
W-21B	SIMARD, ROBERT			
W-25B	SIMONEAU, MARCEL			
W-23A	SMITH, PETER 50% / PARCEAUD, JUDY 50%			
W-5D	ST-PIERRE, DANIEL			
W-16, W-23	TREMBLAY, JEAN-LOUIS			
W-1, W-13	ZAMIDA, DAVID			
W-25A	ZEFRANI, MASHE			

6. CREE NATION OF OUJE-BOUGOUMOU

6.1. *Geology and mineral resources potential*

The community of Ouje-Bougoumou is proximal to Chapais and Chibougamau. The Chibougamau area is characterized by 2 mafic-felsic volcanic cycles (the Roy Group) overlain by a sedimentary assemblage (the Opemisca Group). The Roy Group includes mafic intrusions such as the Lac Doré Complex, the Cummings Complex and the Opawica Complex. Multi-phase synvolcanic granitoid intrusions (the Chibougamau Pluton) occur in the core of anticlines (Doucet *et al*, 2003).

Two types of deposits are characteristic of this area: massive sulphide veins with copper and gold mineralization occurring in shear zones and porphyry-type copper-gold mineralization.

OUJE-BOUGOUMOU TRAPLINES:

Number of companies with active claims: 52.

Number of prospectors with active claims: 43 including 1 Cree prospector.

Substances: gold (Au), silver (Ag), copper (Cu), zinc (Zn), nickel (Ni), molybdenum (Mo), uranium (U), and diamond.

Highlights:

- 7.94 g/t Au on the **CARTIER RESOURCES INC.** DOLLIER property;
- 3.6 million tonnes inferred resources grading 1.1% Cu, 5.2% Zn, 0.3 g/t Au and 36 g/t Ag on the **COGITORE RESOURCES INC.** SCOTT LAKE property;
- 6.56 g/t Au on the **TAWSHO MINING INC.** CHEVRIER property.

6.2. Mineral Exploration Activity (Ouje-Bougoumou)

TRAPLINE	COMPANIES/ PROSPECTORS	PROJECTS	SUBSTANCES	ACTIVITY FINDINGS
O-54, O-58, O-59	2736-1179 QUEBEC INC.	<i>NI</i>	<i>NI</i>	<i>NI</i>
O-57, O-59	6945295 CANADA INC.	<i>NI</i>	<i>NI</i>	<i>NI</i>
O-53, O-54	ADVENTURE GOLD INC.	<i>NI</i>	<i>NI</i>	<i>NI</i>
O-55, O-57, O-58	AGNICO EAGLE MINES LTD.	<i>NI</i>	<i>NI</i>	<i>NI</i>
O-55	ALEXANDRIA MINERALS CORP.	GWILLIM	Au	<i>NI</i>
O-57, O-58, O-59, O-60, O-61	APELLA RESOURCES INC.	CHIBOUGAM AU COPPER GOLD PROJECTS	Cu, Au	PEM
O-59, O-60	ARIANNE RESOURCES INC.	R-14	Au	<i>NI</i>
O-48B	BEAUFIELD RESOURCES INC.	<i>NI</i>	<i>NI</i>	<i>NI</i>
O-55	BEAUROX MINES LTD. / ALTO VENTURES LTD.	NORBEAU PROPERTY	Au	<i>NI</i>
O-54, O-59, O-60	BULL'S EYE EXPLORATION	CHAPAIS OBALSKI	Au, Cu, Zn Au	<i>NI</i> <i>NI</i>
O-59	CARTIER RESOURCES INC.	DOLLIER	Au	7.94 g/t Au over 1 m
O-58, O-60	CELTIC MINERALS LTD.	MUSCOCHO	Cu, Ni	D
O-54, O-58, O-59	COGITORE RESOURCES INC.	SCOTT LAKE LEMOINE (jv INMET)	Cu, Zn Cu, Zn	3.6 million tonne inferred resources grading 1.1% Cu, 5.2% Zn, 0.3 g/t Au and 36 g/t Ag <i>NI</i>

O-55, O-57, O-58, O-59, O-60	DIAGNOS INC.	<i>NI</i>	<i>NI</i>	<i>NI</i>
O-58	DIAGOLD EXPLORATION INC.	<i>NI</i>	Cu, Zn	<i>NI</i>
O-57	DIOS EXPLORATION INC.	CHIBOUKI	DIAMOND	<i>NI</i>
O-57, O-59	DOCUSCIENCE INC.	<i>NI</i>	<i>NI</i>	<i>NI</i>
O-59, O-60	EXPLORATEURS INNOVATEURS DE QUEBEC INC.	<i>NI</i>	<i>NI</i>	<i>NI</i>
O-58, O-59	FANCAMP EXPLORATION LTD.	<i>NI</i>	<i>NI</i>	<i>NI</i>
O-58	FIELDEX EXPLORATION INC.	SCOTT	Au, Cu	<i>NI</i>
O-59, O-60	GESTION IAMGOLD QUEBEC INC.	<i>NI</i>	<i>NI</i>	<i>NI</i>
O-53, O-59	GL GEOSERVICE INC. 50% / BOUCHARD, MARC 50%	<i>NI</i>	<i>NI</i>	<i>NI</i>
O-58	GLOBEX MINING ENTERPRISES INC.	BUCKELL LAKE LAKE SIMON GRANDROY	Au Au Au, Cu	<i>NI</i> JV RESSOURCES MINIÈRES PROCESSOR INC.
O-55	GOLDEN GOOSE RESOURCES INC.	GWILLAM MINE	Au	<i>NI</i>
O-54, O-55, O-58, O-59	GOLDEN VALLEY MINES LTD.	GRASSROOTS EXPLORATION PROJECT	Au, Cu	<i>NI</i>
O-57, O-58	JDG MINERAL RESOURCES LTD.	<i>NI</i>	<i>NI</i>	<i>NI</i>
O-60, O-61	JOURDAN RESOURCES INC.	<i>NI</i>	<i>NI</i>	<i>NI</i>
O-59	KODIAK EXPLORATION LTD.	<i>NI</i>	<i>NI</i>	<i>NI</i>
O-59	LAKE SHORE GOLD CORP.	<i>NI</i>	<i>NI</i>	<i>NI</i>
O-48B	LANDORE RESOURCES INC.	<i>NI</i>	<i>NI</i>	<i>NI</i>
O-59, O-60	LOUNOR EXPLORATION INC.	QUEYLUS	Au, Cu, U	<i>NI</i>

O-55	MECANEX 50% / MARCOTTE, LAURIAN 50%	<i>NI</i>	<i>NI</i>	<i>NI</i>
O-58	MECHANEX 70% / MARCOTTE, LAURIAN 30%	<i>NI</i>	<i>NI</i>	<i>NI</i>
O-58	MECHANEX 90% / MARCOTTE, LAURIAN 10%	<i>NI</i>	<i>NI</i>	<i>NI</i>
O-57, O-60, O-61	MESTON RESOURCES INC.	See MSV RESOURCES INC		
O-57, O-61	MESTON RESOURCES INC. 60% / SOQUEM INC. 40%	<i>NI</i>	<i>NI</i>	<i>NI</i>
O-60	MESTON RESOURCES INC. 50% / SOQUEM INC. 50%	<i>NI</i>	<i>NI</i>	<i>NI</i>
O-61	MONTERO MINING AND EXPLORATION LTD.	<i>NI</i>	<i>NI</i>	<i>NI</i>
O-55, O-59	MSV RESOURCES 2007 INC./ CAMPBELL RESOURCES INC. CORNER BAY RESOURCES INC. 50% / SOQUEM INC. 50%	COPPER RAND MINE CORNER BAY MERRILL ISLAND MINE	Au, Cu Cu Cu	Mine closure for December 2008
O-57	MUNDIREGINA RESOURCES CANADA INC.	<i>NI</i>	<i>NI</i>	<i>NI</i>
O-53, O-60	MURGOR RESOURCES INC.	<i>NI</i>	<i>NI</i>	<i>NI</i>
O-53	QUEENSTON MINING INC.	PHOENIX	Ag, Au, Cu	<i>NI</i>
O-54, O-55, O-60	SAGE GOLD INC.	FANCAMP BARLOW	Au Au	<i>NI</i>
O-61	SEDIAMEK INC.	<i>NI</i>	<i>NI</i>	<i>NI</i>
O-53, O-54, O-55, O-57, O-58, O-60, O-61	SOQUEM INC.	<i>NI</i>	<i>NI</i>	<i>NI</i>
O-60	SOQUEM INC. 50% / PLEXMAR RESOURCES INC 50%	<i>NI</i>	<i>NI</i>	<i>NI</i>
O-60	TAWSHO MINING INC.	CHEVRIER	Au	D(21:7,720) 6.56 g/t Au over 3 m

O-60	TAWSHO MINING INC. 63.83% / GESTION IAMGOLD QUEBEC INC. 36.17%	<i>NI</i>	<i>NI</i>	<i>NI</i>
O-48B, O-60	TECTONIC RESOURCES INC.	HAUY- HYGRADE	Au	<i>NI</i>
O-58	THUNDERMIN RESOURCES INC.	SCOTT LAKE	Cu, Zn	<i>NI</i>
O-57	TYPHOON EXPLORATION INC.	MONEXO McCORKILL	Au Cu, Zn	Pr, S, G
O-54, O-55, O-58	VIOR INC.	BARLOW SEBASTIAN LAKE	Ag, Au, Cu Mo	Acq Acq
O-60	VISIBLE GOLD MINES INC.	HAZEUR	Au	D(11:2,550) (2008)
	PROSPECTORS			
O-62	BAHAMAG, AGNES			
O-57	BAWOLAK, MARIE-THERESE 35% / BAWOLAK, CHRISTELLE OLEINKA 35% / HAVARD, PHILIPPE 30%			
O-57	BAWOLAK, MARIE-THERESE 50% / BAWOLAK, CHRISTELLE OLEINKA 50%			
O-57	BOIVIN, CHARLES			
O-57	BOUCHARD, HUGUETTE			
O-54, O-58	BOUCHARD, MARC			
O-58	BOUCHARD, MARC 33.34% / LAMOthe, GILBERT 33.33% / TREMBLAY, ALAIN 33/33%			
O-58	BOUCHARD, MARC 50% / TREMBLAY, ALAIN 50%			
O-59, O-60	CASIDY, IAN			
O-58	CLAVEAU, CHRISTIAN			
O-58	CLAVEAU, CHRISTIAN 50% / TREMBLAY, CLEMENCE 50%			
O-61	DENTINGER, JEAN CLAUDE			

O-62	DESBIEN, MICHEL 33.34% / BOILY, JEAN-JACQUES 33.33% / LAVOIE BERCHMANS 33.33%			
O-62	DESGAGNE, LARRY			
O-61	DESGAGNE, LARRY 25% / FRIGON, BENOIT 25% / TREMBLAY, JEAN-LOUIS 25%, POTVIN, DENIS 25%			
O-58	DESGAGNE, LARRY 34% / FRIGON, BENOIT 33% / TREMBLAY, JEAN-LOUIS 33%			
O-61	DESGAGNE, LARRY 60% / POTVIN, DENIS 40%			
O-58	DUCHESNE, YVETTE			
O-57	GAGNON, ROBERT			
O-59	GIGLIO, ANNA ROSA			
O-59, O-60	GIRARD, ROSAIR			
O-59, O-60	GIRARD, ROSAIR 50% / TREMBLAY, ALAIN 50%			
O-55	GOSMAN, DAVID			
O-60	HUDON, PIERRE PAUL			
O-59	LAMOTHE, GILBERT			
O-53	LAMOTHE, GILBERT 50% / BOUCHARD, MARC 50%			
O-58	LAPOINTE, JONATHAN			
O-62	LAVOIE BERCHMANS 50% / DESBIEN MICHEL 50%			
O-54	LECLERC, ANDRE A.			
O-61	LEFEBVRE, LIONEL 70% / FLEURY, GERVAIS 30%			
O-55, O-58	MARCOTTE, LAURIAN			
O-57	MCCORMICK, GLENN			

O-55, O-57, O-58, O-61	MCCORMICK, GLENN 50% / BOUCHARD, HUGUETTE 50%			
O-59	O'BRIEN, PATRICK (APELLA RESOURCES INC)			
O-61	O'CONNER, TERRENCE P.			
O-59, O-60, O-61	PERRON, TONY			
O-60	ROUSSEAU, RENE			
O-58	SALT, HENRY			
O-57, O-60, O-61, O-62	SENECHAL, BERNARD			
O-62	SIMARD, GERVAIS			
O-59, O-60	SIMARD, ROBERT			
O-62	TACHE, JACYNTHÉ			
O-54, O-58	TREMBLAY, ALAIN			
O-61	TREMBLAY, JEAN-LOUIS			



7. CREE NATION OF NEMASKA

7.1 Geology and mineral resources potential

The community of Nemaska is located in the Nemiscau Subprovince of the Superior Structural Province. The Nemiscau Subprovince is bordered on the south by the Opatica Subprovince and on the north by the La Grande Subprovince. The northern limit of the Nemiscau Subprovince follows the contacts of the Lower Eastmain River Volcanic Belt. All rocks are Archean in age (Hocq, M., 1994).

The Nemiscau Subprovince can be divided into a volcano-plutonic terrain (the Lac Champion Pluton) and a metasedimentary terrain with amphibolites subdivided into three domains (N-1, N-2 and N-3) (Hocq, M., 1994).

Exploration east of the Nemaska area (Mountain Lake Project-Freewest Resources) discovered arsenic-gold geochemical anomalies that appear to be associated with a hydrothermal gold-arsenic (zinc) mineralizing event in a volcanic belt. Nickel and copper showings were discovered in this belt. Exploration programs located showings of layered chromite, copper-nickel and gold. Mapping outlined important zones of metasomatically metamorphosed rocks which contain the minerals anthophyllite, cordierite and sillimanite. The minerals tourmaline and fuchsite as well as the sulphides arsenopyrite, chalcopyrite, sphalerite, pyrite and pyrrhotite were found to occur locally. These mineral occurrences all contain Platinum Group Elements (PGE) which reflects the association of ultramafic occurrences (Atkins, W.M., 1988).

NEMASKA TRAPLINES:

Number of companies with active claims: 15.

Number of prospectors with active claims: 9.

Substances: gold (Au), silver (Ag), copper (Cu), nickel (Ni), uranium (U), platinum group elements (PGE).

Highlights:

- 8.8 million tonnes at 0.88% Cu indicated resources and 7.8 million tonnes at 0.87% Cu inferred resources on the **SOUTHAMPTON VENTURES INC.** HORDEN LAKE property.

7.2. Mineral Exploration Activity (Nemaska)

TRAPLINE	COMPANIES/ PROSPECTORS	PROJECTS	SUBSTANCES	ACTIVITY FINDINGS
N-18, N-21, N-23, R-19	AZIMUT EXPLORATION INC.	BROADBACK	Au	NI
N-20	BROADBACK RESOURCES INC.	NI	NI	NI
N-18	CANADIAN ROYALTIES INC.	NI	NI	NI
R-21	ELORO RESOURCES LTD.	RUPERT SOUTH	Ag, Cu	NI
R-19	EVERTON RESOURCES INC.	NI	NI	NI
R-18, R-21	GESTION IAMGOLD QUEBEC INC.	NI	NI	NI
R-16, R-18, R-20, R-21	GOLDEN GOOSE RESOURCES INC. / NEMASKA EXPLORATION INC.	LAC LEVAC	Ni-Cu-PGE	Met
N-18	INTERNATIONAL CANALASKA RESOURCES LTD.	NI	NI	NI
R-20, R-21	INTERNATIONAL KIRKLAND MINERALS INC	RUPERT RIVER URANIUM	U	D(15:1,365) (2008)
R-18, R-19, R-20, R-21	JAMES B RESOURCES INC.	NI	NI	NI
R-18, R-20, R-21	MECANEX	NI	NI	NI
R-20, R-21	MECANEX 90% / MARCOTTE, LAURIAN 10%	NI	NI	NI
N-18	NEMISCAU MINES LTD.	See SOUTHAMPTON VENTURES INC.		

R-21	SHERIDAN PLATINUM GROUP LTD.	<i>NI</i>	<i>NI</i>	<i>NI</i>
N-18	SOUTHAMPTON VENTURES INC.	HORDEN LAKE	Cu, Ni	Mineral Resource Estimate 8.8 million tonnes at 0.88% Cu indicated resources and 7.8 million tonnes at 0.87% Cu inferred resources
R-18	TECTONIC RESOURCES INC.	LAC CAUMONT	Cu, Ni	<i>NI</i>
	PROSPECTORS			
N-18	ALLEN, MARYSE			
R-18, R-21	ARPIN, NICOLE			
N-25, R-21	BAMBIC, PETER			
R-18, R-20	CANTORE, VICTOR			
N-20	DENTINGER, JEAN-CLAUDE			
R-16, R-18, R-20, R-21	LAVALLEE, JEAN-RAYMOND			
R-16, R-18, R-20, R-21	LAVALLEE, JEAN-RAYMOND 50% / LAVALLEE, JEAN-SEBASTIEN 50%			
R-16, R-18, R-20, R-21	LAVALLEE, JEAN-SEBASTIEN			
R-20	MARCOTTE, LAURIAN			
R-18, R-20	PRONOVOST, JEAN-MARIE			



8. CREE NATION OF WASKAGANISH

8.1. *Geology and mineral resources potential*

The Waskaganish area is located primarily on metasedimentary rocks of the Nemiscau geologic sub-province of the Superior Province. The rocks consist of paragneiss and schist metamorphosed to the amphibolite and granulite facies. Granites, marble and iron formations are associated with the metasedimentary rocks.

WASKAGANISH TRAPLINES:

Number of companies with active claims: 30.

Number of prospectors with active claims: 7.

Substances: gold (Au), silver (Ag), copper (Cu), nickel (Ni), zinc (Zn), uranium (U), diamond (C), lithium (Li), and sphagnum peat moss.

Highlights:

- 30.2 g/t Au on the **ARIANNE RESOURCES INC.** OPINACA property;
- 4.4%Li₂O on the **ARIANNE RESOURCES INC.** KOMO property;
- 2.15% Li₂O on the **DIOS EXPLORATION INC.** PONTAX-LITHIUM property;
- 10.8 g/t Au on the **EASTMAIN RESOURCES INC. – OPINACA MINES LTD.** ELEONORE SOUTH property;
- 22.97 g/t Au on the **VIRGINIA MINES INC.** ANATACAU-WABAMISK property;
- 8.8 million tonnes at 0.88% Cu indicated resources and 7.8 million tonnes at 0.87% Cu inferred resources on the **SOUTHAMPTON VENTURES INC.** HORDEN LAKE property.

8.2. Mineral Exploration Activity (Waskaganish)

TRAPLINE	COMPANIES/ PROSPECTORS	PROJECTS	SUBSTANCES	ACTIVITY FINDINGS
N-7	3098 7994 QUEBEC INC.	<i>NI</i>	<i>NI</i>	<i>NI</i>
A-4	ADVENTURE GOLD INC.	<i>NI</i>	Au	Acq
A-4, N-8	AMERICAN BONANZA GOLD CORP.	FENELON MARTINIERE	Au, Ni Au, Ni	D (2008)
R-10	ARIANNE RESOURCES INC.	WABAMISK KOMO OPINACA	Au Au, Li Au	4.4% Li 30.2 g/t Au
R-10	ARIANNE RESOURCES INC. 50% / SOQUEM INC. 50%	LACH	Au	Pr, S, G
R-10	ARIANNE RESOURCES INC. 50% / VANTEX RESOURCES LTD. 50%	BLACK DOG	Au	<i>NI</i>
R-1A	AZIMUT EXPLORATION INC.	BROADBACK	Au	<i>NI</i>
A-4	BULL'S EYE EXPLORATION	<i>NI</i>	<i>NI</i>	<i>NI</i>
N-5	CANADIAN ROYALTIES INC.	<i>NI</i>	<i>NI</i>	<i>NI</i>
A-4	DETOUR GOLD CORP.	DETOUR LAKE?	Au	<i>NI</i>
N-8	DEVELOPMENT MATAGAMI	<i>NI</i>	<i>NI</i>	<i>NI</i>
N-8	DIAGNOS INC.	<i>NI</i>	<i>NI</i>	<i>NI</i>
R-8, R-9, R-10	DIOS EXPLORATION INC.	PONTAX-LITHIUM	Li	2.15% Li
R-10	EASTMAIN RESOURCES INC. / OPINACA MINES LTD.	ELEONORE SOUTH	Au	D(#:3,500) 10.8 g/t Au over 0.5 m
R-10	ELORO RESOURCES INC.	DELTA	Ag, Cu, Zn	Target Generation Survey report 10.15% Cu over 1.15m (2008)

R-8, R-9, R-10	EVERTON RESOURCES INC.	WILDCAT	Au	NI
A-4, N-8	EXPLORATION METAUXDIC	NI	NI	NI
R-10	GEONORDIC TECHNICAL SERVICES INC.	NI	NI	NI
R-10	GESTION IAMGOLD QUEBEC INC.	NI	NI	NI
R-8, R-10	GOLDEN VALLEY MINES LTD.	CHEECHO O GOLD	Au	NI
N-5	INTERNATIONAL CANALASKA RESOURCES LTD.	NI	NI	NI
R-1A, R-5, R-6, R-8, R-9	MAJESCOR RESOURCES INC.	MIRABELL I	Au, Cu	NI
N-5	NEMISCAU LTD.	See SOUTHAMPTON VENTURES INC.	-	-
A-4	RADISSON MINING RESOURCES INC.	MASSICOTTE	Au	NI
R-8, R-10	SIRIOS RESOURCES INC.	PONTAX (See DIOS EXPLORATION INC.)	Ag, Au, DIAMOND	NI
N-8	SOQUEM INC.	NI	NI	NI
N-5	SOUTHAMPTON VENTURES INC.	HORDEN LAKE	Cu, Ni	Mineral Resource Estimate 8.8 million tonnes at 0.88% Cu indicated resources and 7.8 million tonnes at 0.87% Cu inferred resources
N-8	TOURBIERE BERGER LTEE.		SPHAGNUM PEAT MOSS	

R-10	VANTEX RESOURCES LTD.	BLACK DOG (See ARIANNE RESOURCES INC.)	Au	NI
R-8, R-10	VIRGINIA MINES INC.	ANATACAU - WABAMISK	Au	D(#:2,500) 8.47 g/t Au to 22.97 g/t Au on 2 m
N-8	XSTRATA CANADA CORP.	NI	NI	NI
	PROSPECTORS			
R-10	BAMBIC, PETER			
R-10	LAVALLEE, JEAN-RAYMOND			
R-10	LAVOIE, HENRI			
N-8	MANSEAU, DANIELLE			
A-4	PERRON, TONY			
R-10	ROBERT, JEAN			
N-8	TREMBLAY, DENIS			



9. WHAPMAGOOSTUI FIRST NATION

9.1. *Geology and mineral resources potential*

The community of Whapmagoostui is located in the Bienville Subprovince, a plutonic assemblage occupying the southern part of the northern Superior province. It is composed mainly of migmatized orthogenesis ranging from tonalitic to granodioritic in composition, with enclaves of supracrustal (iron formation, paragneiss, metavolcanic rock) and plutonic (ultramafic) rocks intruded by synkinematic granodioritic to tonalitic plutons and by late biotite granites (Perreault and Moorehead, 2003). This subprovince also contains volcano-sedimentary belts, such as the Lac Fagnant Belt, metamorphosed to the amphibolite facies (Perreault and Moorehead, 2003).

The Cree Mineral Exploration Board conducted mapping activities in the Whapmagoostui region in 2004-2005.

WHAPMAGOOSTUI TRAPLINES:

Number of companies with active claims: 9.

Number of prospectors with active claims: 3.

Substances: gold (Au), copper (Cu), nickel (Ni), iron (Fe), uranium (U).

Highlights:

- 40% Cu and 0.67% U₃O₈ on the **AZIMUT EXPLORATION INC. – ABITEX RESOURCES INC.** SOUTH BIENVILLE property;
- $\geq 0.008\%$ U₃O₈ in 45 of 58 drill-holes on the **BONAVENTURE ENTERPRISES INC.** K9 URANIUM CORRIDOR property.

9.2. Mineral Exploration Activity (Whapmagoostui)

TRAPLINE	COMPANIES/ PROSPECTORS	PROJECTS	SUBSTANCES	ACTIVITY FINDINGS
GW-12, GW-13, GW-15	170364 CANADA INC.	<i>NI</i>	<i>NI</i>	<i>NI</i>
GW-2, GW-16, -17	AZIMUT EXPLORATION INC. / ABITEX RESOURCES INC.	SOUTH BIENVILLE	Cu, U	40% Cu, 0.67% U
GW-1, GW-10, GW-11, GW-13, GW-14, GW-15, GW-16, GW-22	BEARCLAW CAPITAL CORP.	<i>NI</i>	<i>NI</i>	<i>NI</i>
GW-7	BONAVENTURE ENTERPRISES INC.	K9 URANIUM CORRIDOR	U	≥0.008% U 58 drill holes
GW-21, GW-25	CANADIAN ROYALTIES INC.	<i>NI</i>	<i>NI</i>	<i>NI</i>
GW-2, GW-8, GW-9, GW-18, GW-19	NIOCAN INC.	GREAT WHALE IRON	Fe	Met 36% Fe
GW-16	VALE INCO LTD.	<i>NI</i>	Cu, Ni	<i>NI</i>
GW-2	VIRGINIA MINES INC.	LAC FAGNANT	Au	<i>NI</i>
	PROSPECTORS			
GW-5, GW-7, GW-13, GW-19	BAMBIC, PETER			
GW-13	CHAMPAGNE, ALAIN			
GW-8	MACLEOD, JACQUELINE			



10. COMPILATION OF COMPANIES IN EYYOU ISTCHEE

COMPANY	COMMUNITY	WEBSITE
ABITEX RESOURCES INC.	WASWANAPI	www.abitex.ca
ADVENTURE GOLD INC.	OUJE-BOUGOUMOU, WASKAGANISH, WASWANAPI,	www.adventure-gold.com
AGNICO-EAGLE MINES LTD.	MISTISSINI, , OUJE-BOUGOUMOU, WASWANAPI	www.agnico-eagle.com
ALEXANDRIA MINERALS CORP.	OUJE-BOUGOUMOU, WASWANAPI	www.alexandriaminerals.com
ALEXIS MINERALS CORP.	MISTISSINI	www.alexisminerals.com
ALTO VENTURES LTD.	OUJE-BOUGOUMOU, WASWANAPI,	www.altoventures.com
AMERICAN BONANZA GOLD CORP.	WASKAGANISH	www.americanbonanza.com
AMSECO EXPLORATION LTD.	WEMINDJI, WASWANAPI	www.amsecoexploration.com
ANDREANE MINING RESOURCES INC.	MISTISSINI	
ANGLO-CANADIAN URANIUM CORP.	MISTISSINI	www.anglocanex.com
ANTORO RESOURCES INC.	EASTMAIN, WASWANAPI, WEMINDJI-	www.antoro.com
APELLA RESOURCES INC. formerly Novawest Resources Inc.	MISTISSINI, OUJE-BOUGOUMOU, WASWANAPI	www.apellaresources.com
ARIANNE RESOURCES INC .(D')	CHISASIBI, EASTMAIN, OUJE-BOUGOUMOU, WASKAGANISH, WEMINDJI	www.arianne-inc.com
AUGYVA MINING RESOURCES INC.	CHISASIBI, EASTMAIN, WEMINDJI,	www.augyva.com
AUROCK EXPLORATION INC.	WASWANAPI	
AZIMUT EXPLORATION INC	CHISASIBI, EASTMAIN, MISTISSINI, NEMASKA, WASKAGANISH, WEMINDJI, WHAPMAGOOSTUI	www.azimut-exploration.com

BEARCLAW CAPITAL CORP.	CHISASIBI, WHAPMAGOOSTUI	www.bearclawcapital.com
BEARS MINING RESOURCES INC.	WASWANIPI	
BEAUFIELD RESOURCES INC	EASTMAIN, MISTISSINI, OUJE-BOUGOUMOU, WASWANIPI, WEMINDJI	www.beaufield.com
BEAUROX MINES LTD.	OUJE-BOUGOUMOU	
BIG RED DIAMOND CORP.	WASWANIPI	www.bigreddiamond.com
BONAVENTURE ENTERPRISES INC.	CHISASIBI, WHAPMAGOOSTUI	www.bonaventure.us
BREAKWATER RESOURCES LTD.	CHISASIBI, MISTISSINI, WASWANIPI	www.breakwater.ca
BROADBACK RESOURCES INC.	NEMASKA	
BULL'S EYE EXPLORATION	OUJE-BOUGOUMOU, WASKAGANISH, WASWANIPI,	www.explorationbullseye.com
C2C INC.	EASTMAIN, MISTISSINI, WEMINDJI,	www.c2c-exploration.com
CALIBERT EXPLORATIONS LTD.	WASWANIPI	
CAMECO CORPORATION	MISTISSINI	www.cameco.com
CAMPBELL RESOURCES INC.	OUJE-BOUGOUMOU	www.ressourcescampbell.com
CANADIAN CENTURY IRON ORE CORP.	WEMINDJI	
CANADIAN ROYALTIES INC.	NEMASKA, WASKAGANISH, WASWANIPI, WHAPMAGOOSTUI	www.canadianroyalties.com
CANDISCOR RESOURCES INC.	WASWANIPI	www.candiscor.com
CARAT EXPLORATION INC.	WASWANIPI	www.caratexploration.com
CARTIER RESOURCES INC.	OUJE-BOUGOUMOU	www.ressourcescartier.com
CELTIC MINERALS LTD.	OUJE-BOUGOUMOU, WASWANIPI,	www.celticminerals.com
CENTRAL ASIA GOLDFIELD CORP.	WASWANIPI	
CINNABAR VENTURE INC.	MISTISSINI	
COGEMA RESOURCES INC.	MISTISSINI	www.cogema.fr
COGITORE RESOURCES INC.	OUJE-BOUGOUMOU	www.cogitore.com



COONESE JENSE RESOURCES LTD.	CHISASIBI, MISTISSINI	
CORNER BAY RESOURCES INC.	OUJE-BOUGOUMOU	
CREE MINERAL EXPLORATION BOARD	ALL CREE COMMUNITIES	www.cmeb.org
CRUSH TAL EXPLORATION INC.	WEMINDJI	
DE BEERS CANADA EXPLORATION INC.	MISTISSINI	www.debeerscanada.com
DEBOREX INC.	WASWANIPI	
DETOUR GOLD CORP.	WASKAGANISH	www.detourgold.com
DEVELOPPMENT MATAGAMI	WASKAGANISH	
DIADEM RESOURCES LTD.	MISTISSINI	www.diademresources.com
DIAGNOS INC.	OUJE-BOUGOUMOU, WASKAGANISH, WASWANIPI,	
DIAGOLD EXPLORATION INC.	OUJE-BOUGOUMOU	
DIAMOND FRANK EXPLORATION INC.	WEMINDJI, MISTISSINI	www.diagnos.ca
DIANOR RESOURCES INC.	CHISASIBI, EASTMAIN, MISTISSINI, WEMINDJI	www.dianor.com
DIOS EXPLORATION INC.	EASTMAIN, MISTISSINI, OUJE-BOUGOUMOU, WASKAGANISH, WEMINDJI	www.diosexplo.com
DITEM EXPLORATIONS INC.	MISTISSINI	www.ditem.com
DOCUSCIENCES INC.	OUJE-BOUGOUMOU	
DUNSMUIR VENTURES LTD.	MISTISSINI	www.dunsmuirventures.com
EASTMAIN RESOURCES INC.	CHISASIBI, EASTMAIN, MISTISSINI, WASKAGANISH, WEMINDJI	www.eastmain.com
ELORO RESOURCES INC.	CHISASIBI, MISTISSINI, NEMASKA, WASKAGANISH, WEMINDJI,	www.elororesources.com
EVERTON RESOURCES INC.	CHISASIBI, EASTMAIN, MISTISSINI, NEMASKA, WASKAGANISH, WASWANIPI, WEMINDJI,	www.evertonresources.com

EXPLORATION INNOVATEURS DE QUEBEC INC.	MISTISSINI, OUJE-BOUGOUMOU, WASWANIPI,	
EXPLORATION METAUXDIC	CHISASIBI, WASKAGANISH, WASWANIPI	
EXPLORATION MINIERE GRENVILLE INC.	WEMINDJI	
EXPLORATION NID'OR (2000) INC.	WASWANIPI	
EXPLORATION ORBITE VSPA INC.	WASWANIPI	www.explorationorbite.com
EXPLOR RESOURCES INC.	WASWANIPI	www.explorresources.com
FANCAMP EXPLORATION LTD.	OUJE-BOUGOUMOU, WASWANIPI	www.fancampexplorationltd.ca
FIELDDEX EXPLORATION INC.	OUJE-BOUGOUMOU	www.fielddexexploration.com
FOREST GATE RESOURCES INC.	MISTISSINI	www.forestgate.ca
FREEWEST RESOURCES OF CANADA INC.	WASWANIPI	www.freewest.com
GEONORDIC TECHNICAL SERVICES INC.	WASKAGANISH, WEMINDJI	
GEONOVA EXPLORATION INC.	MISTISSINI, WASWANIPI	
GLEN EAGLE RESOURCES INC. formerly Temoris Resources Inc.	WASWANIPI	www.gleneagleresources.com
GL GEOSERVICES INC.	OUJE-BOUGOUMOU, WASWANIPI	
GLOBESTAR MINING CORPORATION	EASTMAIN, WEMINDJI	www.globestarmining.com
GLOBEX MINING ENTERPRISES INC.	OUJE-BOUGOUMOU, WASWANIPI,	www.globexmining.com
GLR RESOURCES INC.	WASWANIPI	www.glrresources.com
GOLD BULLION DEVELOPMENT CORP.	OUJE-BOUGOUMOU	www.goldbulliondevelopmentcorp.com
GOLDCORP. INC.	EASTMAIN, WEMINDJI	www.goldcorp.com
GOLDEN GOOSE RESOURCES INC.	MISTISSINI, NEMASKA, OUJE-BOUGOUMOU	www.goldengooseres.com
GOLDEN TAG RESOURCES LTD.	EASTMAIN, MISTISSINI, WEMINDJI-	www.goldentag.ca

GOLDEN VALLEY MINES LTD.	EASTMAIN, OUJE-BOUGOUMOU, WASKAGANISH, WASWANIPI, WEMINDJI-	www.goldenvalleymines.com
GOLD HAWK RESOURCES INC.	WASWANIPI	www.goldhawkresources.com
GRANIZ MONDIAL INC.	WASWANIPI	
HE 5 MINING CORPORATION INC.	WASWANIPI	
HINTERLAND METALS INC.	WASWANIPI	www.hinterlandmetals.com
IAMGOLD CORP.	EASTMAIN, MISTISSINI, NEMASKA, OUJE-BOUGOUMOU, WASKAGANISH, WASWANIPI, WEMINDJI	www.iamgold.com
INMET MINING CORPORATION	MISTISSINI, WASWANIPI	www.inmetmining.com
INTERNATIONAL CANALASKA RESOURCES INC.	NEMASKA, WASKAGANISH	
INTERNATIONAL KIRKLAND MINERALS INC.	MISTISSINI, NEMASKA	www.internationalkirkland.com
JAMES B RESOURCES INC.	NEMASKA	
JASPER VENTURE INC.	MISTISSINI	
JDG MINERAL RESOURCES LTD.	OUJE-BOUGOUMOU, WASWANIPI	
JEAN DESCARREAU ET ACCOCIEE LTD.	WASWANIPI	
JETON D'OR RESOURCES INC.	CHISASIBI	
JOURDAN RESOURCES INC.	OUJE-BOUGOUMOU, WASWANIPI	
KINROSS GOLD CORP.	WASWANIPI	www.kinross.com
KODIAK EXPLORATION LTD.	MISTISSINI, OUJE-BOUGOUMOU	www.kodiakexp.com
LAKE SHORE GOLD CORPORATION	OUJE-BOUGOUMOU, WASWANIPI	www.lsgold.com
LANDMARK MINERALS INC.	MISTISSINI	www.landmarkminerals.com
LANDORE RESOURCE INC.	MISTISSINI, OUJE-BOUGOUMOU	www.landore.com
LEXAM EXPLORATIONS INC.	MISTISSINI	www.lexamexplorations.com

LOUNOR EXPLORATION INC.	OUJE-BOUGOUMOU	www.lounor.com
LYON LAKE MINES LTD.	MISTISSINI	
M45 MINING RESOURCES INC.	WASWANIPI	
MACDONALD MINES EXPLORATION LTD.	CHISASIBI, MISTISSINI	www.macdonaldmines.com
MAJESCOR RESOURCES INC.	EASTMAIN, MISTISSINI, WASKAGANISH	www.majescor.com
MATAMEC EXPLORATIONS INC.	EASTMAIN, WASWANIPI, WEMINDJI	www.matamec.com
MDN INC.	MISTISSINI, WASWANIPI	www.mdn-mines.com
MECANEX	MISTISSINI, OUJE-BOUGOUMOU, NEMASKA, WASWANIPI	
MEGASTAR DEVELOPMENT CORP.	WASWANIPI	www.megastardevelopment.com
MELKIOR RESOURCES INC.	MISTISSINI	www.melkior.com
MESTON RESOURCES INC.	OUJE-BOUGOUMOU	www.ressourcescampbell.com
METALEX VENTURES LTD.	WEMINDJI	www.metalexventures.com
METANOR RESOURCES INC.	EASTMAIN, WASWANIPI, WEMINDJI-	www.metanor.ca
MIDLAND EXPLORATION INC.	EASTMAIN, MISTISSINI, WEMINDJI	www.explorationmidland.com
MIRABEL RESOURCES INC.	WASWANIPI	www.mirabelresources.com
MJL EXPLORATION INC.	EASTMAIN, WEMINDJI	
MONTERO MINING AND EXPLORATION LTD.	OUJE-BOUGOUMOU, WASWANIPI	www.monteromining.com
MORONO MINES LTD.	WASWANIPI	
MSV RESOURCES INC.	OUJE-BOUGOUMOU	www.ressourcescampbell.com
MUNDIREGINA RESOURCES CANADA INC.	MISTISSINI, OUJE-BOUGOUMOU	
MURGOR RESOURCES INC.	OUJE-BOUGOUMOU, WASWANIPI	www.murgor.com
NEMASKA EXPLORATION INC.	NEMASKA	
NEXTAIR INC.	WASWANIPI	

NIMSKEN CORPORATION INC.	OUJE-BOUGOUMOU	
NIOCAN INC.	WHAPMAGOOSTUI	www.niocan.com
NIOGOLD MINING CORPORATION	WASWANIPI	www.niogold.com
NORDAIR QUEBEC 2000 INC.	EASTMAIN	
NORMABEC MINING RESOURCES LTD.	MISTISSINI, WASWANIPI	www.normabec.com
NORONT RESOURCES LTD.	WASWANIPI	www.norontresources.com
NORTH AMERICAN EXPLORATION LTD.	WASWANIPI	
NORTHERN MINING EXPLORATIONS LTD.	MISTISSINI, WASWANIPI	www.xnord.com
NORTHFIELD METALS INC.	CHISASIBI	
NOVA URANIUM CORP.	MISTISSINI, WEMINDJI	www.novauranium.com
NOVAWEST RESOURCES INC.	OUJE-BOUGOUMOU	www.novawest.com
NQ EXPLORATION INC.	WASWANIPI	www.nqexploration.com
NUINSCO RESOURCES INC	OUJE-BOUGOUMOU, WASWANIPI	www.nuinsco.ca
OPINACA MINES LTD.	EASTMAIN, WEMINDJI	www.goldcorp.com
OTISH ENERGY INC. formerly Kakanda Resources inc.	MISTISSINI	www.otishenergyinc.com
PACIFIC BAY MINERALS LTD.	MISTISSINI	www.pacificbayminerals.com
PLEXMAR RESOURCES INC.	OUJE-BOUGOUMOU, WASWANIPI	www.plexmar.com
PRO-SPECT-OR RESOURCES INC.	EASTMAIN	
PRO-OR MINING RESOURCES INC.	CHISASIBI, EASTMAIN, WEMINDJI	www.pro-or.com
PURE GOLD MINERALS INC.	MISTISSINI	www.puregold.ca
QUEENSTON MINING INC.	OUJE-BOUGOUMOU, WASWANIPI	www.queenston.ca
QUEST URANIUM CORP.	WEMINDJI	www.questuranium.com
RADISSON MINING RESOURCES INC.	OUJE-BOUGOUMOU, WASKAGANISH	www.radisonmining.com
RIDGESTAKE RESOURCES INC.	EASTMAIN, MISTISSINI, WEMINDJI	
RUBY HILL EXPLORATION INC.	MISTISSINI	

SAGE GOLD INC.	OUJE-BOUGOUMOU	www.sagegoldinc.com
SANTOY RESOURCES LTD.	MISTISSINI	www.santoy.ca
SEDIAMEK INC.	OUJE-BOUGOUMOU, WASWANIPI	
SEMENTIOU INC.	WASWANIPI	
SHERIDAN PLATINUM GROUP LTD.	NEMASKA, WEMINDJI	
SIRIOS RESOURCES INC.	CHISASIBI, EASTMAIN, MISTISSINI, WASKAGANISH WASWANIPI, WEMINDJI	www.sirios.com
SOCIETE DE DEVELOPPEMENT DE LA BAIE-JAMES	EASTMAIN	www.sdbj.gouv.qc.ca
SOCIETE MINIERE ALTA INC.	MISTISSINI	
SOCIETE MINIERE RIVIERE HARRICANA INC.	WASWANIPI	
SODIMEX TRADNG LTD.	CHISASIBI, EASTMAIN,	
SOQUEM INC.	MISTISSINI, OUJE- BOUGOUMOU, WASWANIPI, WASKAGANISH, WEMINDJI	www.soquem.qc.ca
SOUTHAMPTON VENTURES INC.	NEMASKA, WASKAGANISH	www.southamptonventures.com
STARFIRE MINERALS INC.	CHISASIBI	www.starfireminerals.ca
STELLAR PACIFIC VENTURES INC.	MISTISSINI, WASWANIPI	www.stellarpacific.com
STELMINE CANADA LTD.	EASTMAIN	www.stelmine.com
STORNOWAY DIAMOND CORPORATION	MISTISSINI	www.stornowaydiamonds.com
STRATABOUND MINERALS CORPORATION	MISTISSINI	www.stratabound.com
STRATECO RESOURCES INC.	MISTISSINI, WASWANIPI, WEMINDJI	www.stratecoinc.com
SUPERIOR DIAMONDS INC.	MISTISSINI	www.superiordiamonds.com
TARREX MANAGEMENT	EASTMAIN	
TAWSHO MINING INC.	OUJE-BOUGOUMOU	www.tawshominig.com
TECK COMINCO LTD.	WASWANIPI	www.teckcominco.com

TECTONIC RESOURCES INC.	MISTISSINI, OUJE-BOUGOUMOU, NEMASKA, WASWANAPI	www.tectonicres.com
THREEGOLD RESOURCES INC.	MISTISSINI, WEMINDJI	www.threegold.ca
THUNDERMIN RESOURCES INC.	OUJE-BOUGOUMOU	www.thundermin.com
TOURBIERE BERGER LTEE.	WASKAGANISH	
TYPHOON EXPLORATION INC.	EASTMAIN, OUJE-BOUGOUMOU, WEMINDJI	www.explorationtyphon.com
UEM INC.	MISTISSINI	
UNIVERSAL MINING RESOURCES INC. formerly U. Mining Resources Inc.	CHISASIBI	www.umining.com
URANIUM BAY RESOURCES INC.	CHISASIBI, EASTMAIN, WEMINDJI	www.uraniumbayresources.com
URANOR INC.	MISTISSINI	
URBANA CORPORATION	WASWANAPI	www.urbanacorp.com
VAALDIAM RESOURCES LTD.	MISTISSINI	www.vaaldiam.com
VALE INCO LTD.	EASTMAIN, WHAPMAGOOSTUI	www.inco.com
VANTEX RESOURCES LTD.	CHISASIBI, EASTMAIN, WASKAGANISH, WEMINDJI	www.vantexresources.com
VIOR INC.	MISTISSINI, OUJE-BOUGOUMOU, WASWANAPI	www.vior.ca
VICTORY NICKEL INC.	WASWANAPI	www.victorynickel.ca
VIRGINIA MINES INC.	CHISASIBI, EASTMAIN, MISTISSINI, WASKAGANISH, WEMINDJI, WHAPMAGOOSTUI	www.virginia.qc.ca
VISIBLE GOLD MINES INC.	OUJE-BOUGOUMOU, WASWANAPI	www.visiblegoldmines.com
VVC EXPLORATION CORPORATION	CHISASIBI, EASTMAIN, WEMINDJI	www.vvcexploration.com
WEMINDJI EXPLORATION INC. (WEMEX)	WEMINDJI	www.wemex.ca
WESTERN TROY CAPITAL RESOURCES INC.	MISTISSINI	www.westerntroy.com



WOLF DEN RESOURCES INC.	WASWANUPI	www.wolfdenresources.com
XEMPLAR ENERGY CORP.	MISTISSINI	www.xemplar.ca
XSTRATA CANADA CORP. formerly Falconbridge Ltd.	MISTISSINI, WASKAGANISH, WASWANUPI	www.xstrata.com

11. REFERENCES

ATKINS, W.M., 1988. - Geochemical soil sampling survey. Mountain Lake Project, Nemiscau area. Ministère des Ressources naturelles, GM 46904.

DOUCET, P. – MOOREHEAD, J. – COTÉ, S., 2003 – Southern Part of the Superior Province (Abitibi and Pontiac Subprovinces) in Report on mineral exploration activities in Québec 2002, Ministère des Ressources naturelles, Québec; DV 2003-02, pages 21-28.

HOCQ, M.1994 – La Province du Supérieur in Géologie du Québec, Ministère des Ressources naturelles, Québec, MM 94-01, pages 7-19.

HOULE, P., 2003 – James Bay Region, Central Part of the Superior Province (Opatica, Opinaca, Nemiscau, and La Grande Subprovinces) in Report on mineral exploration activities in Québec 2002, Ministère des Ressources naturelles, Québec; DV 2003-02, pages 11-16.

LARBI, Y., – MacKINNON, M., 2006 – Eeyou Istchee Mineral Exploration Activities for 2005. Cree Mineral Exploration Board; 75 pages.

MOORHEAD, J. – BEAUMIER, M. – LEFEBVRE, D. – BERNIER, L – MARTEL, D., 1999 – Kimberlites, linéaments et rifts crustaux au Québec. Ministère des Ressources naturelles, Québec; MB 99-35, 50 pages.

MOUKHSIL, A. – DOUCET, P., 1999 – Géologie de la région des lacs Villages (feuillet SNRC 33B/03). Ministère des Ressources naturelles, Québec; RG 99-04, pages 6-12.

MOUKHSIL, A., 2000 – Géologie de la région des lacs Pivert, Anatacau, Kauputauchechun et Wapamisk (feuillets SNRC 33C/01, 33C/02, 33c/07 et 33C/08). Ministère des Ressources naturelles, Québec; RG 2000-04, pages 7-18.

MOUKHSIL, A. – VOICU, G.- DION, C. – DAVID, J. – DAVIS, D.W. – PARENT, M., 2001 – Géologie de la région DE LA Basse-Eastmain centrale (feuillets SNRC 33C/03, 33C/04, 33C/05 et 33C/06). Ministère des Ressources naturelles, Québec; RG 2001-08, pages 9-16.

MOUKHSIL, A. – LEGAULT, M., 2002 – Géologie de la région de la Basse-Eastmain occidentale (feuillets SNRC 33D/01, 33D/02, 33D/07, 33D/08). Ministère des Ressources naturelles, Québec; RG 2002-09, pages 5-10.

PERREAULT, S. – MOOREHEAD, J., 2003 – Northern Part of the Superior Province (Minto, Bienville, and Ashuanipi Subprovinces) in Report on mineral exploration activities in Québec 2002, Ministère des Ressources naturelles, Québec; DV 2003-02, pages 3-8.



ANNEX 1. ABBREVIATIONS USED IN THIS REPORT

The following is a legend of the abbreviations used in this report.

Prospecting and geological surveys

B	Bulk sampling
D(#h:m)	Diamond drilling (number of holes : total meters drilled)
G	Geological mapping
Min	Mineralogical studies
Pg	Unspecified prospecting and geological study
Pr	Prospection
Drc(#h:m)	Reversed circulation drilling (number of holes:total meters)
Rsi	Remote sensing interpretation
S	Sampling
Sch	Channel sampling
T	Trenching and stripping
LC	Line cutting

Geochemical surveys

Gc	Unspecified geochemical surveys
G(b)	Boulder geochemistry
Gc(e)	Esker geochemical survey
Gc(h)	Humus geochemical survey
Gc(lb)	Lake bottom sediment geochemical survey
Gc(r)	Lithochemical survey (rock)
Gc(s)	Stream sediments geochemical survey
Gc(sl)	Soils geochemical survey
Gc(t)	Till geochemical survey

Geophysical surveys



AGp	Unspecified airborne geophysical survey
DPEM	Drill hole pulse electromagnetic survey (borehole)
Gp	Unspecified ground geophysics
EM	Electromagnetic survey
IP	Induced polarization survey
Mag	Magnetic survey
Mag-EM(A)	Airborne magnetic and electromagnetic survey
VTEM(A)	Airborne VTEM survey
MEGATEM	Airborne MEGATEM survey
PP	Pulse polarization survey
Rd	Radiometric survey
Sc	Scintillometric survey

Other types of studies/work

Met	Metallurgical studies
TE	Technical evaluation
RE	Resource estimate
DMS	Dense media separation

Other information

Acq	Acquired property
JV	Joint venture
Ma	Millions of years before the present
PFS	Pre-Feasibility Study
PEA	Preliminary Economic Assessment
Ga	Billions of years before the present
KIM	Kimberlite Indicator Minerals
ppb	Part per billion



ppm Part per million
cpht Carats per hundred tonne
g/t Grams per tonne
ACF Active Channel Facies
CBF Channel Bar Facies
Tpd Tonnes per day
QFP Quartz-feldspar-porphyry
eU Equivalent uranium
cps Counts per second

THE CREE MINERAL
EXPLORATION
BOARD



CONSEIL CRI SUR
L'EXPLORATION
MINÉRALE

THE CREE MINERAL
EXPLORATION
BOARD

CONSEIL CRI
SUR L'EXPLORATION
MINÉRALE

16, BEAVER ROAD, WEMINDJI, QUEBEC