



EEYOU ISTCHEE
MINERAL EXPLORATION ACTIVITIES
For the year 2017

Information contained in this report is continuously updated.

Cree Mineral Exploration Board 2017

Youcef Larbi

Reggie Mark

Marlene MacKinnon



CONTENTS

1. OVERVIEW	3
1.1. History of Mineral Exploration in James Bay (Eeyou Istchee).....	3
1.2. Geology of Eeyou Istchee.....	3
1.3. Highlights	6
1.4. Number of projects by substance: Comparison of 2016 and 2017	11
2. OBJECTIVES.....	13
2.1. Objectives of the CMEB.....	13
2.2. Objectives of this report	13
11. WHAPMAGOOSTUI FIRST NATION TRAPLINES	15
11.1. Exploration activity and mineral resources potential	15
11.2. Highlights	15
11.3. Number of projects by substance.....	15
11.4. Mineral exploration activity on Whapmagoostui traplines (Not all companies do exploration work on their claims. Orange indicates that the active claims are on Category II Land.).....	17
12. DIRECTORY OF MINING COMPANIES IN EEYOU ISTCHEE.....	21
13. REFERENCES	33
ANNEX 1. LIST OF ACRONYMS AND ABBREVIATIONS	36
ANNEX 2. COMPANY PRESS RELEASES USED IN THIS REPORT.....	40
EXPLORATION ACTIVITY CHISASIBI TRAPLINES	43
EXPLORATION ACTIVITY EASTMAIN TRAPLINES	44
EXPLORATION ACTIVITY MISTISSINI TRAPLINES.....	47
EXPLORATION ACTIVITY NEMASKA TRAPLINES	50
EXPLORATION ACTIVITY OUJE-BOUGOUMOU TRAPLINES	52
EXPLORATION ACTIVITY WASKAGANISH TRAPLINES	55
EXPLORATION ACTIVITY WASWANIPI TRAPLINES	57
EXPLORATION ACTIVITY WEMINDJI TRAPLINES	64
EXPLORATION ACTIVITY WHAPMAGOOSTUI TRAPLINES	68



1. OVERVIEW

1.1. History of Mineral Exploration in James Bay (Eeyou Istchee)

Mineral exploration in Eeyou Istchee has been the preoccupation (and occupation) of prospectors and mining companies for more than a century. The richness of the territory in terms of precious and base metals and recently in diamonds continues to increase yearly.

Historically, exploration has been mostly for precious and base metals, uranium and iron. Exploration intensity has always been influenced by the economic value of the minerals targeted. The Goldcorp Inc. Roberto mineralized system in the Opinaca Reservoir area (Wemindji-Eastmain section) has evolved as one of the most significant gold discoveries in Québec in recent years. The continuously positive exploration results obtained from this site prompt other companies to stake claims in the area.

Eeyou Istchee is gaining prominence as one of Canada's most important regions for mineral exploration. The Opinaca Reservoir has potential for being a major gold mining camp. The Otish Mountains area is very promising for possible diamond, gold, uranium and molybdenum exploitation. The Nemaska area has potential for lithium exploitation.

These diamond, gold and lithium discoveries and especially the official opening of the RENARD diamond mine by Stornoway Diamond Corp. in October 2016, place Eeyou Istchee at the forefront of mineral exploration and exploitation in northern Quebec.

1.2. Geology of Eeyou Istchee

James Bay Cree traplines mostly overlie the Superior geological province. A few Mistissini traplines are located on the Grenville geological province. The geology that follows is general in nature. The reader is invited to consult references listed or company websites for more comprehensive information.

The Superior Province forms the core of the continent of North America and represents the mining heartland of Canada. In Quebec, the Superior hosts the Abitibi, Matagami and Chibougamau mining camps. The Kapuskasing uplift represents a 500 kilometre long fault-bounded structure that divides the Superior Province into western and eastern halves (Percival and West, 1994). The Superior Province is further divided into domains, subprovinces, terranes



and complexes. This report follows nomenclature of tectonic elements put forth in reports by Hocq (1994) and Percival (2007).

Eeyou Istchee is located on the eastern Superior Province. Cree traplines overlies seven divisions of the Superior Province. These are from north to south:

- The Bienville Subprovince (Hocq and Percival)
- The La Grande Subprovince (Hocq and Percival)
- The Ashuanipi Complex (Percival) or Subprovince (Hocq)
- The Opinaca Subprovince (Hocq and Percival)
- The Nemiscau Subprovince (Hocq)
- The Opatica Subprovince (Hocq and Percival)
- The Abitibi Subprovince (Hocq) or Terrane (Percival)

These subprovinces are mostly made up of volcano-plutonic and sedimentary assemblages intruded by granitoids. They are transected by E-W to WNW-ESE and NE-SW-trending shear zones metamorphosed to (in the centre) the greenschist facies and (near their borders) to the upper amphibolite facies (Hocq, M., 1994).

The Bienville Subprovince (**on which the Whapmagoostui and Chisasibi communities and traplines are located**) is a plutonic assemblage occupying the southern part of the northern Superior province. It is composed mainly of migmatized orthogneiss ranging from tonalitic to granodioritic in composition, with enclaves of supracrustal (iron formation, paragneiss, metavolcanic rock) and plutonic (ultramafic) rocks intruded by synkinematic granodioritic to tonalitic plutons and by late biotite granites (Perreault and Moorehead, 2003). This subprovince also contains volcano-sedimentary belts, such as the Lac Fagnant Belt, metamorphosed to the amphibolite facies (Perreault and Moorehead, 2003). Plutonic rocks of the Bienville Subprovince intrude the northern margin of the La Grande Subprovince and mark a transition to dominantly granitic rocks to the north (Percival, 2007).

The La Grande Subprovince (**on which the Wemindji and Eastmain communities and traplines as well as some Chisasibi traplines are located**) is made up primarily of volcano-plutonic rocks and includes the La Grande Volcano-sedimentary Belt (LGVB). The LGVB runs parallel to the Wemindji-Caniapiscau structural Corridor. It consists of mafic to felsic volcanic rocks, interstratified with metasediments and oxide-facies or magnetite iron formations and hosts numerous known mineral occurrences. Scattered throughout the area are komatiitic flows and ultramafic intrusions which locally host Ni-Cu±PGE and Cr mineralization. In the west, the clastic Apple formation, which hosts uranium-gold occurrences, unconformably overlies Mesoarchean basement rocks (3.33-2.79 Ga) (Roscoe and Donaldson, 1988). The Venus belt in the northeast contains Ni-Cu-PGE showings (Gosselin and Simard, 2001). The Eastmain sector



contains younger volcanic rocks (2.75-2.70 Ga) characterized by porphyry and other magmatic mineralization (Percival, 2007). The multiphase Meso to Neoproterozoic tonalitic basement associated to the Langelier Complex is overlain by autochthonous to para-autochthonous volcano-sedimentary sequences of the Yasinski Group and Ekomiak Formation.

The Ashuanipi Complex or Subprovince (**on which some Chisasibi and Mistissini traplines are located**) consists of high-grade metamorphic and plutonic rocks (Percival et al., 1992). Early sedimentary and volcanic rocks were intruded by a ca. 2.725 Ga tonalite-diorite suite (Percival et al., 2003), then deformed and metamorphosed to granulite facies and subsequently intruded by orthopyroxene-bearing diatexite (Percival, 1991), granite, granodiorite, and syenite (Leclair et al., 2004). Mineralization is restricted to small, high-grade gold showings in iron formation and skarns (Moritz and Chevé, 1992; Lapointe and Chown, 1993; Chevé and Brouillette, 1995). The occurrences are unusual in their setting in a granulite-facies terrane (Percival, 2007).

The Opinaca Subprovince (**on which some Mistissini and Wemindji traplines are located**) consists of metagreywacke, derived migmatite, and granite. Polydeformed schists occur at the belt margins, whereas the interior portions are metamorphosed to amphibolite and granulite facies (Percival, 2007). The northern boundary with the La Grande Subprovince is a faulted stratigraphic contact (Goutier et al., 2002). The supracrustal rocks are cut by the Broadback River granite (Davis et al., 1994). Mineralization in the Opinaca Subprovince includes rare-metal occurrences within peraluminous granites and associated pegmatites (Goutier et al., 2002).

The Nemiscau Subprovince (**on which the Waskaganish and Nemaska communities and traplines as well as some Eastmain traplines are located**) is made up mainly of metasedimentary rocks (Card and Ciesielski, 1986). The northern limit follows the contacts of the Lower Eastmain River volcanic belt (Franconi, 1978, Hocq, 1994). Hocq (1994) divides the Nemiscau Subprovince into the Champion Lake plutonic terrane and a metasedimentary terrane subdivided into three domains: the N-1 (northern part), N-2 (central part), and N-3 (southern part).

The Opatica Subprovince (**on which the Mistissini community and traplines as well as some Nemaska, Ouje-Bougoumou, Waskaganish and Waswanipi traplines are located**) is a predominantly metaplutonic domain adjacent to the northern boundary of the Abitibi Terrane and consists of units ranging from tonalite, through tonalite-granodiorite, to granite and pegmatite (Benn et al., 1992; Sawyer and Benn, 1993; Davis et al., 1994b). Polyphase deformation includes early, west-verging shear zones, overprinted by south-verging structures (Sawyer and Benn, 1993). The Frotet-Evans-Troilus greenstone Belt has showings including Cu-Au veins, volcanogenic massive sulphide, iron formation, and intrusion-hosted Ni-Cu (Gosselin, 1996). The Paleoproterozoic dolomitic Mistassini Group and clastic Otish Group of sedimentary rocks



forming the Mistassini Basin and Otish Basin respectively unconformably overlie the Superior Province rocks.

The Abitibi Subprovince (**on which the Ouje-Bougoumou and Waswanipi communities and traplines are located**) is among the richest Archean greenstone belts in the world. It contains numerous granitoid intrusions and volcanic and sedimentary belts oriented roughly E-W. Volcanic units consist of ultramafic to mafic, mafic, or mafic to felsic assemblages. The volcanic assemblages are separated by narrow bands of sedimentary rocks generally composed of clastic units. Several E-W to NW-SE oriented major reverse or normal faults, NE-trending sinistral faults and SE-trending dextral faults transect the Abitibi Belt.

In the James Bay region, strong positive magnetic anomalies are generally associated with iron formations (Houle, 2003). In these formations, disseminated sulphides may be detected from electromagnetic or induced polarization anomalies. In geochemistry, particularly in humus surveys, the most useful indicator elements for this type of mineralization are gold and arsenic (Houle, 2003). Houle states that fold hinges and transverse or longitudinal deformation zones affecting these iron formations are favourable sites for gold remobilization and local enrichment. Consequently, all iron formations located along the contact between major lithostratigraphic domains (sedimentary-volcanic) remain prime targets for the discovery of high-grade gold deposits.

1.3. Highlights

Exploration activities in 2017 show exciting finds and significant increases in potential for diamond, gold, iron, lithium, base metals and rare metals on Eeyou Istchee. Some exploration projects have progressed to advanced stages of exploration, others to stages of development and Quebec's first diamond mine was officially opened in Eeyou Istchee.

DIAMONDS:

➤ .

GOLD:

- **BALMORAL RESOURCES LTD.** intersects 4.36 g/t gold over 6.43 metres on the MARTINIÈRE project on Waskaganish Trapline A-04.
 - Intersects 78.15 metres grading 1.65 g/t gold including 17.00 metres grading 4.50 g/t gold.
 - Intersects 10.51 g/t gold over 5.80 metres.
 - Intersects 3.24 g/t gold over 41.95 metres including 6.30 g/t gold over 11.58 metres.



- Intersects 6.25g/t gold over 11.66 metres including 12.48 g/t gold over 5.47 metres.
- **BEAUFIELD RESOURCES INC.** intersects 33.6 g/t gold on the URBAN project on Waswanipi traplines W-25A, W-25B and 19.
- **CANADA STRATEGIC METALS INC.** and **MATAMEC EXPLORATIONS INC.** intersect 1.70 g/t gold over 30 metres including 4.26 g/t gold over 4.5 metres on Wemindji traplines VC-20 and VC-21.
- **CHIBOUGAMAU INDEPENDENT MINES INC.** Samples up to 19.71 g/t gold, 289.2 g/t silver, 16.79% zinc and 17.75% lead on the BERRIGAN project on Ouje-Bougoumou Trapline O-55.
- **DIOS EXPLORATION INC.** intersects up to 10.3 g/t gold over 1 metre on the Heberto gold discovery at the AU33 project on Eastmain Trapline RE-01.
- **EASTMAIN RESOURCES INC.** intersects up to 8.31 g/t gold over 13.3 metres on the CLEARWATER project on Eastmain Trapline VC-37.
 - Intersects 14.1 g/t gold over 6.2 metres.
 - Intersects 43.7 g/t gold over 2.0 metres.
 - Intersects 30.6 g/t gold over 4.9 metres including 254 g/t gold over 0.5 metre.
 - Intersects 7 g/t gold over 36 metres and 15 g/t gold over 6 metres.
 - Files technical report.
- **EASTMAIN RESOURCES INC.** intersects 219 g/t gold, 153. g/t silver and 2.54% copper over 2.0 metres at the EASTMAIN MINE project on Mistissini Trapline M-16.
 - Samples up to 25.97 g/t gold over 2.2 metres including 55.70 g/t gold over 0.7 metres.
 - Samples 45.1 g/t gold, 26.5 g/t silver and 0.61% copper over 2.0 metres including 85.5 g/t gold, 48.0 g/t silver and 1.09% copper over 1 metre.
- **EASTMAIN RESOURCES INC., AZIMUT EXPLORATION INC.** and **OPINACA MINES LTD.** sample up to 50.37 g/t gold over 3.5 metres and intersect 8.88 g/t gold over 2.5 metres on the ELEONORE SOUTH project on Wemindji Trapline VC-29.
 - Intersect 1.14 g/t gold over 6.0 metres, 1.58 g/t gold over 12.0 metres including 4.67 g/t gold over 2.7 metres, 76.1 g/t gold over 1.55 metres and sample 247 g/t gold from a boulder.
 - Intersect 4.9 g/t gold over 45 metres.
 - Intersects 6.61 g/t gold over 3.0 metres.
- **METANOR RESOURCES INC.** intersects 13.1 g/t gold over 3.8 metres at the BACHELOR MINE project on Waswanipi traplines W-21 and W-24A.
 - Intersects 8.6 g/t gold over 13.9 metres.
 - Intersects 9.6 g/t gold over 7.6 metres.
- **METANOR RESOURCES INC.** intersects up to 9.9 g/t gold over 4 metres at the BARRY project on Waswanipi traplines W-25, W-25B and 19.



- Intersects 7.1 g/t gold over 8.2 metres.
- Intersects 27.8 g/t gold over 3 metres.
- **MIDLAND EXPLORATION INC.** samples up to 22.6 g/t gold on the LASALLE property on Mistissini Trapline M-01A
- **OPUS ONE RESOURCES INC.** obtains gold grades up to 18.0 g/t over 0.9 metre and 6.2 g/t gold over 1.4 metres on the GRIZZLY property on Waswanipi Trapline W-21.
- **OSISKO MINING INC.** intersects 6.1 g/t gold over 35.4 metres at the WINDFALL project on Waswanipi traplines W-25A and W-25B.
 - Intersects 27.6 g/t gold over 3.1 metres.
 - Intersects 65 g/t gold over 5.7 metres.
 - Intersects 47 g/t gold over 2.6 metres.
 - Intersects 6.14 g/t gold over 14.4 metres.
 - Intersects 42.7 g/t gold over 9.0 metres.
 - Intersects 12.7 g/t gold over 5.4 metres.
 - Intersects 9.76 g/t gold over 7.3 metres.
 - Intersects 64.3 g/t gold over 2.3 metres.
 - Intersects 15.6 g/t gold over 5.8 metres.
 - Intersects 8.37 g/t gold over 2.8 metres.
 - Intersects 63.8 g/t gold over 4.4 metres.
 - Intersects 34.1 g/t gold over 4.0 metres.
 - Intersects 19.4 g/t gold over 7.9 metres.
 - Intersects 11.7 g/t gold over 7.7 metres.
 - Intersects 9.01 g/t gold over 9.4 metres.
 - Intersects 97.4 g/t gold over 8.4 metres.
 - Intersects 12.5 g/t gold over 8.5 metres.
 - Intersects 131 g/t gold over 2.0 metres.
 - Intersects 24.9 g/t gold over 31 metres.
 - Intersects 63.2 g/t gold over 7.7 metres.
 - Intersects 379 g/t gold over 2.0 metres.
 - Intersects 53.5 g/t gold over 3.0 metres.
 - Intersects 36.7 g/t gold over 4.0 metres.
 - Intersects 36 g/t gold over 6.9 metres.
 - Intersects 611 g/t gold over 2.0 metres.
 - Intersects 27 g/t gold over 2.7 metres.
 - Intersects 61.8 g/t gold over 2.5 metres.
 - Intersects 39.4 g/t gold over 2.4 metres.
 - Intersects 20.5 g/t gold over 11.6 metres.
 - Obtains transfer of Certificate of Authorization from the MDDELCC for bulk sampling.



- Begins construction of exploration ramp.
- **SIRIOS RESOURCES INC.** intersects 6.2 g/t gold over 26.1 metres at the CHEECHOO project on Wemindji Trapline VC-29.
 - Intersects 11.9 g/t gold over 13.5 metres.
 - Intersects 11.2 g/t gold over 10.6 metres.
 - Samples 23.5 g/t gold over 3.1 metres.
- **TOMAGOLD CORP.** Intersects 15.0 g/t gold, 46.8 g/t silver and 10.4% copper over 2 metres on the OBALSKI property on Ouje-Bougoumou Trapline O-58.
- **TOMAGOLD CORP., IAMGOLD CORP.** and **QUINTO REAL CAPITAL CORP.** intersect 121.67 g/t gold over 3.1 metres on the MONSTER LAKE project on Waswanipi Trapline W-23A.
 - Intersects 80.28 g/t gold over 5.0 metres.
 - Intersects 67.42 g/t gold over 3.5 metres.
- **VANSTAR MINING RESOURCES INC.** and **IAMGOLD CORP.** intersect 3.19 g/t gold over 11.69 metres on the NELLIGAN project on Waswanipi Trapline W-23A and on Ouje-Bougoumou Trapline O-61.
- **YORBEAU RESOURCES INC.** intersects 5.9% zinc, 0.7% copper and 50.9 g/t silver over 20.6 metres including 6.4% zinc, 2.3 g/t gold and 73.3 g/t silver over 6.5 metres on the SCOTT LAKE project on Ouje-Bougoumou traplines O-58 and O-59.

PLATINUM GROUP ELEMENTS:

LITHIUM, RARE EARTH ELEMENTS, RARE METALS:

- **CRITICAL ELEMENTS CORP.** and **LEPIDICO LTD.** intersect up to 2.65% Li₂O over 21 metres on the LEMARE project on Mistissini Trapline M-25 and Nemaska Trapline R-21.
 - Intersect 0.94% Li₂O over 33.7 metres and 2.00% Li₂O over 18.0 metres.
- **CRITICAL ELEMENTS CORP.** submits its Environmental Impact Study for the ROSE lithium-tantalum project on Eastmain Trapline RE-01 to the COMEX and CEEA.
 - Completes a Feasibility Study.
 - Files the NI-43-101 Technical Report for the Feasibility Study.
- **NEMASKA LITHIUM INC.** proceeds with mine construction and produces up to 6.65% Li₂O concentrate from the DMS modular mill at the WHABOUCHI project on Nemaska traplines R-18 and R-20.

COPPER, SILVER, ZINC, LEAD, NICKEL, COBALT, CHROMIUM and MOLYBDENUM:



- **CHIBOUGAMAU INDEPENDENT MINES INC.** Samples up to 19.71 g/t gold, 289.2 g/t silver, 16.79% zinc and 17.75% lead on the BERRIGAN project on Ouje-Bougoumou Trapline O-55.
- **EASTMAIN RESOURCES INC.** intersects 219 g/t gold, 153. g/t silver and 2.54% copper over 2.0 metres at the EASTMAIN MINE project on Mistissini Trapline M-16.
- **MIDLAND EXPLORATION INC.** and **ALTIUS MINERALS CORP.** sample up to 1.07% nickel, 0.24% copper and 0.09% cobalt on the MORIA project on Eastmain Trapline VC-37
- **YORBEAU RESOURCES INC.** intersects 5.9% zinc, 0.7% copper and 50.9 g/t silver over 20.6 metres including 6.4% zinc, 2.3 g/t gold and 73.3 g/t silver over 6.5 metres on the SCOTT LAKE project on Ouje-Bougoumou traplines O-58 and O-59.

IRON, TITANIUM, VANADIUM:

OTHER:

- Granite on the **GRANITE SELECT INC.** claims on Mistissini Trapline M-51A.
- Peat on the **BERGER PEAT MOSS LTD.** Claims on Waskaganish Trapline N-08 and Waswanipi Trapline W-53.

In total on Eeyou Istchee:

- 184 companies hold active claims. Of these, 3 are Cree companies.
- 122 prospectors hold active claims. Of these, 1 is a Cree prospector.

1.4. Number of projects by substance: Comparison of 2016 and 2017

SUBSTANCE	# PROJECTS 2016	# PROJECTS 2017
GOLD	232	242
SILVER	41	38
BASE METALS	120	112
DIAMONDS	15	18
PLATINUM GROUP ELEMENTS	28	26
URANIUM	6	5
LITHIUM	15	18
RARE EARTH ELEMENTS	6	6
RARE METALS	7	7
IRON	7	6

Data based on information made public by companies and are not conclusive.

Some projects are multi-elemental.

Base metals include copper (Cu), nickel (Ni), chromium (Cr), cobalt (Co), molybdenum (Mo), lead (Pb), and zinc (Zn).

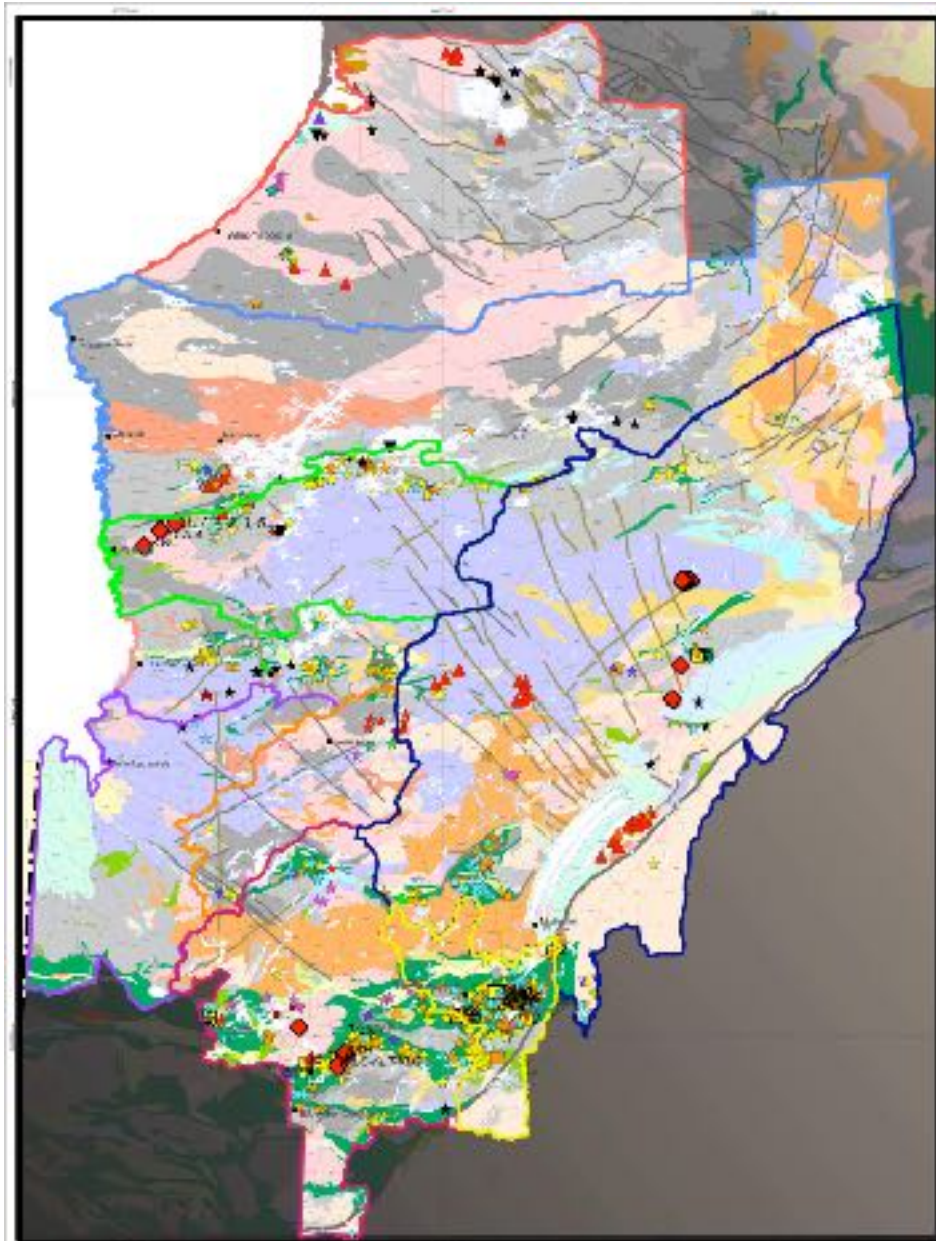
Iron (Fe) includes titanium (Ti) and vanadium (V).

Platinum Group Elements include iridium (Ir), osmium (Os), palladium (Pd), platinum (Pt), rhodium (Rh), and ruthenium (Ru).

Rare metals include beryllium (Be), bismuth (Bi), niobium (Nb), tantalum (Ta), tellurium (Te) and tungsten (W).

Rare Earth Elements include cerium (Ce), dysprosium (Dy), erbium (Er), europium (Eu), gadolinium (Gd), holmium (Ho), lanthanum (La), lutetium (Lu), neodymium, (Nd) praseodymium (Pr), promethium (Pm), samarium (Sm), scandium (Sc), terbium (Tb), thulium (Tm), ytterbium (Yb) and yttrium (Y).

Figure: Geological Map the geology and the territory of each community (CMEB, 2004)





2. OBJECTIVES

2.1. Objectives of the CMEB

The objectives of the CMEB (Cree Mineral Exploration Board) are to:

- Provide the Cree the knowledge and the control of the mining activities In Eeyou Istchee,
- Provide information to individual prospectors and Cree junior mining companies,
- Promote industry interest in mining exploration in Eeyou Istchee in the context of economic development,
- Attract mining companies to the Eeyou Istchee territory.

2.2. Objectives of this report

The objectives of this report are to:

- Compile mineral exploration activity in Eeyou Istchee (James Bay) territory,
- Update the activities of mining companies in Eeyou Istchee,
- Update the development of the mining industry in Eeyou Istchee,
- Outline the mineral potential of Eeyou Istchee.

The information in this report is compiled from information made public by mining companies through press releases and on their websites. Prospectors do not render information public. **N-I** indicates that no information was obtained. **The CMEB invites companies and prospectors to provide information on their projects on Eeyou Istchee thereby assisting us in producing a more complete and exact compilation.** The Cree Nation Government 2015 *Cree Family Traditional Territories in Eeyou Istchee Map* and the *CMEB Interactive Map* (CMEB website) were used to identify trapline numbers and boundaries. The Quebec Ministry of Energy and Natural Resources GESTIM PLUS site is used to locate and identify active claims.

The names of the mining companies and property/project names are in bold capital letters and mineralized zones, target areas, showings and deposits are in italics. Orange colour indicates the active claims are on Category II lands.

For more information, we invite the reader to consult the company websites listed in Section 12 of this report.

This report compiles information on mineral exploration on Eeyou Istchee as per the nine James Bay Cree Communities in alphabetical order and by Trapline number. The report



can be more effectively used as a tool for our readers to identify the holders of active claims in Eeyou Istchee.



11. WHAPMAGOOSTUI FIRST NATION TRAPLINES

11.1. *Exploration activity and mineral resources potential*

The Whapmagoostui traplines are on the Bienville subprovince.

Substances of interest to exploration companies and prospectors include gold (Au), iron (Fe), lead (Pb), silver (Ag), and zinc (Zn).

Number of companies with active claims: 3.

Number of prospectors with active claims: 2.

11.2. *Highlights*

The companies with active claims did not report any exploration highlights.

11.3. *Number of projects by substance*

<i>Substance</i>	<i>Number of projects</i>
Gold	1
Silver	1
Base metals	1
Diamonds	0
Platinum group elements	0
Uranium	0
Lithium	0
Rare earth elements	0
Rare metals	0
Iron	1

Data based on information made public by companies and are not conclusive.

Some projects are multi-elemental.



Base metals include copper (Cu), nickel (Ni), chromium (Cr), cobalt (Co), molybdenum (Mo), lead (Pb), and zinc (Zn).

Iron (Fe) includes titanium (Ti) and vanadium (V).

Platinum Group Elements include iridium (Ir), osmium (Os), palladium (Pd), platinum (Pt), rhodium (Rh), and ruthenium (Ru).

Rare metals include beryllium (Be), bismuth (Bi), niobium (Nb), tantalum (Ta), tellurium (Te) and tungsten (W).

Rare Earth Elements include cerium (Ce), dysprosium (Dy), erbium (Er), europium (Eu), gadolinium (Gd), holmium (Ho), lanthanum (La), lutetium (Lu), neodymium, (Nd) praseodymium (Pr), promethium (Pm), samarium (Sm), scandium (Sc), terbium (Tb), thulium (Tm), ytterbium (Yb) and yttrium (Y).



11.4. Mineral exploration activity on Whapmagoostui traplines (Not all companies do exploration work on their claims. Orange indicates that the active claims are on Category II Land.)

TRAPLINE	COMPANIES/ PROSPECTORS	PROJECTS	SUBSTANCES	ACTIVITY FINDINGS
GW-01 Updated	<i>COMPANIES</i> <i>PROSPECTORS</i>	NO ACTIVE CLAIMS		
GW-02 Updated	<i>COMPANIES</i> NIOCAN INC. OSISKO GOLD ROYALTIES LTD. <i>PROSPECTORS</i>	GREAT WHALE IRON LAC FAGNANT	IRON GOLD	Mag-EM(A) (2012-13) NI
GW-03 Updated	<i>COMPANIES</i> <i>PROSPECTORS</i>	NO ACTIVE CLAIMS		
GW-04 Updated	<i>COMPANIES</i> <i>PROSPECTORS</i>	NO ACTIVE CLAIMS		
GW-05 Updated	<i>COMPANIES</i> <i>PROSPECTORS</i>	NO ACTIVE CLAIMS		
GW-06 Updated	<i>COMPANIES</i> <i>PROSPECTORS</i>	NO ACTIVE CLAIMS		
GW-07 Updated	<i>COMPANIES</i> <i>PROSPECTORS</i>	NO ACTIVE CLAIMS		
GW-08 Updated	<i>COMPANIES</i> NIOCAN INC. <i>PROSPECTORS</i> ROBERT, MICHEL	GREAT WHALE IRON	IRON	Mag-EM(A) (2012-13)

GW-09 Updated	<i>COMPANIES</i> NIOCAN INC. <i>PROSPECTORS</i>	GREAT WHALE IRON	IRON	Mag-EM(A) (2012-13)
GW-10 Updated	<i>COMPANIES</i> NIOCAN INC. <i>PROSPECTORS</i>	GREAT WHALE IRON	IRON	Mag-EM(A) (2012-13)
GW-11 Updated	<i>COMPANIES</i> <i>PROSPECTORS</i>	NO ACTIVE CLAIMS		
GW-12 Updated	<i>COMPANIES</i> <i>PROSPECTORS</i>	NO ACTIVE CLAIMS		
GW-13 Updated	<i>COMPANIES</i> <i>PROSPECTORS</i>	NO ACTIVE CLAIMS		
GW-14 Updated	<i>COMPANIES</i> <i>PROSPECTORS</i>	NO ACTIVE CLAIMS		
GW-15 Updated	<i>COMPANIES</i> <i>PROSPECTORS</i>	NO ACTIVE CLAIMS		
GW-16 Updated	<i>COMPANIES</i> <i>PROSPECTORS</i> LAUZIER, STEVEN			
GW-17 Updated	<i>COMPANIES</i> <i>PROSPECTORS</i>	NO ACTIVE CLAIMS		

GW-18 Updated	<i>COMPANIES</i> NIOCAN INC. <i>PROSPECTORS</i>	GREAT WHALE IRON	IRON	Mag-EM(A) (2012-13)
GW-19 Updated	<i>COMPANIES</i> NIOCAN INC. <i>PROSPECTORS</i>	GREAT WHALE IRON	IRON	Mag-EM(A) (2012-13)
GW-20 Updated	<i>COMPANIES</i> <i>PROSPECTORS</i>	NO ACTIVE CLAIMS		
GW-21 Updated	<i>COMPANIES</i> NOUVEAU MONDE GRAPHITE INC. <i>PROSPECTORS</i>	MAC'S LEAD	LEAD, ZINC, SILVER	Produced a NI 43-101 technical report. (2013)
GW-22 Updated	<i>COMPANIES</i> <i>PROSPECTORS</i>	NO ACTIVE CLAIMS		
GW-23 Updated	<i>COMPANIES</i> <i>PROSPECTORS</i>	NO ACTIVE CLAIMS		
GW-24 Updated	<i>COMPANIES</i> <i>PROSPECTORS</i>	NO ACTIVE CLAIMS		
GW-25 Updated	<i>COMPANIES</i> <i>PROSPECTORS</i>	NO ACTIVE CLAIMS		



12. DIRECTORY OF MINING COMPANIES IN EYYOU ISTCHEE



#	COMPANY	CITY, PROV/ STATE	PHONE	EMAIL	WEBSITE
1	1039244 BC LTD.	VANCOUVER, BC			
2	2736-1179 QUEBEC INC.	CHICOUTIMI, QC	418-673-7606		
3	3457265 CANADA INC.	GATINEAU, QC			
4	9103-4173 QUEBEC INC.	CHICOUTIMI, QC			
5	9154-4312 QUEBEC INC.	EVAIN, QC			
6	9248-7792 QUEBEC INC. (QUEBEC MINERAL PROPERTIES INC.)	TROIS RIVIÈRES, QC			
7	9257-1256 QUEBEC INC.	TROIS RIVIÈRES, QC			
8	ABE RESOURCES INC.	VAL-D'OR, QC	819-874-6200	info@ressourcesabe.ca	www.ressourcesabe.ca
9	ACTIVE GROWTH CAPITAL INC.	VAL-D'OR, QC	819-825-0001		
10	ACTUS MINERALS CORP.	VANCOUVER, BC	604-678-9639	info@actusminerals.com	www.actusminerals.com
11	ALBERT MINING INC.	MONTREAL, QC			
12	ALEXANDRIA MINERALS CORP. (acquired Murgor Resources Inc.)	TORONTO, ON	416-363-9372	ewens@azx.ca	www.azx.ca
13	ALTIUS MINERALS CORP.	SAINT-JOHNS, NL			
14	ALTO VENTURES LTD.	VANCOUVER, BC	604-689-2599	info@altoventures.com	www.altoventures.com
15	AMEX EXPLORATION INC.	MONTREAL, QC	514-866-8209	info@amexexploration.com	www.amexexploration.com
16	AMSECO EXPLORATION LTD.	MONTREAL, QC	514-284-5111	info@amsecoexploration.com	www.amsecoexploration.com
17	AREVA RESOURCES CANADA INC.	SASKATOON, SK	306-343-4637	publicrelations@areva.ca	www.areva.com
18	ARGONAUT GOLD INC. (acquired Prodigy Gold Inc.)	RENO, NEVADA, USA	775-284-4422	info@argonautgold.com	www.argonautgold.com

19	AUGYVA MINING RESOURCES INC.	MONTREAL, QC	416-309-2197	AugyvaMiningResources@gmail.com	www.augyvamining.com
20	AZIMUT EXPLORATION INC.	LONGUEUIL, QC	450-646-3015	info@azimut-exploration.com	www.azimut-exploration.com
21	BACHMAN LITHIUM CORP.	VANCOUVER, BC			
22	BALMORAL RESOURCES LTD.	VANCOUVER, BC	604-638-3664	mann@balmoralresources.com	www.balmoralresources.com
23	BEAUFIELD RESOURCES INC.	MONTREAL, QC	514-842-3443	info@beaufield.com	www.beaufield.com
24	BEAUROX MINES LTD.	TORONTO, ON	807-875-2876		
25	BERGER PEAT MOSS LTD.	SAINT-MODESTE, QC	418-862-4462	marc@berger.ca	www.berger.ca
26	BLACKROCK METALS INC.	MONTREAL, QC	514-316-7281	nlaurin@blackrockmetals.com	www.blackrockmetals.com
27	BOLD VENTURES INC.	TORONTO, ON	416-864-1456	info@boldventuresinc.com	www.boldventuresinc.com
28	BONTERRA RESOURCES INC.	VANCOUVER, BC	604-678-5308	info@bonterresources.com	www.bonterresources.com
29	BROADBACK RESOURCES INC.	L'ASCENCION, QC	819-275-2224		
30	CANADA STRATEGIC METALS INC. (formerly Canada Rare Earths Inc.)	MONTREAL, QC	514-904-1496	ir@canad战略icmetals.com	www.canad战略icmetals.com
31	CANADIAN MALARTIC CORP.	TORONTO, ON			
32	CANADIAN METALS INC.	MONTREAL, QC	418-717-2553	sleblanc@canadianmetalsinc.com	www.canadianmetalsinc.com
33	CANADIAN MINING HOUSE (9219-8845 QUEBEC INC.)	LONGUEUIL, QC	450-468-0488		
34	CANUCK EXPLORATION INC.	LA MOTTE, QC			
35	CARAT EXPLORATION INC.	VAL-D'OR, QC	819-738-7513	carat@shaw.ca	www.caratexploration.com website not active
36	CARDIFF ENERGY CORP.	NORTH VANCOUVER, BC	604-505-4380	info@cardiffenergy.com	www.cardiffenergy.com

37	CARTIER RESOURCES INC.	VAL-D'OR, QC	819-874-1331	info@ressourcescartier.com	www.ressourcescartier.com
38	CARTOGEOGRAPHIX INC.	BOUCHERVILLE, QC			
39	CBAY MINERALS INC. (7591802 CANADA INC.)	TORONTO, ON	416-626-0470		www.nuinsco.ca
40	CENTRAL ASIA GOLDFIELDS CORP.	TORONTO, ON	416-867-9087		
41	CENTURY GLOBAL COMMODITIES CORP. (formerly Century Iron Mines Corp.)	TORONTO, ON	416-977-3188	bob.leshchyshen@centuryiron.com	www.centuryiron.com
42	CHALICE GOLD MINES (QUEBEC) INC.	TORONTO, ON			
43	CHIBOUGAMAU INDEPENDENT MINES INC.	ROUYN-NORANDA, QC	819-797-5242	info@chibougamaumines.com	www.chibougamaumines.com
44	CHIMATA GOLD CORP.	SURREY, BC	604-592-6881	info@chimatagoldcorp.com	www.chimatagoldcorp.com
45	CORNER BAY RESOURCES INC.	VANCOUVER, BC			
46	COULON MINES INC. (subsidiary of Osisko Exploration James Bay Inc.)	QUEBEC, QC	418-694-9832	info@minesvirginia.com	www.minesvirginia.com
47	CRITICAL ELEMENTS CORP. (formerly First Gold Exploration Inc.)	MONTREAL, QC	514-904-1496	president@cecorp.ca	www.cecorp.ca
48	DETOUR GOLD CORP.	TORONTO, ON	416-304-0800	info@detourgold.com	www.detourgold.com
49	DIAGNOS INC.	BROSSARD, QC	450-678-8882	info@diagnos.com	www.diagnos.com
50	DIANOR RESOURCES INC.	VAL-D'OR, QC	819-825-7090	info@dianor.com	www.dianor.com website not active
51	DIOS EXPLORATION INC.	MONTREAL, QC	514-483-5149	mgirard@diosexplo.com	www.diosexplo.com
52	DURANGO RESOURCES INC.	VANCOUVER, BC	604-428-2900	info@durangoresourcesinc.com	www.durangoresourcesinc.com
53	EASTMAIN RESOURCES INC.	ORANGEVILLE, ON	519-940-4870	info@eastmain.com	www.eastmain.com

54	ED EXPLORATION INC.	L'ANGE GARDIEN, QC			
55	ELORO RESOURCES INC.	TORONTO, ON	416-868-9168	info@elororesources.com	www.elororesources.com
56	ENFORCER GOLD CORP. (formerly Natan Resources Ltd.)	KELOWNA, BC	778-233-0902		
57	EVERTON RESOURCES INC.	OTTAWA, ON	613-241-2332	andre@evertonresources.com	www.evertonresources.com
58	EVOLVING GOLD CORP.	VANCOUVER, BC	604-685-6375	info@evolvinggold.com	www.evolvinggold.com
59	EXPLOR RESOURCES INC.	ROUYN-NORANDA, QC	819-797-4630	info@explorresources.com	www.explorresources.com
60	EXPLORATEURS INNOVATEURS DE QUÉBEC INC.	QUEBEC, QC	418-877-4249	edwingaucher@videotron.ca	www.ex-in.ca
61	FANCAMP EXPLORATION LTD.	BURNABY, BC	604-434-8829	pjlexpl@videotron.ca	www.fancampexplorationltd.ca
62	FIELDEX EXPLORATION INC.	ROUYN-NORANDA, QC	819-762-0609	info@fieldexploration.com	www.fieldexploration.com
63	FIRST MINING FINANCE CORP. (acquired Clifton Star Resources Inc.)	VANCOUVER, BC	604-639-8848	info@firstminingfinance.com	www.firstminingfinance.com
64	FOCUS GRAPHITE INC.	OTTAWA, ON	613-691-1091	geonomo@focusgraphite.com	www.focusgraphite.com
65	FQM (AKUBRA) INC. (acquired INMET Mining Corporation)	TORONTO, ON	416-361-6400	investor@inmetmining.com	www.inmetmining.com
66	GALAXY RESOURCES INC. / GALAXY LITHIUM (ONTARIO) INC.	WEST PERTH, AU	618-9215-1700	web_queries@computershare.com.au	www.galaxyresources.com.au
67	GAMUT EXPLORATION CORP.	VANCOUVER, BC			
68	GARNET GOLD INC.	LONDON, ON	519-657-4535		
69	GENESIS METALS CORP.	VANCOUVER, BC	604-646-8356	js@genesismetalscorp.com	www.genesismetalscorp.com
70	GENIUS PROPERTIES LTD. (formerly Synergy Acquisition Corp.)	MONTREAL, QC	418-717-2553	sleblanc@geniusproperties.ca	www.geniusproperties.ca

71	GEO-ENVIROFOR INC.	LAC-ASHUAPMUSHUAN, QC			
72	GÉOLOGUES AEROPORTES INC.	ROUYN-NORANDA, QC	819-762-4558		
73	GEOMEGA RESOURCES INC.	ST-LAMBERT, QC	450-465-0099	info@ressourcesgeomega.ca	www.ressourcesgeomega.ca
74	GEONOVA EXPLORATION INC.	CHIBOUGAMAU, QC			
75	GEOTEST CORP.	NEPEAN, ON			
76	GL GEOSERVICES INC.	ROUYN-NORANDA, QC	819-762-2223		
77	GLENCORE CANADA CORP. (formerly Xstrata Canada Corp.)	TORONTO, ON	416-775-1400	info@glencorexstrata.com	www.glencorexstrata.com
78	GLOBEX MINING ENTERPRISES INC.	ROUYN-NORANDA, QC	819-797-5242	dstoch@globexmining.com	www.globexmining.com
79	GOLDCORP INC.	VANCOUVER, BC	604-696-3000	info@goldcorp.com	www.goldcorp.com
80	GOLDEN VALLEY MINES LTD.	VAL-D'OR, QC	819-824-2808	info@goldenvalleymines.com	www.goldenvalleymines.com
81	GOLDSTAR MINERALS INC.	MONTREAL, QC	514-591-8058	bmoreau@goldstarminerals.com	www.goldstarminerals.com
82	GRANITE SELECT INC.	QUEBEC, QC			
83	GRANIZ MONDAL INC.	LEVIS, QC			
84	GREG EXPLORATION INC.	ROUYN-NORANDA, QC		steve@gregx.ca	www.gregexploration.com
85	HARFANG EXPLORATION INC.	MONTREAL, QC			
86	HECLA QUEBEC INC.	VANCOUVER, BC	604-682-6201	info@hecla-mining.com	www.hecla-mining.com
87	HINTERLAND METALS INC.	VAL-D'OR, QC	819-874-8182	info@hinterlandmetals.com	www.hinterlandmetals.com
88	HONEY BADGER EXPLORATION INC.	TORONTO, ON	416-364-7029	info@honeybadgerexp.com	www.honeybadgerexp.com
89	IAMGOLD CORP.	LONGUEUIL, QC	450-677-0040	info@iamgold.com	www.iamgold.com

90	IMETAL RESOURCES INC.	VANCOUVER, BC	604-739-9713	info@imetalresources.ca	www.imetalresources.ca
91	IONIC POWER CORP.				
92	JDG MINERAL RESOURCES LTD.	ROUYN-NORANDA, QC			
93	JESSIE RESOURCES INC. (subsidiary of Legault Metal Inc.)	TRECESSION, QC	819-732-8818	Info@legaultmetal.com	www.legaultmetal.com
94	JIEN NUNAVIK MINING EXPLORATION LTD. (formerly Canadian Royalties Inc.)	POINTE CLAIRE, QC	514-505-3521	info@jnmel.com	www.jnmel.com
95	LANDORE RESOURCE INC.	THUNDER BAY, ON	807-623-3770	contact@landore.com	www.landore.com
96	LASALLE EXPLORATION CORP.	VANCOUVER, BC	604-647-3966	dinnes@lasalleexploration.ca	www.lasalleexploration.ca
97	LAURIER GOLD INC.	VANCOUVER, BC	778-386-0774	contact@lauriergold.com	www.lauriergold.com
98	LEPIDICO LTD.	WEST LEEDERVILLE, AUSTRALIA	61-(08)-9363-7800	info@lepidico.com	www.lepidico.com
99	LOMIKO METALS INC.	SURREY, BC	778-228-1170	info@lomiko.com	www.lomiko.com
100	MADEX EXPLORATION INC.	AMOS, QC			
101	MAJESCOR RESOURCES INC.	ORLEANS, ON	418-770-1595	dan@majescor.com	www.majescor.com
102	MATAMEC EXPLORATIONS INC.	MONTREAL, QC	514-844-5252	info@matamec.com	www.matamec.com
103	MEGASTAR DEVELOPMENT CORP.	VANCOUVER, BC	604-669-9330	info@megastardevelopment.com	www.megastardevelopment.com
104	METALEX VENTURES LTD.	KELOWNA, BC	250-860-8599	investorinfo@metalexventures.com	www.metalexventures.com
105	METALS TECH LTD.	SUBIACO, AUSTRALIA			
106	METANOR RESOURCES INC.	VAL-D'OR, QC	819-825-8678	info@metanor.ca	www.metanor.ca
107	MIDLAND EXPLORATION INC.	MONTREAL, QC	450-472-5977	gino.roger@midlandexploration.com	www.midlandexploration.com



108	MOIS EXPLORATION ENTERPRISES INC.	MONTREAL, QC			
109	MULTI-RESSOURCES BOREAL INC.	CHICOUTIMI, QC	418-698-1652	frank@mrboreal.com	www.mrboreal.com
110	NATIVES EXPLORATION SERVICES	OUJE-BOUGOUMOU, QC	418-745-2632		
111	NEMASKA LITHIUM INC.	QUEBEC, QC	418-704-6038	info@nemaskalithium.com	www.nemaskalithium.com
112	NIEVEX GEOCONSEIL INC.	VAL-D'OR, QC			
113	NIMSKEN CORPORATION INC.	OUJE-BOUGOUMOU, QC	418-745-2632		
114	NIOBAY METALS INC. (formerly MDN Inc.)	MONTREAL, QC	514-866-6500	info@niobaymetals.com	www.niobaymetals.com
115	NIOCAN INC.	MONTREAL, QC	514-288-8506	info@niocan.com	www.niocan.com
116	NIOGOLD MINING CORPORATION	LANGLEY, BC	604-856-9887	miverson@niogold.com	www.niogold.com
117	NORTH AMERICAN EXPLORATION LTD.	KAYSVILLE, UT, USA	801-544-3421		www.nae-exploration.com
118	NORTHERN SUPERIOR RESOURCES INC.	SUDBURY, ON	705-525-0992	tmorris@nsuperior.com	www.nsuperior.com
119	NOUVEAU MONDE GRAPHITE INC.	L'ANGE-GARDIEN, QC	819-923-0333	edesaulniers@nouveaumonde.ca	www.nouveaumonde.ca
120	NOVX21 INC. (formerly Pro-Or Mining Resources Inc.)	MONTREAL, QC	514-506-9121	info@novx21.com	www.novx21.com
121	NQ EXPLORATION INC.	LAVAL, QC	514-206-7727	info@nqexploration.com	www.nqexploration.com
122	NUNAVIK NICKEL MINES LTD.	VAL-D'OR, QC	819-824-2808	info@nunaviknickelmines.com	www.nunaviknickelmines.com
123	NYRSTAR NV	ZURICH, SWITZERLAND	+41 (0)44 7458100	info@nyrstar.com	www.nyrstar.com
124	OPINACA MINES LTD.	ROUYN-NORANDA	819-865-2062	info@goldcorp.com	www.goldcorp.com



125	OPUS ONE RESOURCES INC. (formerly GFK Resources Inc.)	UPPER TANTALLON, NS	902-826-1579	info@gfkresources.com	www.gfkresources.com
126	ORACLE MINING CORP.	VANCOUVER, BC	604-689-9282	info@oracleminingcorp.com	www.oracleminingcorp.com
127	ORBITE TECHNOLOGIES INC.	ST-LAURENT, QC	514-744-6264	info@orbitetech.com	www.orbitetech.com
128	OSISKO GOLD ROYALTIES LTD.	MONTREAL, QC	514-940-0670	elevesque@osiskogr.com	www.osiskogr.com
129	OSISKO JAMES BAY SENC	MONTREAL, QC	514-940-0670	elevesque@osiskogr.com	www.osiskogr.com
130	OSISKO MINES INC.				
131	OSISKO MINING INC. (formerly Oban Mining Corp.)	TORONTO, ON	416-848-9504	info@obanmining.com	www.obanmining.com
132	OTISH MINERALS INC. (subsidiary of Eros Resources Corp.)	VANCOUVER, BC	604-688-8115	info@erosresourcecorp.com	www.erosresourcecorp.com
133	PERILYA CANADA LTD.	PERTH, AUSTRALIA	618-6330-1000	paul.arndt@perilya.com.au	www.perilya.com.au
134	PINE POINT MINING LTD. (formerly Darnley Bay Resources Ltd.)	TORONTO, ON	416-567-2440		
135	PITCHBLACK RESOURCES INC.	TORONTO, ON	416-861-5903	smoore@forbesmanhattan.com	www.pitchblackresources.com
136	PRO MINERALS INC.	VANCOUVER, BC	604-608-6068	w.adrian@promineralsinc.com	www.promineralsinc.com
137	PROBE METALS INC. (merged with Adventure Gold Inc.)	TORONTO, ON	416-777-6703	kwilloughby@probemetals.com	www.probetmetals.com
138	PUF VENTURES INC.	VANCOUVER, BC	604-678-2531	info@pufventures.com	www.pufventures.com
139	PWP ENTERPRISES INC.	TORONTO, ON			
140	QUINTO REAL CAPITAL CORP.	LAVAL, QC	450-681-7744		
141	RESSOURCES D. VILLENEUVE INC.	ST-EUSTACHE, QC			

14 2	RESSOURCES FRANCNORD INC.	SAINT-FULGENCE, QC			
14 3	REVOLVER RESOURCES INC.	VANCOUVER, BC	778-331-2025	info@revolverresources.com	www.revolverresources.com
14 4	SAINT-JEAN CARBON INC.	OAKVILLE, ON	905-844-1200	info@saintjeancarbon.com	www.saintjeancarbon.com
14 5	SANDSTORM GOLD LTD.	VANCOUVER, BC	604-689-0234	info@sandstormgold.com	www.sandstormgold.com
14 6	SEMENTIOU INC.	ROUYN-NORANDA, QC	819-279-9702	sylvaingauthier1@live.ca	www.sementiou.com
14 7	SIRIOS RESOURCES INC.	MONTREAL, QC	514-510-7961	ddoucet@sirios.com	www.sirios.com
14 8	SODIMEX TRADING LTD.	LAUSANNE, SWITZERLAND			
14 9	SOQUEM INC.	CHIBOUGAMAU, QC	418-748-7641	soquem.chibougama@soquem.qc.ca	www.soquem.qc.ca
15 0	SPHINX RESOURCES LTD. (formerly Donner Metals Ltd.)	VANCOUVER, BC	604-683-0564	info@sphinxresources.ca	www.sphinxresources.ca
15 1	STANDARD GRAPHITE CORP.	VANCOUVER, BC	604-683-2509	info@standardgraphite.com	www.standardgraphite.com
15 2	STELMINE CANADA LTD.	ST-COLOMBAN, QC	514-715-7387	info@stelmine.com	www.stelmine.com
15 3	STORNOWAY DIAMOND CORP.	LONGUEUIL, QC	450-616-5555	info@stornowaydiamond.com	www.stornowaydiamonds.com
15 4	STRATECO RESOURCES INC.	BOUCHERVILLE, QC	450-641-0775	info@strateco.com	www.stratecoinc.com
15 5	STRIA LITHIUM INC.	OTTAWA, ON	613-691-1091	geonomo@striacapital.com	www.striacapital.com
15 6	SULLIDEN MINING CAPITAL INC.	TORONTO, ON	416-861-5805	info@sulliden.com	www.sulliden.com
15 7	SUNSET COVE MINING INC.	MONTREAL, QC	514-380-6949	lwoods@sunsetcovemining.com	www.sunsetcovemining.com
15 8	TALISKER ARC EXPLORATION	STOUFFVILLE, ON			www.taliskerarcexploration.com
15 9	TAMARACK GOLD RESOURCES INC.	TORONTO, ON	416-303-6684	tamarackgold@rogers.com	www.tamarackgold.com



160	TARKU RESOURCES LTD. (formerly Eureka Exploration Inc.)	MONTREAL, QC	514-618-7287	info@eurekaexploration.com	www.eurekaexploration.com
161	TAWSHO MINING INC.	CONCORD, ON	905-760-7760	info@tawshominig.com	www.tawshominig.com
162	TECK RESOURCES LTD.	VANCOUVER, BC	604-699-4000	info@teck.com	www.teck.com
163	TECTONIC RESOURCES INC.	BEAUPORT, QC	418-977-7094	exploration@ressourcestectonic.com	www.ressourcestectonic.com
164	TELOS GEOSERVICES	ROUYN-NORANDA, QC			
165	TOMAGOLD CORP. (formerly Carbon2Green Corp.)	MONTREAL, QC	514-303-7895	info@tomagoldcorp.com	www.tomagoldcorp.com
166	TORINO POWER SOLUTIONS INC.	BURNABY, BC	604-808-2225	bryan.loree@gmail.com	www.cannabixtechnologies.com
167	TYPHOON EXPLORATION INC.	LAVAL, QC	450-622-4066	info@explorationtyphon.com	www.explorationtyphon.com
168	URANIUM VALLEY MINES LTD.	VAL-D'OR, QC	819-824-2808		www.uraniumvalleymines.com
169	URBANA CORPORATION	TORONTO, ON	416-595-9106	info@urbanacorp.com	www.urbanacorp.com
170	VANADIUMCORP RESOURCES INC. (formerly Pacific Ore Mining Corp.)	VANCOUVER, BC	604-385-4485	info@vanadiumcorp.com	www.vanadiumcorp.com
171	VANSTAR MINING RESOURCES INC.	LA PRAIRIE, QC	819-763-5096	info@vanstarminig.com	www.vanstarminig.com
172	VANTEX RESOURCES LTD.	LA PRAIRIE, QC	819-762-5035	info@vantexresources.com	www.vantexresources.com
173	VENDOME RESOURCES CORP.	BURLINGTON, ON	647-932-1604	info@vendomeresourcescorp.com	www.vendomeresourcescorp.com
174	VICTORY NICKEL INC.	TORONTO, ON	416-363-8527	info@victorynickel.ca	www.victorynickel.ca
175	VIKING GOLD EXPLORATION INC.	MARKHAM, ON	905-752-2008	info@vikinggold.ca	www.vikinggold.ca
176	VISIBLE GOLD MINES INC.	ROUYN-NORANDA, QC	819-762-0609	info@visiblegoldmines.com	www.visiblegoldmines.com



17 7	VORENUS METAL CORP.	VANCOUVER, BC			
17 8	WALLBRIDGE MINING COMPANY LTD.	LIVELY, ON	705-682-9297	info@wallbridgemin.com	www.wallbridgemin.com
17 9	WEMINDJI EXPLORATION INC. (WEMEX)	WEMINDJI, QC	819-978-0264		
18 0	WESTERN TROY CAPITAL RESOURCES INC.	TORONTO, ON	416-929-3268	loesby@westerntroty.com	www.westerntroty.com
18 1	XMET INC. (Duquesne-Ottoman Mines Inc.)	TORONTO, ON	416-644-6588	info@xmet.ca	www.xmet.ca
18 2	X-TERRA RESOURCES INC.	ROUYN-NORANDA, QC	819-762-4101	info@xterraresources.com	www.xterreresources.com
18 3	YORBEAU RESOURCES INC.	MONTREAL, QC	514-384-2202	griverin@yorbeauresources.com	www.yorbeauresources.com
18 4	ZIMTU CAPITAL CORP.	VANCOUVER, BC			
18 5	CREE MINERAL EXPLORATION BOARD	WEMINDJI & MISTISSINI, QC	819-978-0264 418-923-3461	larbiy@cmeb.org geomack@yahoo.com	www.cmeb.org



13. REFERENCES

ATKINS, W.M., 1988. – Geochemical soil sampling survey. Mountain Lake Project, Nemiscau area. Ministère des Ressources naturelles, GM 46904.

BENN, K., SAWYER, E.W., and BOUCHEZ, J.L., 1992, – Orogen parallel and transverse shearing in the Opatoca belt, Quebec: Implications for the structure of the Abitibi belt: Canadian Journal of Earth Sciences, v. 29, p. 2429-2444.

CARD, K.D., and CIESIELSKI, A., 1986, – Subdivisions of the Superior Province of the Canadian Shield: Geoscience Canada, v. 13, p. 5-13.

CHEVÉ, S., and BROUILLETTE, P., 1995, – Géologie et metallogenie de la partie nord-est de la Sous-Province d'Ashuanipi (Nouveau-Quebec), carte synthese, 23J, 23K, 23N et 23O.

DAVIS, W. J., MACHADO, N., GARIÉPY, C., SAWYER, E., and BENN, K., 1994, – U-Pb geochronology of the Opatoca tonalite-gneiss belt and its relationship to the Abitibi greenstone belt, Superior Province, Quebec: Canadian Journal of Earth Sciences, v. 32, p. 113-127.

DOUCET, P. MOOREHEAD, J., and COTÉ, S., 2003 – Southern Part of the Superior Province (Abitibi and Pontiac Subprovinces) in Report on mineral exploration activities in Québec 2002, Ministère des Ressources naturelles, Québec; DV 2003-02, pages 21-28.

FRANCONI, A., 1978, – La bande volcanosédimentaire de la rivière Eastmain inférieure. Rapport géologique final. Ministère des Richesses naturelles, Québec; DPV-574, 184 pages.

GOSELIN, C., 1996, – Synthèse géologique de la region do Frotet-Troilus: Ministère des Ressources Naturelles du Québec, ET-96-02, 21 p.

GOSELIN, C., and SIMARD, M., 2001, – Geology of the Lac Gayot Area (NTS 23M): Ministère des Ressources naturelles, Québec, RG 2000-03, 28 p.

GOUTIER, J., DION, C., OUELLETTE, M.C., DAVIS, D.W., DAVID, J., and PARENT, M., 2002, – Géologie de la région du lac Guyer (33G/05, 33G/06 ET 33G/11): Géologie Québec, RG 2001-15.

HOCQ, M., 1994 – La Province du Supérieur in Géologie du Québec, Ministère des Ressources naturelles, Québec, MM 94-01, pages 7-19.

HOULE, P., 2003 – James Bay Region, Central Part of the Superior Province (Opatoca, Opinaca, Nemiscau, and La Grande Subprovinces) in Report on mineral exploration activities in Québec 2002, Ministère des Ressources naturelles, Québec; DV 2003-02, pages 11-16.

LAPOINTE, B., and CHOWN, E.H., 1993, – Gold-bearing iron-formation in a granulite terrane of the Canadian Shield; a possible deep-level expression of an Archean gold-mineralizing system: Mineralium Deposita, v. 28, p. 191-197.



- LARBI, Y., and MacKINNON, M., 2016 – Eeyou Istchee Mineral Exploration Activities for 2016. Cree Mineral Exploration Board; 192 pages.
- LECLAIR, A., BERCLAZ, A., DAVID, J., and GROUP, F.N.W., 2004, The Northeastern Superior Province in Quebec's Far North: A Regional Synthesis, in Lithoprobe Report 86: Lithoprobe Secretariat, University of British Columbia.
- MOORHEAD, J., BEAUMIER, M., LEFEBVRE, D., BERNIER, L., and MARTEL, D., 1999 – Kimberlites, lineaments et rifts crustaux au Québec. Ministère des Ressources naturelles, Québec; MB 99-35, 50 pages.
- MORITZ, R.P., and CHEVÉ, S., 1992, – Fluid-inclusion studies of high-grade metamorphic rocks of the Ashuanipi Complex, eastern Superior Province; constraints on the retrograde P-T path and implications for gold metallogeny: Canadian Journal of Earth Sciences, v. 29, p. 2309-2327.
- MOUKHSIL, A., and DOUCET, P., 1999 – Géologie de la région des lacs Villages (feuillet SNRC 33B/03). Ministère des Ressources naturelles, Québec; RG 99-04, pages 6-12.
- MOUKHSIL, A., 2000 – Géologie de la région des lacs Pivert, Anatacau, Kauputauchechun et Wapamisk (feuillets SNRC 33C/01, 33C/02, 33c/07 et 33C/08). Ministère des Ressources naturelles, Québec; RG 2000-04, pages 7-18.
- MOUKHSIL, A., VOICU, G., DION, C., DAVID, J., DAVIS, D.W., and PARENT, M., 2001 – Géologie de la région DE LA Basse-Eastmain centrale (feuillets SNRC 33C/03, 33C/04, 33C/05 et 33C/06). Ministère des Ressources naturelles, Québec; RG 2001-08, pages 9-16.
- MOUKHSIL, A., and LEGAULT, M., 2002 – Géologie de la région de la Basse-Eastmain occidentale (feuillets SNRC 33D/01, 33D/02, 33D/07, 33D/08). Ministère des Ressources naturelles, Québec; RG 2002-09, pages 5-10.
- PERREAULT, S., and MOOREHEAD, J., 2003 – Northern Part of the Superior Province (Minto, Bienville, and Ashuanipi Subprovinces) in Report on mineral exploration activities in Québec 2002, Ministère des Ressources naturelles, Québec; DV 2003-02, pages 3-8.
- PERCIVAL, J.A., 1991, – Granulite-facies metamorphism and crustal magmatism in the Ashuanipi complex, Quebec-Labrador, Canada: Journal of Petrology, v. 32, p. 1261-1297.
- PERCIVAL, J.A., 2007 – Geology and metallogeny of the Superior Province, Canada, in Goodfellow, W.D., ed., Mineral Deposits of Canada: A Synthesis of Major Deposit-Types, District Metallogeny, the Evolution of Geological Provinces, and Exploration Methods: Geological Association of Canada, Mineral Deposits Division, Special Publication No. 5, p. 903-928.
- PERCIVAL, J.A., MORTENSEN, J. K., STERN, R. A., and CARD, K. D., 1992, – Giant granulite terranes of northeastern Superior Province: The Ashuanipi complex and Minto block: Canadian Journal of Earth Sciences, v. 29, p. 2287-2308.



PERCIVAL, J.A., STERN, R.A., and RAYNER, N., 2003, – Archean adakites from the Ashuanipi complex, eastern Superior Province, Canada: *Geochemistry, geochronology and tectonic significance: Contributions to Mineralogy and Petrology*, v. 145, p. 265-280.

PERCIVAL, J.A., and WEST, G.F., 1994 – The Kapuskasing Uplift: A geological and geophysical synthesis: *Canadian Journal of Earth Sciences*, v. 31, p. 1256-1286.

ROSCOE, S.M., and DONALDSON, J.A., 1988, – Uraniferous pyritic quartz pebble conglomerate and layered ultramafic intrusions in a sequence of quartzite, carbonate, iron formation and basalt of probable Archean age at Lac Sakami, Quebec: *Geological Survey of Canada, Paper 88-1C*, p. 117-121.

SAWYER, E.W., and BENN, K., 1993, – Structure of the high-grade Opatika Belt and adjacent low-grade Abitibi Subprovince, Canada: An Archean mountain front: *Journal of Structural Geology*, v. 15, p. 1443-1458.



ANNEX 1. LIST OF ACRONYMS AND ABBREVIATIONS

The following is a list of the acronyms and abbreviations used in this report.

Prospecting and geological surveys

- B Bulk sampling
- D(#h:m) Diamond drilling (number of holes : total meters drilled)
- Drc(#h:m) Reversed circulation drilling (number of holes: total meters)
- G Geological mapping
- LC Line cutting
- Min Mineralogical studies
- Pg Unspecified prospecting and geological study
- Pr Prospection
- Rsi Remote sensing interpretation
- S Sampling
- Sch Channel sampling
- T Trenching and stripping

Geochemical surveys

- G(b) Boulder geochemistry
- Gc Unspecified geochemical surveys
- Gc(e) Esker geochemical survey
- Gc(h) Humus geochemical survey
- Gc(lb) Lake bottom sediment geochemical survey
- Gc(r) Lithochemical survey (rock)
- Gc(s) Stream sediments geochemical survey
- Gc(sl) Soils geochemical survey
- Gc(t) Till geochemical survey

Geophysical surveys



AGp	Unspecified airborne geophysical survey
DPEM	Drill hole pulse electromagnetic survey (borehole)
EM	Electromagnetic survey
Gp	Unspecified ground geophysics
IP	Induced polarization survey
Mag	Magnetic survey
Mag-EM(A)	Airborne magnetic and electromagnetic survey
MAG-TDEM(A)	Airborne Magnetic – Time Domain Electromagnetic survey
PP	Pulse polarization survey
Rd	Radiometric survey
Sc	Scintillometric survey
VTEM(A)	Airborne VTEM survey

Other types of studies/work

DMS	Dense media separation
Met	Metallurgical studies
RE	Resource evaluation
TE	Technical evaluation
TR	Technical report

Other information

ACF	Active Channel Facies
Acq	Acquired property
CBF	Channel Bar Facies
CEAA	Canadian Environmental Assessment Agency
COA	Certificate of Authorization
COMEX	Environmental and Social Impact Review Committee
cph	Carats per hundred tonne



cps	Counts per second
EIA	Environmental Impact Assessment
ES	Environmental Study
ESIA	Environmental and Social Impact Assessment
eU	Equivalent uranium
FeT	Total iron
FS	Feasibility Study
g/t	Grams per tonne
Ga	Billions of years before the present
GCC/CNG	Grand Council of the Crees (Eeyou Istchee)/Cree Nation Government
IBA	Impacts and Benefits Agreement
JV	Joint venture
KIM	Kimberlite Indicator Minerals
Ma	Millions of years before the present
MDDELCC	Ministère du Développement durable, de l'Environnement et de la Lutte contre les changements climatiques
Mt	Million tons
PDA	Pre-Development Agreement
PEA	Preliminary Economic Assessment
PFS	Pre-Feasibility Study
ppb	Part per billion
ppm	Part per million
QFP	Quartz-feldspar-porphyry
SEPA	Socio-Economic Participation Agreement
SEPA*	Social Economic Partnership Agreement
tpd	Tonnes per day



TREO Total Rare Earth Oxides



ANNEX 2. COMPANY PRESS RELEASES USED IN THIS REPORT

PRESS RELEASE INFORMATION

FROM MINING EXPLORATION
COMPANIES WITH ACTIVE CLAIMS ON
EEYOU ISTCHEE



CONTENTS

1. OVERVIEW	
3	
1.1. History of Mineral Exploration in James Bay (Eeyou Istchee).....	
3	
1.2. Geology of Eeyou Istchee.....	
3	
1.3. Highlights	
6	
1.4. Number of projects by substance: Comparison of 2016 and 2017.....	
11	
2. OBJECTIVES.....	
13	
2.1. Objectives of the CMEB.....	
13	
2.2. Objectives of this report	
13	
11. WHAPMAGOOSTUI FIRST NATION TRAPLINES	
15	
11.1. Exploration activity and mineral resources potential	
15	
11.2. Highlights	
15	
11.3. Number of projects by substance.....	
15	
11.4. Mineral exploration activity on Whapmagoostui traplines (Not all companies do exploration work on their claims. Orange indicates that the active claims are on Category II Land.)	
17	
12. DIRECTORY OF MINING COMPANIES IN EEYOU ISTCHEE.....	
21	
13. REFERENCES	
33	
ANNEX 1. LIST OF ACRONYMS AND ABBREVIATIONS	
36	
ANNEX 2. COMPANY PRESS RELEASES USED IN THIS REPORT.....	
40	
EXPLORATION ACTIVITY CHISASIBI TRAPLINES	
43	



EXPLORATION ACTIVITY EASTMAIN TRAPLINES
44

EXPLORATION ACTIVITY MISTISSINI TRAPLINES
47

EXPLORATION ACTIVITY NEMASKA TRAPLINES
50

EXPLORATION ACTIVITY OUJE-BOUGOUMOU TRAPLINES
52

EXPLORATION ACTIVITY WASKAGANISH TRAPLINES
55

EXPLORATION ACTIVITY WASWANAPI TRAPLINES
57

EXPLORATION ACTIVITY WEMINDJI TRAPLINES
64

EXPLORATION ACTIVITY WHAPMAGOOSTUI TRAPLINES
68



EXPLORATION ACTIVITY CHISASIBI TRAPLINES

DATE	INFORMATION
2016	
November 15	HONEY BADGER EXPLORATION INC. announces results from the Heli-GT magnetic survey on the LG DIAMONDS project. (CH-24, CH-25, CH-27, CH-28, CH-39)
2017	
February 7	NOUVEAU MONDE MINING ENTERPRISES INC. changes its name to NOUVEAU MONDE GRAPHITE INC. (CH-36)
August 23	CANADA STRATEGIC METALS INC. undertakes a vast exploration program on its gold properties including the BLANCHE and CHARLES projects. (CH-39)

EXPLORATION ACTIVITY EASTMAIN TRAPLINES

DATE	INFORMATION
2016	
November 2	CRITICAL ELEMENTS CORP. initiates drilling on the Helico Sud discovery on the ROSE project. (RE-01)
November 3	DIOS EXPLORATION INC. delineates large-scale gold-silver-copper system on its K2 project. (VC-33)
November 16	DIOS EXPLORATION INC. obtains positive results on the Robino pipe on the AU33 project. (RE-01)
November 24	STELMINE CANADA LTD. joins Eleonore mining camp with the acquisition of the OPINACA gold project. (VC-35)
December 1	EASTMAIN RESOURCES INC. reports that drilling at the CLEARWATER project continues to confirm and extend mineralization. (VC-37)
2017	
January 4	EASTMAIN RESOURCES INC. reports that drilling continues to intersect high-grade gold at the CLEARWATER project. (VC-37)
February 7	EASTMAIN RESOURCES INC. reports that shallow underground drill results support mineral resource at the CLEARWATER project. (VC-37)
February 22	DIOS EXPLORATION INC. starts winter drilling program on the Heberto gold zone on the AU33 project. (RE-01)
March 6	EASTMAIN RESOURCES INC. intersects high grade schist veins returning up to 8.31 g/t Au over 13.3 m on the CLEARWATER project. (VC-37)
March 29	EASTMAIN RESOURCES INC. intercepts 14.1 g/t Au over 6.2 m at the CLEARWATER project. (VC-37)

April 12	DIOS EXPLORATION INC. successfully completes planned winter drilling on the Heberto discovery on the AU33 project. (RE-01)
April 26	EASTMAIN RESOURCES INC. intercepts 43.7 g/t Au over 2.0 metres; continues to expand high-grade schist zones on the CLEARWATER project. (VC-37)
May 16	EASTMAIN RESOURCES INC. drills 30.6 g/t Au over 4.9 m, including 254 g/t Au over 0.5 m at the CLEARWATER project. (VC-37)
June 1	EASTMAIN RESOURCES INC. drills 10.2 g/t gold over 8.5 m at the CLEARWATER project. (VC-37)
June 12	DIOS EXPLORATION INC. reports results of successful program and intersection of up to 10.3 grams gold per tonne on the Heberto gold discovery on the AU33 project. (RE-01)
July 13	EASTMAIN RESOURCES INC. completes the Eau Claire deposit definition drilling program on the CLEARWATER project. (VC-37)
July 27	EASTMAIN RESOURCES INC. drills multiple intercepts along HGS-02 vein at the CLEARWATER project including 7 g/t Au over 36 m and 15 g/t Au over 6 m. (VC-37)
August 2	CRITICAL ELEMENTS CORP. submits and Environmental Impact Study for its ROSE lithium-tantalum project. (RE-01)
August 3	DIOS EXPLORATION INC. starts follow-up on the CLARKIE project gold-bearing outcropping sediments. (VC-36)
August 10	DIOS EXPLORATION INC. starts summer campaign on its K2 project. (VC-33)
August 17	MIDLAND EXPLORATION INC. and ALTIUS MINERALS CORP. sample up to 1.07% nickel, 0.24% copper and 0.09% cobalt on the MORIA project. (VC-37)
August 23	CANADA STRATEGIC METALS INC. undertakes a vast exploration program on its gold properties including the ANNABELLE project. (RE-02, VC-33, VC-35)

August 30	DIOS EXPLORATION INC. drilling campaign planned on large-scale AU33 gold project targeting fold nose 8.5 km east of the Heberto gold discovery. (RE-01)
August 30	EASTMAIN RESOURCES INC. drilling at the Eau Claire gold deposit on the CLEARWATER project confirms and expands high-grade schist structures. (VC-37)
September 6	CRITICAL ELEMENTS CORP. announces a positive Feasibility Study for its ROSE project. (RE-01)
September 11	EASTMAIN RESOURCES INC. de-risks the Eau Claire deposit with measured and Indicated gold grade increasing 51% to 6.2 g/t at the CLEARWATER project. (VC-37)
September 26	MIDLAND EXPLORATION INC. and OSISKO MINING INC. discover a new high-grade copper bearing boulder field with up to 8.28% Cu. (VC-36)
October 13	DIOS EXPLORATION INC. reports a gold discovery on the CLARKIE project. (VC-36)
October 18	DIOS EXPLORATION INC. CLN gold showing on the AU33 project yielded up to 12.55 g/t Au. (RE-01)
October 20	CRITICAL ELEMENTS CORP. files the NI-43-101 Technical Report for the ROSE lithium-tantalum Feasibility Study. (RE-01)
October 26	EASTMAIN RESOURCES INC. files a technical report for the CLEARWATER project. (VC-37)

EXPLORATION ACTIVITY MISTISSINI TRAPLINES

DATE	INFORMATION
2016	
November 14	EASTMAIN RESOURCES INC. drills 219 g/t Au, 153 g/t Ag and 2.54% Cu over 2.0 m at the EASTMAIN MINE project. (M-16)
November 15	HONEY BADGER EXPLORATION INC. announces results from the Heli-GT magnetic survey on the LG DIAMONDS project. (M-03)
November 21	MAJESCOR RESOURCES INC. acquires an option for 131 mining claims near the Renard diamond mine and the Adamantin project – the KIMBERLITE-EXTENSION ROUTE 167 project. (M-11, M-24A)
December 12	EASTMAIN RESOURCES INC. trenches discover additional high-grade gold and copper mineralization at the EASTMAIN MINE project. (M-16)
December 15	HINTERLAND METALS INC. and BEAUFIELD RESOURCES INC. report lithium values at the TROILUS property. (M-40)
2017	
January 10	SPHINX RESOURCES LTD. recovers pristine gold grains in tills on the CHEMIN TROILUS project. (M-40)
January 19	EASTMAIN RESOURCES INC. confirms a discovery at the Julien target at the EASTMAIN MINE project. (M-16)
January 19	MAJESCOR RESOURCES INC. announces the acquisition of the LAPARRE diamond project. (M-17)
February 28	STELMINE CANADA LTD. acquires the JOUBERT property. (M-04, M-12)

March 14	AMEX EXPLORATION INC. signs deal with STELLAR AFRICAGOLD INC. to acquire their EASTMAIN NORTH and SOUTH properties. (M-16)
March 14	STELLAR AFRICAGOLD INC. sells the EASTMAIN RIVER claims to AMEX EXPLORATION INC. (M-16)
May 3	SPHINX RESOURCES LTD. provides an exploration update on the CHEMIN TROILUS project. (M-40)
May 11	SPHINX RESOURCES LTD. identifies drill targets on the CHEMIN TROILUS gold project. (M-40)
June 7	STELMINE CANADA LTD. acquires the TRIESTE property. (M-01A)
June 21	SULLIDEN MINING CAPITAL INC. enters into agreement with PITCHBLACK RESOURCES LTD. to sell its option to buy the TROILUS MINE gold project. (M-34, M-40)
June 21	PITCHBLACK RESOURCES LTD. enters into agreement with SULLIDEN MINING CAPITAL INC. to acquire the TROILUS MINE gold project. (M-34, M-40)
June 27	SPHINX RESOURCES LTD. begins drilling on the CHEMIN TROILUS gold project. (M-40)
July 27	AMEX EXPLORATION INC. reports that 2017 drilling confirms the gold potential of its EASTMAIN RIVER NORTH property. (M-16)
August 17	CRITICAL ELEMENTS CORP. and LEPIDICO LTD. intersect wide spodumene at the LEMARE lithium project. (M-25)
August 23	EASTMAIN RESOURCES INC. announces fall/winter drill program at the EASTMAIN MINE project. (M-16)
September 8	SULLIDEN MINING CAPITAL INC. provides update on the sale of TROILUS project to PITCHBLACK RESOURCES LTD. (M-34, M-40)
September 8	PITCHBLACK RESOURCES LTD. provides TROILUS gold project update. (M-34, M-40)



September 19	SPHINX RESOURCES LTD. provides an update on drilling and till sampling program at the CHEMIN TROILUS project. (M-40)
October 3	MIDLAND EXPLORATION INC. identifies new gold showings with grab samples yielding up to 22.6 g/t Au on the LASALLE property. (M-01A)

EXPLORATION ACTIVITY NEMASKA TRAPLINES

DATE	INFORMATION
2016	
November 24	CRITICAL ELEMENTS CORP. and PLATYPUS MINERALS LTD. report high-grade lithium drill results on the LEMARE project. (R-21)
November 28	NEMASKA LITHIUM INC. announces drill results from the Doris lithium discovery on the WHABOUCHI project. (R-18, R-20)
December 1	NEMASKA LITHIUM INC. increases mineral resources at the WHABOUCHI project. (R-18, R-20)
December 12	NEMASKA LITHIUM INC. provides progress report on the WHABOUCHI mine site and the Phase 1 Plant. (R-18, R-20)
2017	
January 17	NEMASKA LITHIUM INC. pursues drilling to further define the Doris Zone on the WHABOUCHI project. (R-18, R-20)
February 8	NEMASKA LITHIUM INC. successfully commissions the electrolysis cell at its Phase 1 plant in Shawinigan. (WHABOUCHI: R-18, R-20)
March 14	NEMASKA LITHIUM INC. produces up to 6.65% LiO ₂ concentrate from the DMS modular mill at the WHABOUCHI project. (R-18, R-20)
April 4	NEMASKA LITHIUM INC. provides update on lithium concentrate production at the WHABOUCHI project and Phase 1 plant commissioning. (R-18, R-20)
May 3	NEMASKA LITHIUM INC. provides update on the WHABOUCHI mine site and Phase 1 plant. (R-18, R-20)
August 1	NEMASKA LITHIUM INC. announces drill results from the Doris Zone and infill drilling at the WHABOUCHI project. (R-18, R-20)



August 17	CRITICAL ELEMENTS CORP. and LEPIDICO LTD. intersect wide spodumene at the LEMARE lithium project. (R-21)
October 10	NEMASKA LITHIUM INC. processes WHABOUCHI concentrate at the Phase plant and provides financing update. (R-11, R-20)



EXPLORATION ACTIVITY OUJE-BOUGOUMOU TRAPLINES

DATE	INFORMATION
2016	
November 3	VANSTAR MINING RESOURCES INC. announces that drilling resumes on the NELLIGAN project. (O-61)
November 14	QUINTO REAL CAPITAL CORP. reports results of exploration on the FANCAMP (O-60), GWILLIM (O-55) and EMBRY (O-58, O-60) projects.
November 22	CHIBOUGAMAU INDEPENDENT MINES INC. encounters high grade gold, zinc, and lead on surface at its BERRIGAN property. (O-55)
November 23	YORBEAU RESOURCES INC. continues extending the Gap lens at the SCOTT LAKE project. (O-58, O-59)
November 29	TOMAGOLD CORP. announces its strategic plan for 2016-17 for the OBALSKI project. (O-58)
December 6	GENESIS METALS CORP. announces assay results from resampling of the CHEVRIER gold project. (O-60)
December 12	GENESIS METALS CORP. announces further assay results from resampling of the CHEVRIER gold project. (O-60)
December 19	VANSTAR MINING RESOURCES INC. and IAMGOLD CORP. complete the autumn 2016 drilling campaign on the NELLIGAN project. (O-61 and Waswanipi W-23A)
2017	
January 18	CHIBOUGAMAU INDEPENDENT MINES INC. intersects copper and gold on the BATEMAN MINE property. (O-57/M-57)
January 19	GENESIS METALS CORP. commences geological modeling at the CHEVRIER project. (O-60)
January 23	TOMAGOLD CORP. starts drilling on its OBALSKI property. (O-58)

February 1	CHIBOUGAMAU INDEPENDENT MINES INC. intersects zinc, gold and silver at the BERRIGAN property. (O-55)
February 2	GENESIS METALS CORP. consolidates land position at the CHEVRIER project. (O-60)
February 7	YORBEAU RESOURCES INC. completed last drill hole at the SCOTT LAKE project. (O-58, O-59)
February 14	YORBEAU RESOURCES INC. releases mineral resource estimate at its SCOTT LAKE project. (O-58, O-59)
February 15	NORTHERN SUPERIOR RESOURCES INC. initiates core drilling program on the CROTEAU EST property. (O-55)
March 14	VANSTAR MINING RESOURCES INC. and IAMGOLD CORP. announce 11.69 metres at 3.19 g/t gold and confirm the occurrence of an extensive auriferous hydrothermal system in the north sector on the NELLIGAN project. (O-61 and Waswanipi W-23A)
March 16	TOMAGOLD CORP. intersects 15.0 g/t Au, 46.8 g/t Ag and 10.4% Cu over 2 metres on its OBALSKI property. (O-58)
March 23	GENESIS METALS CORP. identifies new gold targets at the CHEVRIER project. (O-60)
March 23	VANSTAR MINING RESOURCES INC. and IAMGOLD CORP. get a second drill rig on the NELLIGAN project. (O-61 and Waswanipi W-23A)
March 30	YORBEAU RESOURCES INC. files technical report on updated resource estimate for the SCOTT LAKE deposit. (O-58, O-59)
May 11	VANSTAR MINING RESOURCES INC. and IAMGOLD CORP. intersect visible gold on the NELLIGAN project. (O-61 and Waswanipi W-23A)
May 17	GENESIS METALS CORP. provides exploration update on the CHEVRIER project. (O-60)
June 1	VANSTAR MINING RESOURCES INC. and IAMGOLD CORP. drill intersection of 3.23 g/t Au over 7.99 metres on the NELLIGAN project. (O-61 and Waswanipi W-23A)



June 22	GENESIS METALS CORP. commences trenching at the CHEVRIER project. (O-60)
July 11	GENESIS METALS CORP. commences a 10,000 metre drill program at the CHEVRIER project. (O-60)
July 12	TYPHOON EXPLORATION INC. reports that the MONEXCO project is along strike with the Northern Superior Croteau Est project. (O-57/M-57)
July 18	TYPHOON EXPLORATION INC. samples up to 81.8 g/t gold at the MONEXCO project. (O-57/M-57)
August 30	GENESIS METALS CORP. completes trenching and Phase 1 drill programs. (O-60)
September 5	VANSTAR MINING RESOURCES INC. and IAMGOLD CORP. unveil a large auriferous hydrothermal system on the NELLIGAN project. (O-61 and Waswanipi W-23A)
September 6	CHIBOUGAMAU INDEPENDENT MINES INC. receives first assays from surface showings at the BERRIGAN (O-55) and the NEPTON (O-57/M-57) properties.
October 2	CHIBOUGAMAU INDEPENDENT MINES INC. channel sampling returns up to 19.71 g/t Au, 289.2 g/t Ag, 16.79 % Zn and 17.75% Pb on the BERRIGAN property. (O-55)

EXPLORATION ACTIVITY WASKAGANISH TRAPLINES

DATE	INFORMATION
2016	
November 17	STRIA LITHIUM INC. announces significant recovery of critical metal tantalum from the PONTAX lithium project. (R-08)
November 22	BALMORAL RESOURCES LTD. intersects 6.43 metres grading 4.36 g/t gold at Bug Lake on the MARTINIERE project. (A-04)
December 12	BALMORAL RESOURCES LTD. intersects 78.15 metres grading 1.65 g/t gold, including 17.00 metres grading 4.50 g/t gold, as the Bug South deposit continues to expand on the MARTINIERE property. (A-04)
2017	
January 11	BALMORAL RESOURCES LTD. intersects new, shallow high grade gold discovery; 5.80 metres grading 10.51 g/t gold on the MARTINIERE project. (A-04)
January 19	MAJESCOR RESOURCES INC. announces the acquisition of the MIRABELLI gold project. (R-01A, R-08, R-09)
January 23	BALMORAL RESOURCES LTD. intersects 41.95 metres grading 3.24 g/t gold including 11.58 metres grading 6.30 g/t gold on the Bug South deposit on the MARTINIERE property. (A-04)
January 26	MAJESCOR RESOURCES INC. announces the acquisition of additional ground on the MIRABELLI project. (R-01A, R-08, R-09)
February 2	BALMORAL RESOURCES LTD. intersects 11.66 metres grading 6.25 g/t gold, including 5.47 metres grading 12.48 g/t gold on the MARTINIERE project. (A-04)
February 7	NOUVEAU MONDE MINING ENTERPRISES INC. changes its name to NOUVEAU MONDE GRAPHITE INC. (A-04)



February 9	BALMORAL RESOURCES LTD. commences 25,000 metre drill program focused on expanding the Bug Lake gold deposits on the MARTINIÈRE property. (A-04)
February 15	BALMORAL RESOURCES LTD. extends the bug Lake gold deposit to 350 metres vertical depth on the MARTINIÈRE project. (A-04)
March 1	MIDLAND EXPLORATION INC. and SOQUEM INC. resume drilling on the CASAULT property. (A-04)
June 16	BOLD VENTURES INC. provides update on the LAC GRASSET project. (N-08)
September 21	MIDLAND EXPLORATION INC. and SOQUEM INC. identify a new gold zone near the Sunday Lake Fault on the CASAULT project and resume drilling. (A-04)

EXPLORATION ACTIVITY WASWANUPI TRAPLINES

DATE	INFORMATION
2016	
November 2	BEAUFIELD RESOURCES INC. begins drill program on the Rouleau Gold Zone on the URBAN property. (W-25A, W-25B, 19)
November 3	VANSTAR MINING RESOURCES INC. announces that drilling resumes on the NELLIGAN project. (W-23A)
November 8	OSISKO MINING INC. intersects 6.1 g/t Au over 35.4 metres at the WINDFALL LAKE project. (W-25A, W-25B)
November 14	GFK RESOURCES INC. finds gold grades up to 18.0 g/t over 0.9 m and 6.2 g/t over 1.4 m on the GRIZZLY property. (W-21)
November 16	METANOR RESOURCES INC. intersects 13.1 g/t gold over 3.8 metres at the BACHELOR MINE project. (W-21, W-24A)
November 17	GLOBEX MINING ENTERPRISES INC. options the MONTALEMBERT project to NATAN RESOURCES LTD. (W-15)
November 23	OSISKO MINING INC. intersects 27.6 g/t gold over 3.1 metres at the Fox discovery on the WINDFALL LAKE project. (W-25A, W-25B)
November 29	TOMAGOLD CORP. announces its strategic plan for 2016-17 for the HAZEUR and MONSTER LAKE projects. (W-23A)
December 1	BEAUFIELD RESOURCES INC. drills the Rouleau gold zone on the URBAN property. (W-25B)
December 5	OSISKO MINING INC. intersects 65 g/t gold over 5.7 m at the WINDFALL LAKE extension. (W-25A, W-25B)
December 6	OSISKO MINING INC. intersects 6.14 g/t gold over 14.4 metres at the BLACK DOG project. (W-25A)
December 19	OSISKO MINING INC. increases drill program at the WINDFALL LAKE project by 250,000 metres. (W-25A, W-25B)

December 19	VANSTAR MINING RESOURCES INC. and IAMGOLD CORP. complete the autumn 2016 drilling campaign on the NELLIGAN project. (W-23A and Ouje-Bougoumou O-61)
2017	
January 5	OSISKO MINING INC. intersects 47 g/t Au over 2.6 metres at the WINDFALL LAKE project. (W-25A, W-25B)
January 6	BEAUFIELD RESOURCES INC. prioritizes the URBAN-WINDFALL district exploration. (W-25A, W-25B, 19)
January 11	OSISKO MINING INC. intersects 42.7 g/t Au over 9.0 metres at the WINDFALL LAKE project. (W-25A, W-25B)
January 12	METANOR RESOURCES INC. intersects 8.6 g/t Au over 13.9 metres at the BACHELOR MINE project. (W-21, W-24A)
January 12	BEAUFIELD RESOURCES INC. intersects 5.9 g/t Au over 4 metres at the URBAN project. (W-25A, W-25B, 19)
January 17	TOMAGOLD CORP. announces the IAMGOLD CORP. drilling plans for the MONSTER LAKE project. (W-23A)
January 18	OSISKO MINING INC. expands the BLACK DOG discovery. (19)
January 20	NATAN RESOURCES LTD. and GLOBEX MINING ENTERPRISES INC. report channel samples assay up to 438.23 g/t gold. (W-15)
January 23	OSISKO MINING INC. intersects 12.7 g/t Au over 5.4 metres at the WINDFALL LAKE project. (W-25A, W-25B)
January 23	BOLD VENTURES INC. and NORTHERN SUPERIOR RESOURCES INC. mobilize drill to Black Phoenix at the LAC SURPRISE project. (W-23A, W-26)
January 25	BEAUFIELD RESOURCES INC. drilling resumes at the URBAN project. (W-25A, W-25B, 19)
January 26	VANSTAR MINING RESOURCES INC. and IAMGOLD CORP. start a new drilling program of 6,000 metres on the NELLIGAN project. (W-23A)

February 2	METANOR RESOURCES INC. intersects 9.6 g/t gold over 7.6 metres at the BACHELOR MINE project. (W-21, W-24A)
February 3	OSISKO MINING INC. commences drilling on the 1400 metre step out at the WINDFALL LAKE project. (W-25A, W-25B)
February 8	BEAUFIELD RESOURCES INC. to increase drilling at the URBAN project. (W-25A, W-25B, 19)
February 14	OSISKO MINING INC. intersects 9.76 g/t gold over 7.3 metres at the WINDFALL LAKE project. (W-25A, W-25B)
February 15	OSISKO MINING INC. intersects 64.3 g/t gold over 2.3 metres at the WINDFALL LAKE project. (W-25A, W-25B)
March 6	OSISKO MINING INC. announces major land acquisition in the Lebel-sur-Quévillon area. (W-24, W-24B, W-24C)
March 8	METANOR RESOURCES INC. discovers a sub-vertical shear zone east of the BARRY PIT near surface and confirms extension of the west zone in the Barry pit. (W-25A, W-25B, 19)
March 9	BOLD VENTURES INC. and NORTHERN SUPERIOR RESOURCES INC. intersect a gold-bearing zone at the Black Phoenix area in the LAC SURPRISE property. (W-23A, W-26)
March 14	VANSTAR MINING RESOURCES INC. and IAMGOLD CORP. announce 11.69 metres at 3.19 g/t gold and confirm the occurrence of an extensive auriferous hydrothermal system in the north sector on the NELLIGAN project. (W-23A, and Ouje-Bougoumou O-61)
March 22	OSISKO MINING INC. intersects 15.6 g/t gold over 5.8 metres at the WINDFALL LAKE project. (W-25A, W-25B)
March 27	OSISKO MINING INC. obtains transfer of the WINDFALL LAKE project. (W-25A, W-25B)
March 28	OSISKO MINING INC. intersects 71.4 g/t gold over 5.4 metres at the WINDFALL LAKE project. (W-25A, W-25B)
April 4	OSISKO MINING INC. intersects 8.37 g/t gold over 2.8 metres at the Fox Zone on the WINDFALL LAKE project. (W-25A, W-25B)

April 5	OSISKO MINING INC. intersects 63.8 g/t gold over 4.4 metres at the Lynx Zone on the WINDFALL LAKE project. (W-25A, W-25B)
April 6	CARTIER RESOURCES INC. advances on the BENOIST (W-24A, W-24B) and FENTON (W-21B, W-27) projects.
April 6	OSISKO MINING INC. intersects 34.1 g/t Au over 4.0 metres at the WINDFALL LAKE project. (W-25A, W-25B)
April 10	BEAUFIELD RESOURCES INC. provides drill results from Rouleau on the URBAN properties. (W-25A, W-25B, 19)
April 11	OSISKO MINING INC. intersects 19.4 g/t Au over 7.9 metres at the WINDFALL LAKE project. (W-25A, W-25B)
April 25	OSISKO MINING INC. intersects 35.2 g/t Au over 2.8 metres at the WINDFALL LAKE project. (W-25A, W-25B)
May 3	OSISKO MINING INC. intersects 936 g/t Au over 2.5 metres at the WINDFALL LAKE project. (W-25A, W-25B)
May 3	GOLDSTAR MINERALS INC. acquires the ASSINICA gold property. (W-11, W-11A)
May 10	OSISKO MINING INC. intersects 11.7 g/t Au over 7.7 metres in new Lynx 4 discovery on the WINDFALL LAKE project. (W-25A, W-25B)
May 11	VANSTAR MINING RESOURCES INC. intersects visible gold on the NELLIGAN project. (W-23A and Ouje-Bougoumou O-61)
May 11	TOMAGOLD CORP. and QUINTO REAL CAPITAL CORP. report that IAMGOLD CORP. intersected 121.67 g/t gold over 3.1 metres at the MONSTER LAKE project. (W-23A)
May 19	OSISKO MINING INC. intersects 9.01 g/t Au over 9.4 metres at the WINDFALL LAKE project. (W-25A, W-25B)
May 23	BEAUFIELD RESOURCES INC. reports drilling results and announces 10,000 metres drilling program on its URBAN property. (W-25A, W-25B, 19)

May 24	BEAUFIELD RESOURCES INC. acquires 100% interest in the WINDFALL EAST gold project from ALTO VENTURES LTD. (W-25B)
May 24	GLOBEX MINING ENTERPRISES INC. starts work on the high grade gold MONTALEMBERT property. (W-15)
May 24	OSISKO MINING INC. intersects 42.4 g/t gold over 4.7 metres at the WINDFALL LAKE project. (W-25A, W-25B)
May 30	OSISKO MINING INC. intersects 97.4 g/t gold over 8.4 metres at the WINDFALL LAKE project. (W-25A, W-25B)
June 1	VANSTAR MINING RESOURCES INC. and IAMGOLD CORP. drill intersection of 3.23 g/t Au over 7.99 metres on the NELLIGAN project. (W-23A and Ouje-Bougoumou O-61)
June 7	OSISKO MINING INC. intersects 12.5 g/t Au over 8.5 metres at the WINDFALL LAKE property. (W-25A, W-25B)
June 7	BEAUFIELD RESOURCES INC. closes acquisition of the WINDFALL EAST project. (W-25B)
June 8	METANOR RESOURCES INC. drills new high grade zones at the BARRY project. (W-25, W-25B, 19)
June 9	BEAUFIELD RESOURCES INC. starts drilling and an airborne survey underway at the URBAN project. (W-25A, W-25B, 19)
June 16	BOLD VENTURES INC. terminates its option agreement with NORTHERN SUPERIOR RESOURCES INC. on the LAC SURPRISE project. (W-23A, W-26)
June 16	NORTHERN SUPERIOR RESOURCES INC. informed of BOLD VENTURES INC. intentions on the LAC SURPRISE project. (W-23A, W-26)
July 5	GLOBEX MINING ENTERPRISES INC. reports that ENFORCER GOLD CORP. starts drilling on the MONTALEMBERT property. (W-15)
July 6	TOMAGOLD CORP. and IAMGOLD CORP. report further high grade results on the MONSTER LAKE gold project. (W-23A)

July 12	OSISKO MINING INC. intersects 131 g/t Au over 2 metres at the Lynx deposit on the WINDFALL LAKE project. (W-25A, W-25B)
July 19	OSISKO MINING INC. intersects 24.9 g/t Au over 31 metres at the WINDFALL LAKE project. (W-25A, W-25B)
July 26	ENFORCER GOLD CORP. and GLOBEX MINING ENTERPRISES INC. report that a channel sample returned 3,310 g/t gold. (W-15)
July 28	GFK RESOURCES INC. changes its name to OPUS ONE RESOURCES INC. (W-21)
July 31	BEAUFIELD RESOURCES INC. accelerates drilling at the URBAN project with the addition of a second drill. (W-25A, W-25B, 19)
August 1	OSISKO MINING INC. intersects 63.2 g/t Au over 7.7 metres at the WINDFALL LAKE project. (W-25A, W-25B)
August 9	OSISKO MINING INC. intersects 379 g/t Au over 2.0 metres at the WINDFALL LAKE project. (W-25A, W-25B)
August 14	OSISKO MINING INC. intersects 53.5 g/t gold over 3.0 metres at the WINDFALL LAKE project. (W-25A, W-25B)
August 24	OSISKO MINING INC. intersects 36.7 g/t Au over 4.0 metres at the WINDFALL LAKE project. (W-25A, W-25B)
August 28	METANOR RESOURCES INC. intersects 7.1 g/t gold over 8.2 metres at the BARRY project. (W-25A, W-25B, 19)
September 5	VANSTAR MINING RESOURCES INC. and IAMGOLD CORP. unveil a large auriferous hydrothermal system on the NELLIGAN project. (W-23A and Ouje-Bougoumou O-61)
September 18	BEAUFIELD RESOURCES INC. drilling returns 33.6 g/t gold over 1.0 metre and acquires new key claims for its URBAN property. (W-25A, W-25B, 19)
September 18	OSISKO MINING INC. intersects 36 g/t gold over 6.9 metres at the Lynx deposit on the WINDFALL LAKE project. (W-25A, W-25B)

September 19	GOLDEN VALLEY MINES LTD. provides exploration update on the LAC BARRY GOLD project. (W-24B, W-25A)
September 20	OSISKO MINING INC. intersects 611 g/t gold over 2.0 metres at the WINDFALL LAKE project. (W-25A, W-25B)
October 3	OSISKO MINING INC. intersects 27 g/t Au over 2.7 metres at the Lynx deposit on the WINDFALL LAKE project. (W-25A, W-25B)
October 4	OPUS ONE RESOURCES INC. provides an update of its ongoing field work program on the FECTEAU (W-23A), GRIZZLY (W-21) and WINWIN (W-23B) projects.
October 12	OSISKO MINING INC. intersects 61.8 g/t Au over 2.5 metres. (W-25A, W-25B)
October 16	METANOR RESOURCES INC. extends existing shear zone down to 400 metres to the east, 27.8 g/t gold over 3 metres at the BARRY project. (W-25A, W-25B, 19)
October 16	BEAUFIELD RESOURCES INC. completes summer drilling at the URBAN project, reports drill results. (W-25A, W-25B, 19)
October 18	OSISKO MINING INC. intersects 31.4 g/t Au over 6.0 metres at the WINDFALL LAKE project. (W-25A, W-25B)
October 25	OSISKO MINING INC. intersects 39.4 g/t gold over 2.4 metres at the WINDFALL LAKE project. (W-25A, W-25B)
October 27	OSISKO MINING INC. completes first blast at the WINDFALL LAKE project exploration ramp. (W-25A, W-25B)
October 30	OSISKO MINING INC. intersects 20.5 g/t gold over 11.6 metres at the lynx deposit on the WINDFALL LAKE project. (W-25A, W-25B)

EXPLORATION ACTIVITY WEMINDJI TRAPLINES

DATE	INFORMATION
2016	
November 2	SIRIOS RESOURCES INC. restarts drilling on the CHEECHOO project and discovers visible gold. (VC-29)
November 3	EASTMAIN RESOURCES INC., AZIMUT EXPLORATION INC. and OPINACA MINES LTD. report initial drilling and channel sampling results for the ELEONORE SOUTH project. (VC-29)
November 3	SPHINX RESOURCES LTD. and SIRIOS RESOURCES INC. announce the completion of the fall 2016 till sampling program on the CHEECHOO-ELEONORE TREND project. (VC-29)
November 21	EASTMAIN RESOURCES INC., AZIMUT EXPLORATION INC. and OPINACA MINES LTD. report the completion of Phase 1 drilling program at the ELEONORE SOUTH project. (VC-29)
November 29	SIRIOS RESOURCES INC. drilling extends gold zones and intersects high grades at the CHEECHOO project. (VC-29)
2017	
January 17	SIRIOS RESOURCES INC.: 26.1 metres at 6.2 g/t gold intersected in drilling at the CHEECHOO project. (VC-29)
January 23	EVERTON RESOURCES INC. announces that HECLA MINING COMPANY will perform a \$925,000 exploration program, including 2,500 metres of drilling, on the OPINACA B property. (VC-28, VC-29)
February 7	SIRIOS RESOURCES INC. discovers new high-grade gold zones at the CHEECHOO project. (VC-29)
February 14	CANADA STRATEGIC METALS INC. exercises its option to acquire an additional 20% of the SAKAMI gold project. VC-20, VC-21)

February 14	MATAMEC EXPLORATION INC. announces that CANADA STRATEGIC METALS INC. has exercised the option to acquire an additional 20% interest in the SAKAMI property. (VC-20, VC-21)
February 21	SIRIOS RESOURCES INC. announces that winter drilling is under way at the CHEECHOO project. (VC-29)
February 28	SIRIOS RESOURCES INC. announces surface sampling results of the CHEECHOO project. (VC-29)
March 1	EASTMAIN RESOURCES INC., AZIMUT EXPLORATION INC. and OPINACA MINES LTD. begin drilling Phase 2 at the ELEONORE SOUTH property. (VC-29)
March 6	SIRIOS RESOURCES INC. intersects 11.9 g/t Au over 13.5 metres in drilling on the CHEECHOO project. (VC-29)
March 28	CANADA STRATEGIC METALS INC. and MATAMEC EXPLORATIONS INC. announce commencement of new drilling program on the SAKAMI gold property. (VC-20, VC-21)
April 6	GENIUS PROPERTIES LTD. announces proposed acquisition of the SAKAMI property. (VC-20)
May 2	EASTMAIN RESOURCES INC., AZIMUT EXPLORATION INC. and OPINACA MINES LTD. intersect 4.9 g/t Au over 45 metres at the ELEONORE SOUTH property. (VC-29)
May 3	SPHINX RESOURCES LTD. and SIRIOS RESOURCES INC. provide an exploration update on the CHEECHOO-ELEONORE TREND project. (VC-29)
May 9	SIRIOS RESOURCES INC. intersects 10.6 metres at 11.2 g/t gold in the western area of the CHEECHOO project. (VC-29)
May 30	EASTMAIN RESOURCES INC. AZIMUT EXPLORATION INC. and OPINACA MINES LTD. intersect 6.61 g/t gold over 3.0 metres at the ELEONORE SOUTH JV. (VC-29)
May 30	SIRIOS RESOURCES INC. discovers a new gold zone at depth in meta-sediments on the CHEECHOO project. (VC-29)

June 1	SIRIOS RESOURCES INC. and SPHINX RESOURCES LTD. discover four gold anomalies on the CHEECHOO-ELEONORE TREND project. (VC-29)
June 19	CANADA STRATEGIC METALS INC. and MATAMEC EXPLORATIONS INC. intersect 1.70 g/t gold over 30 metres including 4.26 g/t gold over 4.5 metres, extending the strike length of Zone 25 to 700 metres on the SAKAMI property. (VC-20, VC-21)
August 9	EASTMAIN RESOURCES INC. AZIMUT EXPLORATION INC. and OPINACA MINES LTD. begin an 8,000 metre drilling program at the ELEONORE SOUTH JV. (VC-29)
August 23	CANADA STRATEGIC METALS INC. undertakes a vast exploration program on its gold properties including the BLANCHE project (VC-26) and the APPLE project (VC-20, VC-21).
September 7	SIRIOS RESOURCES INC. reports latest drilling results from the CHEECHOO project. (VC-29)
September 21	SPHINX RESOURCES LTD. and SIRIOS RESOURCES INC. focus on two high priority gold targets on the CHEECHOO-ELEONORE TREND project. (VC-29)
October 3	SIRIOS RESOURCES INC. obtains 23.5 g/t Au over 3.1 metres at surface on the CHEECHOO project. (VC-29)
October 11	GENIUS PROPERTIES LTD. announces filing of Technical Report on its SAKAMI property. (VC-20)
October 11	HARFANG EXPLORATION INC. enhances its property portfolio by acquiring the SERPENT property. (VC-17, VC-21)
October 12	MIDLAND EXPLORATION INC. and ALTIUS MINERALS CORP. discover new gold showings on the ELROND project. (VC-18, VC-21)



October 17	EASTMAIN RESOURCES INC., AZIMUT EXPLORATION INC. and OPINACA MINES LTD. announce discovery of surface high-grade gold at the ELEONORE SOUTH property. (VC-29)
------------	---



EXPLORATION ACTIVITY WHAPMAGOOSTUI TRAPLINES

DATE	INFORMATION
2017	
February 7	NOUVEAU MONDE MINING ENTERPRISES INC. changes its name to NOUVEAU MONDE GRAPHITE INC. (GW-21)